

Contents

المحتويات

Immunization Coverage (%) Among Infants and Children (1 - 6 years) 2003 - 2007	Table 7.1, page 3	2007 - 2003 (6 -1)	
Percentage of Immunized Persons (all ages) by Type of Immunization and Place 2007	Table 7.2, page 4	2007	()
Immunization Coverage among Children (2 Years) by Registered Live Births at Health Centers and Nationality 2007	Table 7.3, page 5		2007
Immunization Coverage Among Children (1 - 6 Years) and Pregnant Women by Registered Live Births in Health Centers and Nationality 2007	Table 7.4, page 6		(6 - 1) 2007
Positive Tuberculin Test Rates more than 10mm for Children at School Entry (6 - 7 years) 1998 - 2007	Figure 7.1, page 7	2007 – 1998 (7 - 6)	10mm
Number of New Cases with Fasting Blood Sugar more than 7.8 mmol/L by Nationality, Age Groups and Sex 2007	Table 7.5, page 8	2007	(7.8mmol/L)
Number of New Cases Tested for Cholesterol, Level more than 6.2 mmol/L by Nationality, Age Groups and Sex 2007	Table 7.6, page 8		(6.2 mmol/L) 2007
Incidences of Notifiable Communicable Diseases 2003 - 2007	Table 7.7, page 9		2007 - 2003
Incidences Rates Per 100,000 Population of Notifiable Communicable Diseases 2003 - 2007	Table 7.8, page 10	2007 - 2003	100,000
Annual Distribution of Viral Hepatitis Incidences by Nationality, Age Groups and Sex 2007	Table 7.9, page 11	2007	
Annual Distribution of Viral Hepatitis Incidences by Governorate, Nationality and Sex 2007	Table 7.10, page 12	2007	
Hepatitis "B" Carriers by Age Groups, Nationality and Sex 2007	Table 7.11, page 13	2007	" "
Hepatitis "B" Carriers by Geographical Region, Nationality and Sex 2007	Table 7.12, page 13	2007	" "
Selected Communicable Diseases Incidences & Rates Per 100,000 Population by Age Groups 2007	Table 7.13, page 14	2007	100,000
Selected Communicable Diseases Incidences Rates Per 100,000 Population by Age Groups 2007	Figure 7.2, page 15	2007	100,000
Report Numbers, Percentages and Rates by 100,000 Population of Tuberculosis by Nationality and Age Groups 2007	Table 7.14, page 16	2007	100,000
Water Supply Bacteriological and Chemical Test Results by Source 2003 - 2007	Table 7.16, page 18		2007 - 2003
Examined and Positive Breeding Spots of Mosquito by Governorate 2004 - 2007	Table 7.17, page 19		2007 - 2004
Malaria Cases by Country of Origin 2007	Table 7.18, page 20		2007
Selected Serological Test Results 2006 - 2007	Table 7.19, page 21		2007 - 2006
Number and Rates per 1000 population of Road and Traffic Related Accidents by Seriousness of Injuries and Sex 2003 - 2007	Table 7.20, page 22		1000 2007 - 2003

7 – Public Health ... (cont'd)

7 – الصحة العامة ... (تابع)

Road & Traffic Related Accidents Rates Per 1000 Population by Seriousness of Injuries 2003 - 2007	Figure 7.3, page 23	2007 - 2003	1000
Number of Road and Traffic Related Accidents by Seriousness of Injuries and Age Groups 2007	Table 7.21, page 24	2007	
Injury Accidents by Main Causes and Seriousness of Injury 2007	Table 7.22, page 25	2007	
Injury Accidents by Region and Seriousness of Injury 2007	Table 7.23, page 26	2007	
Number of Road and Traffic Related Accidents by Seriousness of Injuries and Governorate 2007	Table 7.24, page 27	2007	
Number and Rates of Occupational Injuries and Deaths Per 1000 Insured Persons by Nationality, Division of Economic Activity and 2007	Table 7.25, page 28		1000
Occupational Injuries & Deaths Rates Per 1000 Insured Persons by Nationality & Division of Economic Activity 2007	Table 7.26, page 29	2007	1000
Top Occupational Accidents Rates Per 1000 Insured Persons 2003 - 2007	Figure 7.4, page 30	2007 - 2003	1000

Conventions

Dair Health Center officially re-opened and re-named to National Bank of Bahrain Health Center – Dair in 2007.

Zallaq Clinic upgraded to Zallaq Health Center effective from 2007 and now providing all primary health care services.

Tables 7.3 & 7.4

New vaccines introduced in 2006 as follows:-

- 1st dose of Diphtheria, Pertussis, Tetanus (DPT) is given at age of two months.
- 1st dose of Hepatitis A (HAV 1) is given at age of one year.
- 2nd dose of Hepatitis A (HAV 2) is given at age of two years.
- Meningococcal (MENINGO) is given at age of two years.

The calculation of the coverage was based on total Bahraini and Non-Bahraini of targeted age of each vaccine as per the immunization schedule recommended by World Health Organization.

Percentage Coverage of TT will normally be decreased by time as most of the pregnant women were immuned at childhood or school vaccination program.

Percentage Coverage for child immuned at birth by Tetanus vaccination against Tetanus Neonatorum will normally be increased by the number of newborns protected at birth against Tetanus from their mother who received 2 doses or more of Tetanus any time in her life.

Meningococcal: The data is collected as total and not by nationality.

الإصطلاحات

2007

-

2007

7.4 & 7.3

-: 2006

()

()

()

-
-
-
-

Table 7.1
2007 - 2003 (6-1)
Immunization Coverage (%) Among Infants and Children (1-6 years) 2003 - 2007

<i>Vaccine</i>	<i>2007</i>	<i>2006</i>	<i>2005</i>	<i>2004</i>	<i>2003</i>	
Infant < 1 Year						1 >
Third dose of DPT (Diphtheria, Tetanus, Pertussis)	96.7	98.4	98.2	97.7	97.3	()
Third dose of OPV (Oral Polio)	96.7	98.4	98.1	97.7	97.3	
Third dose of Hepatitis B (HB)	96.7	98.4	98	98	98	()
Third dose of Haemophilus Influenza B (Hib)	96.7	98.4	98.2	97.8	97.2	()
BCG (Bacille Calmette-Guerin) (Non-Bahraini) *	87.0	83.2	89.3	NA	NA	* () ()
Children of age 1 Year						1
MMR1 (Mumps, Measles, Rubella - dose 1)	100	100	100	98.8	100	()
Children of age 6 Years						6
MMR2 (Mumps, Measles, Rubella - dose 2)	100	99	99	100	99.5	()

* BCG vaccine is given only for infant of non-Bahraini mothers from endemic countries.

() *

Table 7.2
2007 ()
Percentage of Immunized Persons (all ages) by Type of Immunization and Place 2007

<i>Type of Immunization</i>	<i>Total</i>	<i>Private Hospitals & Clinics</i>	<i>Military Hospital</i>	<i>Schools</i>	¹ <i>Sh.Sabah H.C. ¹</i>	<i>Health Centres</i>	<i>Public Health Directorate</i>	
DPT (Diphtheria, Pertussis, Tetanus)	65,412	0.1	-	-	-	99.9	-	
OPV (Oral Polio Vaccine)	74,255	7.8	4.0	-	-	88.2	-	
DT -Diphtheria, Tetanus (Children)	158	28.5	6.3	-	-	62.7	2.5	()
TD - Tetanus, Diphtheria (Adult)	29,302	11.6	7.5	42.3	-	37.7	0.9	()
TT (Tetanus Toxoid) Pregnant women	-	-	-	-	-	-	-	()
MMR (Mumps, Measles, Rubella)	42,583	5.0	1.7	29.7	-	63.5	-	
BCG (Bacillus Calmette Guerin) ²	3,091	25.8	14.5	-	59.7	-	-	² ()
Cholera	-	-	-	-	-	-	-	
Typhoid fever	11,691	5.8	-	-	6.3	86.6	1.3	
Yellow fever	521	-	-	-	91.7	-	8.3	
Meningococcal ACYW	52,620	4.9	0.8	-	1.4	91.3	1.6	
Hepatitis B (Child)	60,856	7.8	4.4	-	-	87.8	-	-
Hepatitis B (Adult)	39,821	7.3	0.7	84.4	-	3.8	3.7	-
Haemophilus Influenzae B (Hib)	60,643	7.7	4.4	-	-	87.9	0.0	()
Rabies	7	-	-	-	-	-	100.0	
Pneumococcal	957	96.0	0.1	-	-	0.9	2.9	
Hepatitis A - Child	31,251	9.7	2.8	-	-	87.4	0.1	()
Hepatitis A - Adult	2,660	37.9	3.1	-	-	30.2	28.8	()
Injection Polio Vaccine (IPV) ³	4	-	-	-	-	100.0	-	³
Chickenpox	1,933	99.3	0.2	-	-	0.3	0.2	()
Influenza	7,251	38.3	1.8	-	0.4	30.7	28.8	()

¹ Sh. Sabah H.C: vaccinations are carried out at this Health Center on behalf of the Public Health Directorate, which include vaccinations to travelers and schools. Those vaccinations carried out for patients within its own catchment area are included under "Health Centers".

² BCG vaccination, which provides protection against tuberculosis, is given at pre-school age (4-6 years old) to those children who are found to be tuberculin negative .

³ Injection Polio Vaccine ((IPV) is given to children for special cases.

Table 7.3

2007
 Immunization Coverage Among Children (2 Years) by Registered Live Births at Health Centers and Nationality 2007

Immunization Coverage																		Health Center
1 st dose of Hepatitis A (HAV1)			(3 rd dose of Haemophilus Influenzae b (Hib)			3 rd dose of Viral Hepatitis B (HB)			3 rd dose of Diphtheria, Tetanus & Pertussis (DPT & DT)			1 st dose of Diphtheria, Diphtheria, Tetanus & Pertussis (DPT & DT)			3 rd dose of Oral Polio (OPV)			
%	Non-Bah	Bah	%	Non-Bah	Bah	%	Non-Bah	Bah	%	Non-Bah	Bah	%	Non-Bah	Bah	%	Non-Bah	Bah	
96.2	114.5	90.8	90.3	83.4	92.8	90.3	83.4	92.8	90.3	83.4	92.8	91.3	87.7	92.6	90.3	83.4	92.8	Region I
88.0	102.7	80.8	84.5	77.4	89.2	84.5	77.4	89.2	84.5	77.4	89.2	85.9	87.0	85.2	84.5	77.4	89.2	Muharraq
104.9	124.8	95.0	96.1	91.9	98.7	96.1	91.9	98.7	96.1	91.9	98.7	95.4	88.0	100.0	96.1	91.9	98.7	Sh.Salman
91.6	119.7	88.4	89.2	78.8	90.6	89.2	78.8	90.6	89.2	78.8	90.6	91.5	98.8	90.5	89.2	78.8	90.6	National Bank of Bahrain - Arad -
102.2	113.8	101.3	92.6	78.6	93.4	92.6	78.6	93.4	92.6	78.6	93.4	94.0	60.7	96.1	92.6	78.6	93.4	National Bank of Bahrain - Dair -
93.3	94.8	91.2	82.8	74.4	95.7	82.9	74.6	95.8	82.8	74.4	95.7	76.3	69.8	86.5	82.8	74.4	95.7	Region II
88.3	84.6	93.1	92.8	84.1	104.8	92.8	84.1	104.8	92.8	84.1	104.8	87.0	79.7	97.0	92.8	84.1	104.8	Naim
96.6	105.1	82.4	81.3	73.0	101.5	82.2	74.0	102.3	81.3	73.0	101.5	80.7	76.2	91.6	81.3	73.0	101.5	Ibn Sinna
88.0	84.9	90.9	78.2	64.1	92.4	78.2	64.1	92.4	78.2	64.1	92.4	63.9	49.7	78.2	78.2	64.1	92.4	Sh.Sabah Al Salem
110.5	114.1	101.0	73.1	73.8	71.2	73.1	73.8	71.2	73.1	73.8	71.2	73.4	72.5	76.0	73.1	73.8	71.2	Al Hooraa
93.0	35.2	98.6	87.5	29.0	93.5	87.5	29.0	93.5	87.5	29.0	93.5	85.5	40.4	90.1	87.5	29.0	93.5	Region III
90.7	50.6	95.5	82.0	42.5	86.9	82.0	42.5	86.9	82.0	42.5	86.9	82.4	65.5	84.4	82.0	42.5	86.9	Isa Town
102.2	54.0	104.8	102.3	36.5	107.0	102.3	36.5	107.0	102.3	36.5	107.0	95.9	52.9	99.0	102.3	36.5	107.0	Jidhafs
84.8	10.9	97.0	80.4	7.7	92.2	80.4	7.7	92.2	80.4	7.7	92.2	77.4	12.6	87.9	80.4	7.7	92.2	Budaiya
91.9	39.4	95.9	83.8	48.5	86.6	83.8	48.5	86.6	83.8	48.5	86.6	85.8	36.4	89.6	83.8	48.5	86.6	Bilad Al Kadeem
96.5	45.5	98.4	88.6	44.4	89.8	88.6	44.4	89.8	88.6	44.4	89.8	88.8	27.8	90.4	88.6	44.4	89.8	A'Ali
90.2	72.5	94.3	80.6	56.4	86.7	80.6	56.4	86.7	80.6	56.4	86.7	79.9	59.5	85.0	80.6	56.4	86.7	Region IV
79.1	16.9	85.3	80.4	24.2	87.6	80.4	24.2	87.6	80.4	24.2	87.6	78.3	25.3	85.2	80.4	24.2	87.6	Hamad Town
101.0	77.3	101.6	93.7	56.3	94.9	93.7	56.3	94.9	93.7	56.3	94.9	94.1	62.5	95.1	93.7	56.3	94.9	Sitra
78.1	78.2	78.0	61.0	61.0	61.0	61.0	61.0	61.0	61.0	61.0	61.0	60.8	59.1	61.6	61.0	61.0	61.0	Hamad Kanoo & Jaw & Asker Clinic
90.0	86.6	92.0	69.7	63.5	74.0	69.7	63.5	74.0	69.7	63.5	74.0	71.4	71.2	71.6	69.7	63.5	74.0	East Riffa
90.1	2.6	96.0	91.3	11.4	95.8	91.3	11.4	95.8	91.3	11.4	95.8	88.7	14.3	92.9	91.3	11.4	95.8	Kuwait
95.6	5.4	105.4	95.1	1.8	105.1	95.1	1.8	105.1	95.1	1.8	105.1	92.8	8.8	101.9	95.1	1.8	105.1	Mohammed Jassim Kanoo
NA	NA	NA	NA	NA	NA	NA	NA	NA	NA	NA	NA	NA	NA	NA	NA	NA	NA	Zallaq
92.6	83.5	95.2	84.9	64.8	91.1	84.9	64.9	91.1	84.9	64.8	91.1	83.2	66.3	88.4	84.9	64.8	91.1	% HC Coverage
7.4	4.1	3.3	11.8	5.3	6.5	11.8	5.3	6.5	11.8	5.3	6.5	13.7	6.1	7.6	11.8	5.3	6.5	% Private Coverage
100.0	87.6	98.5	96.7	70.1	97.6	96.7	70.2	97.6	96.7	70.1	97.6	96.9	72.4	96.0	96.7	70.1	97.6	Total & Percentage

Note: Refer to conventions used in the report.

Table 7.4 جدول (6 - 1)

2007

Immunization Coverage Among Children (1 - 6 Years) and Pregnant Women by Registered Live Births in Health Centers and Nationality 2007

* protection rate at birth by TT2 (PAB) *		* % of pregnant women received 2 or more doses of tetanus toxoid (TT2+) *		Immunization Coverage											Health Center
				Meningo- coccal (MENING)		2 nd dose of Hepatitis A (HAV2)			2 nd dose of Mumps, Measles, Rubella (MMR2)			1 st dose of Mumps, Measles, Rubella (MMR1)			
%	Total	%	Total	%	Total	%	%	%	%	%	%	%	%	%	
							N-Bah	Bah		N-Bah	Bah		N-Bah	Bah	
87.1	2,150	29.9	816	139.7	3,406	99.3	106.7	97.1	83.7	105.9	77.1	97.5	116.7	92.0	Region I
90.5	639	40.4	334	132.9	926	87.1	96.3	82.3	71.8	89.0	62.1	93.5	108.8	86.0	Muharraq
73.9	522	32.8	244	138.1	917	107.5	128.4	98.5	85.3	128.4	66.2	104.9	124.8	95.0	Sh.Salman
96.7	581	28.7	191	149.4	995	95.2	67.0	99.8	98.8	91.4	99.6	91.5	118.2	88.4	National Bank of Bahrain - Arad -
89.7	408	9.6	47	138.2	568	113.1	200.0	108.7	77.5	128.6	75.2	101.4	110.3	100.8	National Bank of Bahrain - Dair -
65.8	1,195	30.5	730	117.6	2,585	89.9	91.3	88.1	86.6	89.2	83.6	92.4	92.9	91.6	Region II
66.8	459	36.4	289	118.9	848	89.8	86.5	93.5	75.0	66.2	84.8	90.4	87.4	94.3	Naim
66.7	242	36.4	165	114.5	481	91.2	95.4	82.5	81.4	84.4	76.3	96.1	104.4	82.4	Ibn Sinna
64.5	304	17.8	132	124.1	830	87.6	89.3	86.2	95.0	100.0	91.6	86.9	80.0	93.4	Sh.Sabah al Salem
64.4	190	35.6	144	107.6	426	92.9	95.7	86.4	99.3	119.1	68.3	103.0	107.2	91.8	Al Hoora
92.3	4,187	34.2	1,831	108.9	5,501	92.0	31.9	97.2	94.1	48.9	97.8	93.0	35.2	98.7	Region III
96.5	1,261	35.1	562	109.5	1,661	89.2	36.5	94.4	93.1	67.2	96.0	90.7	50.6	95.5	Isa Town
90.7	1,111	39.1	502	117.3	1,512	95.2	31.4	98.9	88.4	21.3	91.2	102.0	54.0	104.6	Jidhafs
90.0	919	29.6	395	94.9	1,126	86.7	28.8	95.4	91.1	29.7	99.1	86.5	10.9	98.9	Budaiya
93.6	368	33.3	153	106.2	479	89.6	36.0	92.7	91.7	82.6	92.4	91.5	39.4	95.4	Bilad Al Kadeem
89.2	528	32.5	219	119.1	723	104.1	17.6	106.6	123.6	54.5	125.6	94.3	45.5	96.1	A'Ali
80.1	3,544	28.3	1,580	118.4	6,063	88.6	66.8	93.4	102.0	107.2	100.8	88.6	67.3	93.6	Region V
70.9	444	16.4	133	127.7	972	84.0	22.5	90.3	80.9	25.3	89.3	79.5	15.5	85.8	Hamad Town
86.5	868	33.4	359	116.8	1,143	100.5	61.9	101.4	81.1	40.0	82.2	100.8	81.8	101.3	Sitra
84.7	640	22.5	282	95.9	1,037	69.2	74.5	66.8	121.0	136.9	112.9	74.1	74.7	73.8	Hamad Kanoo & Jaw & Asker Clinic
68.9	586	27.7	334	136.2	1,430	77.0	83.9	73.2	91.0	110.5	79.6	86.4	77.1	92.2	East Riffa
99.5	576	39.8	261	106.4	663	98.2	0.0	107.2	102.9	10.3	109.2	90.3	10.3	95.7	Kuwait
57.8	315	31.5	185	117.5	737	107.7	1.8	118.2	123.5	3.1	132.8	95.6	5.4	105.4	Mohammed Jassim Kanoo
174.2	115	-	26	-	81	-	-	-	-	-	-	-	-	-	Zallaq
83.6	11,076	30.9	4,957	118.6	17,555	91.7	79.1	95.1	93.6	93.0	93.7	92.2	81.6	95.2	% HC Coverage to
12.4	1,992	8.7	1,403	15.1	2,237	8.3	4.2	4.1	6.4	4.1	2.3	7.8	4.2	3.6	% Private Coverage to
96.0	13,068	39.6	6,360	133.7	19,792	100.0	83.3	99.2	100.0	97.1	96.0	100.0	85.8	98.8	Total & Percentage

* Refer to conventions used in the report.

*

Figure 7.1
2007 - 1998 (7- 6) 10mm
Positive Tuberculin Test Rates more than 10mm for Children at School Entry (6-7 years) 1998 - 2007

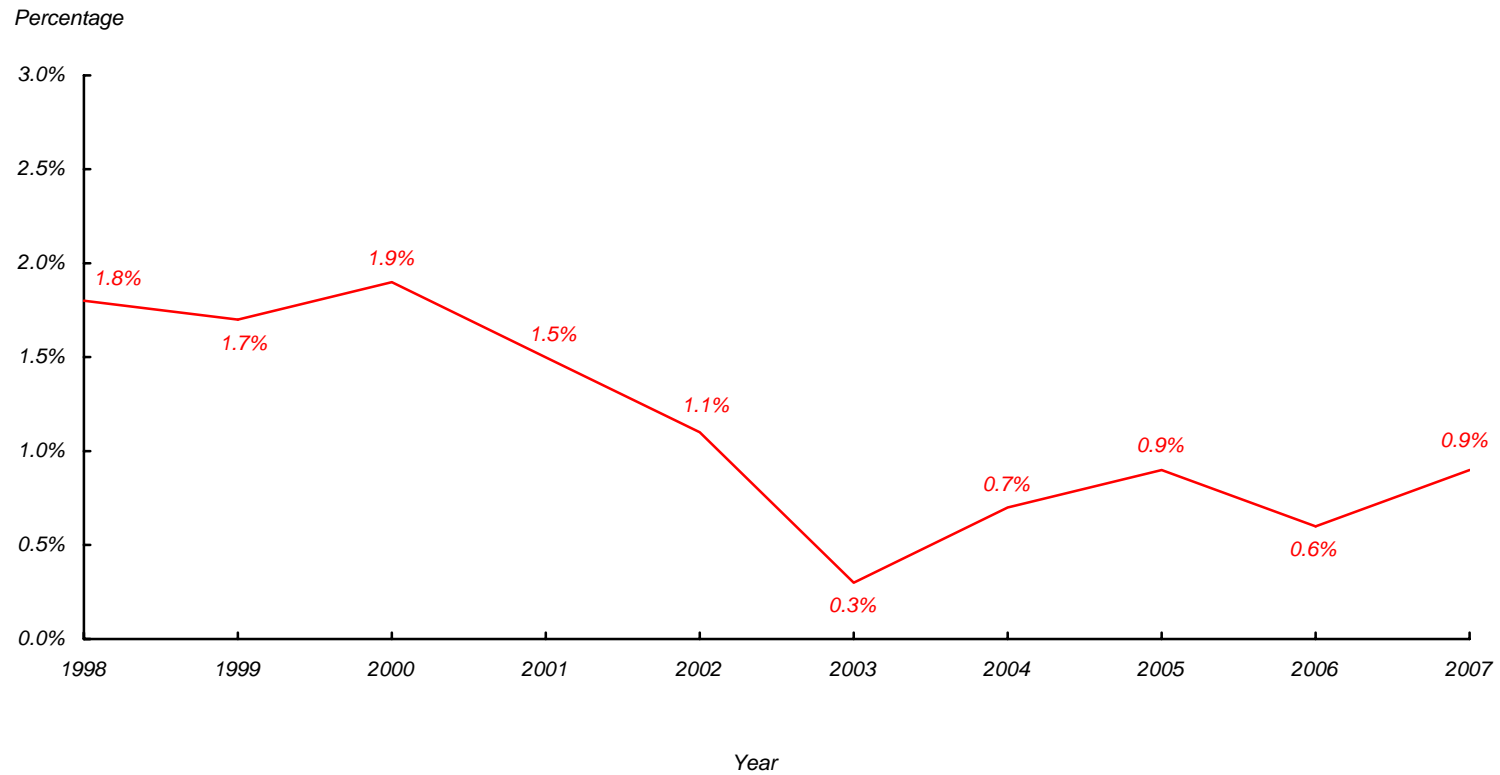


Table 7.5
2007
(7.8mmol/L)
Number of New Cases with Fasting Blood Sugar more than 7.8 mmol/L by Nationality, Age Groups and Sex 2007

<i>Total</i>			<i>Non-Bahraini</i>			<i>Bahraini</i>			<i>Age Group</i>
<i>Total</i>	<i>Female</i>	<i>Male</i>	<i>Total</i>	<i>Female</i>	<i>Male</i>	<i>Total</i>	<i>Female</i>	<i>Male</i>	
199	112	87	14	3	11	185	109	76	>20
2,466	1,388	1,078	562	233	329	1,904	1,155	749	20 - 40
13,892	8,283	5,609	2,026	811	1,215	11,866	7,472	4,394	41 - 60
6,794	4,144	2,650	279	149	130	6,515	3,995	2,520	< 60
23,351	13,927	9,424	2,881	1,196	1,685	20,470	12,731	7,739	Total

Table 7.6
2007
(6.2mmol/L)
Number of New Cases Tested for Cholesterol, Level more than 6.2 mmol/L
by Nationality, Age Groups and Sex 2007

<i>Total</i>			<i>Non-Bahraini</i>			<i>Bahraini</i>			<i>Age Group</i>
<i>Total</i>	<i>Female</i>	<i>Male</i>	<i>Total</i>	<i>Female</i>	<i>Male</i>	<i>Total</i>	<i>Female</i>	<i>Male</i>	
76	46	30	6	3	3	70	43	27	> 20
1,743	904	839	424	176	248	1,319	728	591	20 - 40
6,046	3,855	2,191	1,056	513	543	4,990	3,342	1,648	41 - 60
2,365	1,700	665	102	62	40	2,263	1,638	625	< 60
10,230	6,505	3,725	1,588	754	834	8,642	5,751	2,891	Total

Table 7.7
2007 - 2003
Incidences of Notifiable Communicable Diseases 2003 - 2007

		<i>2007</i>	<i>2006</i>	<i>2005</i>	<i>2004</i>	<i>2003</i>		<i>ICD-10 Code</i>
I M M U N I Z A B L E	Typhoid fever	8	12	12	11	15		A01.0
	Pulmonary TB *	180	170	171	126	132	*	A15-A16
	Non-pulmonary TB *	111	107	109	116	109	*	A17-A19
	Diphtheria	-	-	-	-	-	()	A36
	Whooping cough	-	-	-	-	-	()	A37
	Neonatal tetanus	-	-	-	-	-	()	A33
	Non-neonatal tetanus	-	-	-	-	1		A34-A35
	Meningococcal meningitis	-	-	-	-	-		A39.0
	Haemophilus Influenzae (b) meningitis	-	-	-	-	-	()	G00.0
	Poliomyelitis	-	-	-	-	-		A80
	Measles	7	3	4	11	12		B05
	Mumps	93	23	87	35	35	()	B26
	Rubella	5	3	7	2	7		B06
	Chickenpox	8,606	3,231	1,812	2,924	2,579	()	B01
	Influenza	4,469	3,898	4,221	4,010	4,400	()	J10-J11
	Yellow Fever (Jaundice)	-	-	-	-	-	()	P58-P59
Viral hepatitis							B15-B19	
	A	123	144	189	246	236		
	B	24	21	27	35	21		
	C	3	7	4	11	14		
	E	13	16	19	34	22		
N O N - I D M I S S U E N A I S E Z A S B L E	Other meningitis	38	57	22	39	44		G02-G03
	Paratyphoid fever	7	3	4	8	10		A01.1
	Other salmonella infection	397	346	400	317	339		A02
	Acute Flaccid Paralysis	5	4	4	2	2		G82.0
	Shigellosis	125	70	100	178	162		A03
	Food poisoning	286	232	282	273	156		A05
	Amoebiasis	37	-	9	15	13		A06
	Malaria (P.falciparum)	7	11	11	3	32		B50
	Malaria (P.vivax)	92	57	57	81	55		B51
	Malaria Mixed	1	2	3	1	-		B52
	Syphilis	232	183	237	191	242	()	A50-A54
	Gonococcal infection	352	231	212	233	488	()	A55
	Streptococcal sore throat	3,424	1,841	1,058	489	775		A41
	Leprosy	2	3	-	1	12		A31
	AIDS	1	3	10	5	11		B20-B25
	Other and unspecified predominantly sexually transmitted diseases not elsewhere classified	84	149	433	458	...		A63-A64

* Bahraini & Non-Bahraini were included, non-Bahraini repatriated after receiving the required treatment according to national policy.

Table 7.8
2007 - 2003 **100,000**
Incidence Rates Per 100,000 Population of Notifiable Communicable Diseases 2003 - 2007

	<i>Disease</i>	<i>%Change</i>	<i>2007</i>	<i>2006</i>	<i>2005</i>	<i>2004</i>	<i>2003</i>		<i>ICD-10 Code</i>
I M M U N I Z A B L E D I S E A S E S	Typhoid fever	-2.4	0.8	1.6	1.7	1.6	2.2		A01.0
	Pulmonary TB *	-3.0	17.3	22.9	23.6	17.8	19.1	*	A15-A16
	Non-pulmonary TB *	-4.2	10.7	14.4	15.0	16.4	15.8	*	A17-A19
	Diphtheria	-	-	-	-	-	-	()	A36
	Whooping cough	-	-	-	-	-	-	()	A37
	Neonatal tetanus	-	-	-	-	-	-	()	A33
	Non-neonatal tetanus	-	-	-	-	-	0.1		A34-A35
	Meningococcal meningitis	-	-	-	-	-	-		A39.0
	Haemophilus Influenzae (b) meningitis	-	-	-	-	-	-	()	G00.0
	Poliomyelitis	-	-	-	-	-	-		A80
	Measles	-26.8	0.7	0.4	0.6	1.6	1.7		B05
	Mumps	-74.2	8.9	3.1	12.0	4.9	5.1	()	B26
	Rubella	-58.2	0.5	0.4	1.0	0.3	1.0		B06
	Chickenpox	74.0	828.1	435.1	250.1	413.5	374.1	()	B01
	Influenza	-9.9	430.0	524.9	582.5	567.0	638.2	()	J10-J11
	Yellow Fever (Jaundice)	-	-	-	-	-	-	()	P58-P59
Viral hepatitis								B15-B19	
	A	-25.6	11.8	19.4	26.1	34.8	34.2		
	B	-24.1	2.3	2.8	3.7	4.9	3.0		
	C	70.8	0.3	0.9	0.6	1.6	2.0		
	E	-17.8	1.3	2.2	2.6	4.8	3.2		
N O N - I D I M M U N I T Y D I S E A S E S	Other meningitis	152.8	3.7	7.7	3.0	5.5	6.4		G02-G03
	Paratyphoid fever	-26.8	0.7	0.4	0.6	1.1	1.5		A01.1
	Other salmonella infection	-15.6	38.2	46.6	55.2	44.8	49.2		A02
	Acute Flaccid Paralysis	-2.4	0.5	0.5	0.6	0.3	0.3		G82.0
	Shigellosis	-31.7	12.0	9.4	13.8	25.2	23.5		A03
	Food poisoning	-19.7	27.5	31.2	38.9	38.6	22.6		A05
	Amoebiasis	-	3.6	-	1.2	2.1	1.9		A06
	Malaria (P.falciparum)	-2.4	0.7	1.5	1.5	0.4	4.6		B50
	Malaria (P.vivax)	-2.4	8.9	7.7	7.9	11.5	8.0		B51
	Malaria Mixed	-34.9	0.1	0.3	0.4	0.1	-		B52
	Syphilis	-24.6	22.3	24.6	32.7	27.0	35.1	()	A50-A53
	Gonococcal infection	6.3	33.9	31.1	29.3	32.9	70.8	()	A54
	Streptococcal sore throat	69.8	329.5	247.9	146.0	69.1	112.4		A40
	Leprosy	100	0.2	0.4	-	0.1	1.7		A30
AIDS	-70.7	0.1	0.4	1.4	0.7	1.6		B20-B24	
Other and unspecified predominantly sexually transmitted diseases not elsewhere classified	-66.4	8.1	20.1	59.8	64.8	...		A63-A64	

* Bahraini & Non-Bahraini were included, non-Bahraini repatriated after receiving the required treatment according to national policy.

Table 7.9

2007

Annual Distribution of Viral Hepatitis Incidences by Nationality, Age Groups and Sex 2007

<i>Viral Hepatitis</i>													
<i>Total</i>				<i>Bahraini</i>				<i>Bahraini</i>					
E	C	B	A	E	C	B	A	E	C	B	A	<i>Sex</i>	<i>Age Groups</i>
-	-	-	7	-	-	-	3	-	-	-	4	4 Male	0-4
-	-	-	4	-	-	-	1	-	-	-	3	3 Female	
-	-	-	11	-	-	-	4	-	-	-	7	7 Total	
1	-	-	32	1	-	-	10	-	-	-	22	22 Male	5-14
-	-	-	31	-	-	-	12	-	-	-	19	19 Female	
1	-	-	63	1	-	-	22	-	-	-	41	41 Total	
5	1	3	28	3	-	-	9	2	1	3	19	19 Male	15-21
2	-	1	12	-	-	1	5	2	-	-	7	7 Female	
7	1	4	40	3	-	1	14	4	1	3	26	26 Total	
2	1	9	3	2	-	5	2	-	1	4	1	1 Male	25-34
1	-	2	3	-	-	2	1	1	-	-	2	2 Female	
3	1	11	6	2	-	7	3	1	1	4	3	3 Total	
1	-	3	-	1	-	2	-	-	-	1	-	- Male	35-44
-	-	2	-	-	-	2	-	-	-	-	-	- Female	
1	-	5	-	1	-	4	-	-	-	1	-	- Total	
-	-	3	-	-	-	1	-	-	-	-	2	- Male	45-54
1	1	-	2	1	-	-	-	-	1	-	2	2 Female	
1	1	3	2	1	-	1	-	-	1	2	2	2 Total	
-	-	-	-	-	-	-	-	-	-	-	-	- Male	55-64
-	-	-	1	-	-	-	-	-	-	-	1	1 Female	
-	-	-	1	-	-	-	-	-	-	-	1	1 Total	
-	-	1	-	-	-	-	-	-	-	-	1	- Male	65 +
-	-	-	-	-	-	-	-	-	-	-	-	- Female	
-	-	1	-	-	-	-	-	-	-	-	1	- Total	
9	2	19	70	7	-	8	24	2	2	11	46	46 Male	Total
4	1	5	53	1	-	5	19	3	1	-	34	34 Female	
13	3	24	123	8	-	13	43	5	3	11	80	80 Total	

Table 7.10

2007

Annual Distribution of Viral Hepatitis Incidences by Governorate, Nationality and Sex 2007

<i>Viral Hepatitis</i>													
<i>Total</i>				<i>Bahraini</i>				<i>Bahraini</i>					
E	C	B	A	E	C	B	A	E	C	B	A	<i>Sex</i>	<i>Governorate</i>
2	-	6	17	2	-	-	4	-	-	6	13	Male	Muharraq
1	-	1	14	-	-	1	6	1	-	-	8	Female	
3	-	7	31	2	-	1	10	1	-	6	21	Total	
3	-	5	20	2	-	5	12	1	-	-	8	Male	Capital
1	-	3	13	1	-	3	10	-	-	-	3	Female	
4	-	8	33	3	-	8	22	1	-	-	11	Total	
1	1	3	8	-	-	-	-	1	1	3	8	Male	Northern
1	-	-	10	-	-	-	1	1	-	-	9	Female	
2	1	3	18	-	-	-	1	2	1	3	17	Total	
-	1	5	18	-	-	3	4	-	1	2	14	Male	Central
1	1	1	12	-	-	1	2	1	1	-	10	Female	
1	2	6	30	-	-	4	6	1	2	2	24	Total	
3	-	-	7	3	-	-	4	-	-	-	3	Male	Southern
-	-	-	4	-	-	-	-	-	-	-	4	Female	
3	-	-	11	3	-	-	4	-	-	-	7	Total	
9	2	19	70	7	-	8	24	2	2	11	46	Male	Total
4	1	5	53	1	-	5	19	3	1	-	34	Female	
13	3	24	123	8	-	13	43	5	3	11	80	Total	

جدول 7.11
 " "
 2007
 Hepatitis "B" Carriers by Age Groups, Nationality and Sex 2007

<i>Total</i>			<i>Non-Bahraini</i>			<i>Bahraini</i>			<i>Age Groups</i>
<i>Total</i>	<i>Female</i>	<i>Male</i>	<i>Total</i>	<i>Female</i>	<i>Male</i>	<i>Total</i>	<i>Female</i>	<i>Male</i>	
-	-	-	-	-	-	-	-	-	Less than 1 Year
-	-	-	-	-	-	-	-	-	1-4
3	3	-	-	-	-	3	3	-	5-14
141	60	81	111	50	61	30	10	20	15-24
271	122	149	242	115	127	29	7	22	25-34
-	-	-	-	-	-	-	-	-	30-34
173	72	101	140	61	79	33	11	22	35-44
69	18	51	50	13	37	19	5	14	45-54
-	-	-	-	-	-	-	-	-	50-54
20	4	16	14	1	13	6	3	3	55-64
16	4	12	2	1	1	14	3	11	65 +
693	283	410	559	241	318	134	42	92	Total

جدول 7.12
 " "
 2007
 Hepatitis "B" Carriers by Geographical Region, Nationality and Sex 2007

<i>Total</i>			<i>Non-Bahraini</i>			<i>Bahraini</i>			<i>Geographical Region</i>
<i>Total</i>	<i>Female</i>	<i>Male</i>	<i>Total</i>	<i>Female</i>	<i>Male</i>	<i>Total</i>	<i>Female</i>	<i>Male</i>	
21	8	13	17	8	9	4	-	4	Hidd
81	29	52	67	27	40	14	2	12	Muharraq
223	71	152	210	68	142	13	3	10	Manama
41	20	21	26	16	10	15	4	11	Jidhafs
36	18	18	25	14	11	11	4	7	Northern
28	16	12	16	11	5	12	5	7	Sitra
37	17	20	27	17	10	10	-	10	Central
35	18	17	24	16	8	11	2	9	Isa Town
127	47	80	101	32	69	26	15	11	Riffa
19	7	12	15	6	9	4	1	3	Western
-	-	-	-	-	-	-	-	-	Southern
45	32	13	31	26	5	14	6	8	Hamad Town
693	283	410	559	241	318	134	42	92	Total

Table 7.13
2007
100,000
Selected Communicable Diseases Incidences & Rates Per 100,000 Population by Age Groups 2007

<i>Measles</i>		<i>Typhoid fever</i>		<i>Paratyphoid fever</i>		<i>Shigellosis</i>		<i>Salmonellosis</i>		* <i>Population Estimates * 2007</i>	<i>() Age Groups (Years)</i>
<i>Rate</i>	<i>Cases</i>	<i>Rate</i>	<i>Cases</i>	<i>Rate</i>	<i>Cases</i>	<i>Rate</i>	<i>Cases</i>	<i>Rate</i>	<i>Cases</i>		
4.0	3	1.3	1	1.3	1	57.7	43	229.4	171	74,530	0-4
-	-	1.4	2	-	-	26.2	38	17.9	26	145,083	5-14
-	-	0.6	1	1.2	2	8.4	14	12.0	20	166,491	15-24
0.4	1	1.1	3	0.8	2	3.8	10	25.0	66	264,410	25-34
1.0	2	0.5	1	1.0	2	5.0	10	22.8	46	201,635	35-44
0.8	1	-	-	-	-	4.1	5	22.3	27	120,963	45-54
-	-	-	-	-	-	5.0	2	65.1	26	39,935	55-64
-	-	-	-	-	-	11.4	3	57.1	15	26,250	65+
0.7	7	0.8	8	0.7	7	12.0	125	38.2	397	1,039,297	Total الجملة

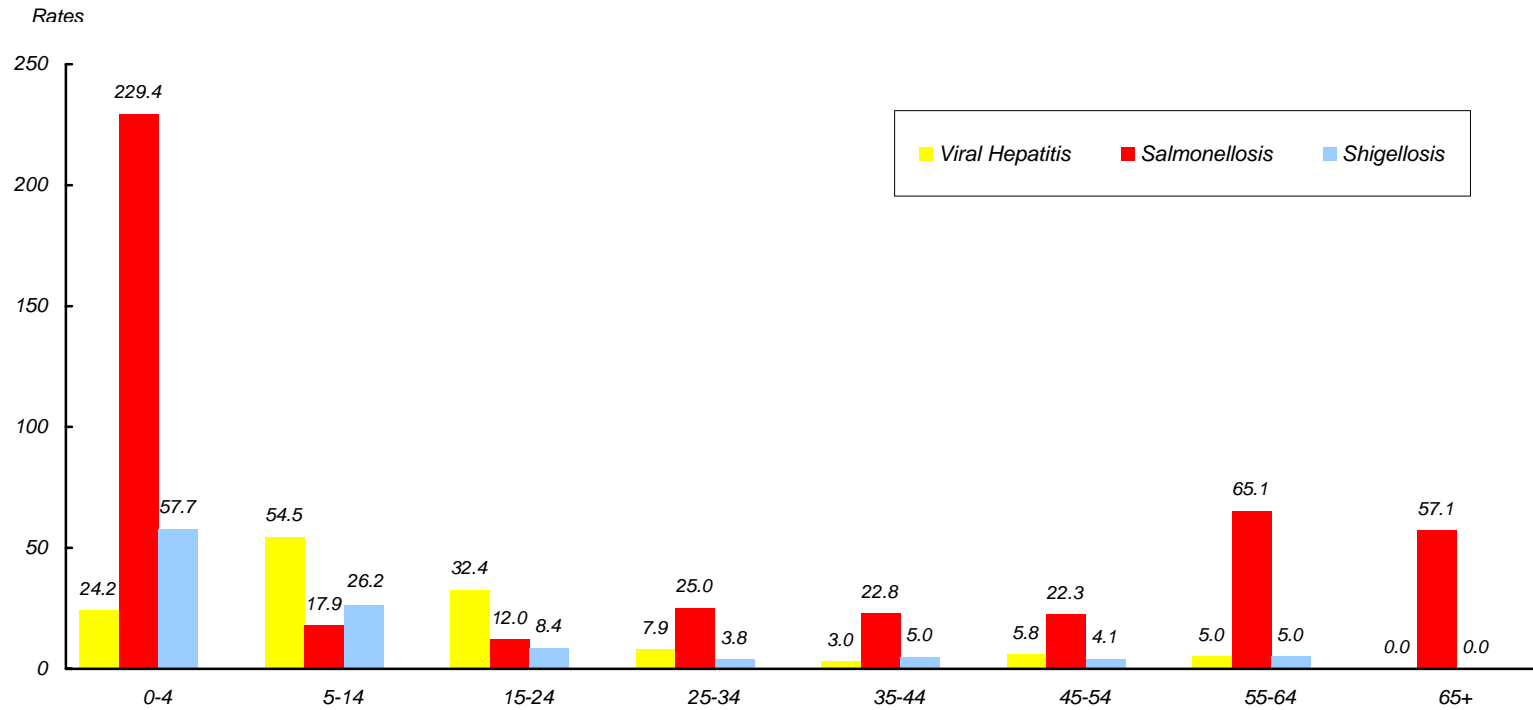
* Based on Central Population Registry (CPR) August, 2007
adjusted as for 2007 mid year population (1st July 2007).

2007

.(2007) 2007

*

Figure 7.2
2007
100,000
Selected Communicable Diseases Incidences Rates Per 100,000 Population by Age Groups 2007



Reference: Table 7.13

مرجع: جدول 7.13

Table 7.14
2007 **100,000**
Report Numbers, Percentages and Rates per 100,00 Population of Tuberculosis by Nationality and Age Groups 2007

<i>Non-Pulmonary Tuberculosis</i>						<i>Pulmonary Tuberculosis</i>						<i>Population Estimates</i>			<i>()</i>
<i>Non-Bahrainin</i>			<i>Bahraini</i>			<i>Non-Bahrainin</i>			<i>Bahraini</i>						
<i>Rate</i>	<i>%</i>	<i>No.</i>	<i>Rate</i>	<i>%</i>	<i>No.</i>	<i>Rate</i>	<i>%</i>	<i>No.</i>	<i>Rate</i>	<i>%</i>	<i>No.</i>	<i>Total</i>	<i>Non-Bah</i>	<i>بحريني Bahraini</i>	<i>Age Groups (Years)</i>
11.3	2.4	2	3.5	6.9	2	-	-	-	-	-	-	74,530	17,776	56,754	1-4
-	-	-	2.7	10.3	3	-	-	-	1.8	6.7	2	145,083	32,660	112,422	5-14
21.7	15.9	13	4.7	17.2	5	43.5	17.3	26	0.9	3.3	1	166,491	59,781	106,710	15-24
20.8	46.3	38	2.4	6.9	2	41.0	50.0	75	1.2	3.3	1	264,410	182,713	81,697	25-34
12.7	20.7	17	2.9	6.9	2	25.4	22.7	34	5.9	13.3	4	201,635	133,739	67,896	35-44
13.3	11.0	9	3.7	6.9	2	19.3	8.7	13	15.0	26.7	8	120,963	67,532	53,431	45-54
6.6	1.2	1	36.3	31.0	9	13.2	1.3	2	16.1	13.3	4	39,935	15,150	24,785	55-64
79.6	2.4	2	16.9	13.8	4	-	-	-	42.1	33.3	10	26,250	2,512	23,738	65+
16.0	100.0	82	5.5	100.0	29	29.3	100.0	150	5.7	100.0	30	1,039,297	511,864	527,433	Total الجملة

Note: Percentage of the total cases.

Table 7.15

Reserved for future use

Table 7.16
2007 - 2003
Water Supply Bacteriological and Chemical Test Results by Source 2003 - 2007

<i>Source</i>	<i>2007</i>		<i>2006</i>		<i>2005</i>		<i>2004</i>		<i>2003</i>	
	<i>%</i>		<i>%</i>		<i>%</i>		<i>%</i>		<i>%</i>	
	<i>Unsatis- factory</i>	<i>No. of samples</i>	<i>Unsatis- factory</i>	<i>No. of samples</i>	<i>Unsatis- factory</i>	<i>No. of samples</i>	<i>Unsatis- factory</i>	<i>No. of samples</i>	<i>Unsatis- factory</i>	<i>No. of samples</i>
Public water	9.2	1,450	7.2	832	12.2	1,548	1.8	1,884	3.8	1,900
Demineralized water	-	-	-	-	-	-	-	-	-	-
Schools, Hospitals, Hotels	8.1	3,075	12.7	1,991	13.1	2,910	7.1	3,109	13.1	3,385
Total	17.3	4,525	11.1	2,823	12.8	4,458	5.1	4,993	9.9	5,285

Table 7.17
2007 - 2004
Examined and Positive Breeding Spots of Mosquito by Governorate 2004 - 2007

<i>Governorate</i>	<i>2007</i>	<i>2006</i>	<i>2005</i>	<i>2004</i>
Potential spots examined				
Muharraq	5,527	13,036	7,682	8,502
Capital	43,315	69,195	29,776	23,043
Central	25,928	4,246	25,536	28,946
Northern	32,952	68,163	37,802	40,364
Southern	10,919	20,466	10,411	10,002
Total	118,641	175,106	111,207	110,857
Positive Culex spots				
Muharraq	67	155	69	33
Capital	1,044	1,844	532	505
Central	516	839	485	417
Northern	2,189	2,725	1,773	1,543
Southern	211	331	185	150
Total	4,027	5,894	3,044	2,648
Positive Anopheles spots				
Muharraq	1	22	13	-
Capital	7	36	30	10
Central	25	91	60	18
Northern	94	305	127	62
Southern	9	12	13	1
Total	136	466	243	91

Table 7.18
2007
Malaria Cases by Country of Origin 2007

<i>Country of Origin</i>	<i>Total</i>	<i>P.F.</i>	<i>P.V.</i>	<i>P.M.</i>	<i>Mixed (P.F. & P.V.)</i>
Kingdom of Bahrain	-	-	-	-	-
Republic of India	57	5	52	-	-
Islamic Republic of Pakistan	32	1	31	-	-
Sultanate of Oman	1	-	1	-	-
People's Republic of Bangladesh	1	1	-	-	-
Ethiopia	2	-	2	-	-
Kingdom of Nepal	1	-	1	-	-
Republic of Cameroon	1	-	1	-	-
Republic of the Philippines	1	-	1	-	-
Unknown	4	-	3	-	1
Total	100	7	92	-	1

P.F. - *Plasmodium falciparum* - often fatal form of malaria .

P.V. - *Plasmodium vivax* - usually mild form of malaria .

P.M. - *Plasmodium malaria* - mild form of malaria .

()

()

()

Table 7.19
2007 - 2006
Selected Serological Test Results 2006 - 2007

<i>Test / Source</i>	<i>2007</i>			<i>2006</i>			<i>/</i>
	<i>Positive samples</i>		<i>Total Samples</i>	<i>Positive samples</i>		<i>Total Samples</i>	
	<i>%</i>	<i>No.</i>		<i>%</i>	<i>No.</i>		
Hepatitis B surface antigen (HBsAg)							
Blood Bank	0.15	23	15,218	0.18	26	14,209	
Suspected cases	2.78	836	30,030	3.04	821	26,988	
Anti-HBs							
Postvaccination testing	57.22	1,129	1,973	62.37	799	1,281	
Hepatitis B, E antigen (HBeAg) *							*
HBsAg +ve cases	18.99	79	416	76.92	80	104	
Anti-HBe							
HBsAg +ve cases	64.67	302	467	72.57	336	463	
Hepatitis A (Igm)							
Suspected cases	5.25	101	1,924	6.59	121	1,835	
Rubella antibodies (IgG)							()
Suspected cases pregnant women at 1st antenatal visit, other women	95.88	15,204	15,858	96.34	13,998	14,530	
Rubella antibodies (IgM)							()
Suspected cases	0.98	5	511	0.91	4	439	
HIV antibodies							
Blood donors	0.01	1	15,218	0.02	3	14,209	
Pre-employment examination	0.11	44	39,782	0.15	55	35,894	

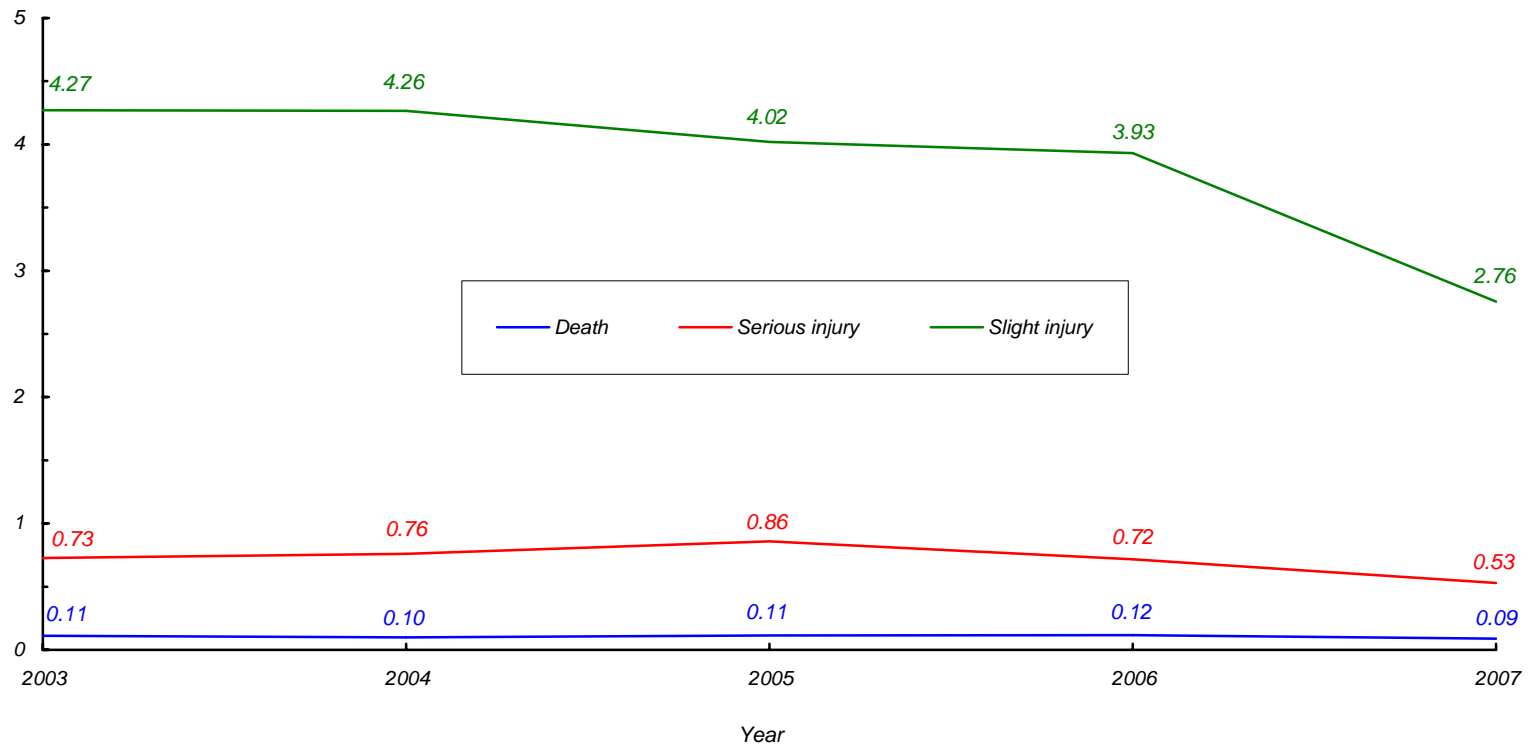
* Hepatitis B, E antigen (HBeAg): decrease / increase due to selective sample testing.

Table 7.20
2007 - 2003 **1000**
Number and Rates per 1000 population of Road and Traffic Related Accidents by Seriousness of Injuries and Sex 2003 - 2007

<i>Seriousness of Injury</i>	<i>Rate</i>	<i>Total</i>			<i>Pedestrians</i>		<i>Passengers</i>		<i>Drivers</i>		
		<i>Total</i>	<i>Female</i>	<i>Male</i>	<i>Female</i>	<i>Male</i>	<i>Female</i>	<i>Male</i>	<i>Female</i>	<i>Male</i>	
2003											2003
Death	0.11	77	8	69	4	21	4	10	-	38	
Serious injury	0.73	501	102	399	43	110	39	73	20	216	
Slight injury	4.27	2,945	953	1,992	78	273	535	601	340	1,118	
2004											2004
Death	0.10	70	10	60	3	23	7	9	-	28	
Serious injury	0.76	538	97	441	24	109	39	100	34	232	
Slight injury	4.26	3,016	985	2,031	102	283	530	656	353	1,092	
2005											2005
Death	0.11	83	15	68	2	24	11	12	2	32	
Serious injury	0.86	623	132	491	33	130	53	101	46	260	
Slight injury	4.02	2,912	953	1,959	96	280	526	695	331	984	
2006											2006
Death	0.12	87	13	74	4	22	7	18	2	34	
Serious injury	0.72	533	108	425	32	142	39	84	37	199	
Slight injury	3.93	2,919	973	1,946	103	311	503	599	367	1,036	
2007											2007
Death	0.09	91	8	83	3	23	2	16	3	44	
Serious injury	0.53	551	111	440	34	126	43	104	34	210	
Slight injury	2.76	2,864	879	1,985	109	316	432	631	338	1,038	

Source: Ministry of Interior - General Directorate of Traffic .

Figure 7.3
2007 - 2003 **1000**
Road & Traffic Related Accidents Rate Per 1000 Population by Seriousness of Injuries 2003 - 2007



Reference: Table 7.20

7.20 :

Table 7.21

2007

Number of Road and Traffic Related Accidents by Seriousness of Injuries and Age Groups 2007

Seriousness of Injury	Age Groups								
	Total	70+	69-60	59-50	49-40	39-30	29-20	19-10	09-00
Drivers									
Death	47	1	3	3	11	8	19	2	-
Serious injury	244	6	7	16	38	46	92	36	3
Slight injury	1,376	7	16	81	220	351	552	144	5
Total	1,667	14	26	100	269	405	663	182	8
Passengers									
Death	18	-	-	2	3	5	3	4	1
Serious injury	147	5	-	7	10	35	44	34	12
Slight injury	1,063	24	13	47	93	167	300	266	153
Total	1,228	29	13	56	106	207	347	304	166
Pedestrians									
Death	26	-	1	1	4	4	5	4	7
Serious injury	160	8	6	9	14	34	22	23	44
Slight injury	425	18	15	31	50	70	69	68	104
Total	611	26	22	41	68	108	96	95	155
Death	91	1	4	6	18	17	27	10	8
Serious injury	551	19	13	32	62	115	158	93	59
Slight injury	2,864	49	44	159	363	588	921	478	262
Grand Total	3,506	69	61	197	443	720	1106	581	329

Source: Ministry of Interior - General Directorate of Traffic .

Table 7.22
2007
Injury Accidents by Main Causes and Seriousness of Injury 2007

<i>Main Causes</i>	<i>Seriousness of Injury</i>			
	<i>Total</i>	<i>Slight injury</i>	<i>Serious injury</i>	<i>Death</i>
Accident due to Driver Action	1,850	1,350	418	82
Accident due to Pedestrian Action	80	55	25	-
Accident due to Passenger Action	7	4	3	-
Accident due to Obstruction	10	7	3	-
Accident due to Defective Vehicles	12	9	2	1
Accident due to Road Condition	12	12	-	-
Accident due to Weather Condition	4	4	-	-
Accident due to Animals	7	5	2	-
Accident due to Other Factors	87	71	16	-
Total	2,069	1,517	469	83

Source: Ministry of Interior - General Directorate of Traffic .

Table 7.23
2007
Injury Accidents by Region and Seriousness of Injury 2007

<i>Region</i>	<i>Seriousness of Injury</i>				<i>المنطقة</i>
	<i>Total</i>	<i>Slight injury</i>	<i>Serious injury</i>	<i>Death</i>	
Hidd	33	24	8	1	
Muharraq	146	105	34	7	
Manama	545	394	131	20	
Jidhafs	195	148	40	7	
Northern	149	101	42	6	
Sitra	151	112	34	5	
Central	134	102	28	4	
Isa Town	163	138	22	3	
Riffa	304	213	72	19	
Western	90	62	21	7	
Hawar Island	-	-	-	-	
Hamad Town	159	118	37	4	
Total	2,069	1,517	469	83	

Source: Ministry of Interior - General Directorate of Traffic .

Table 7.24
2007
Number of Road and Traffic Related Accidents by Seriousness of Injuries and Governorate 2007

<i>Seriousness of Injury</i>	<i>Governorate</i>						
	<i>Total</i>	<i>Muharraq</i>	<i>Capital</i>	<i>Northern</i>	<i>Central</i>	<i>Southern</i>	
Drivers							السواق
Death	47	3	9	10	14	11	
Serious injury	244	17	64	54	66	43	
Slight injury	1,376	128	357	296	427	168	
Passengers							الركاب
Death	18	3	3	3	4	5	
Serious injury	147	15	32	32	42	26	
Slight injury	1,063	88	254	258	317	146	
Pedestrians							المشاة
Death	26	3	10	2	7	4	
Serious injury	160	17	53	46	35	9	
Slight injury	425	38	141	116	99	31	
Total							الجملة
Death	91	9	22	15	25	20	
Serious injury	551	49	149	132	143	78	
Slight injury	2,864	254	752	670	843	345	

Source: Ministry of Interior - General Directorate of Traffic .

Table 7.25

2007

1000

Number and Rates of Occupational Injuries and Deaths Per 1000 Insured Persons by Nationality, Division of Economic Activity and Sex 2007

Number of Insured Persons							Total Deaths		Total Injuries		Non-Bahraini		Bahraini		Division of Economic Activity
Total	Bahraini			Bahraini			Rate	No.	Rate	No.	Injury		Injury		
	الجملة	Female	Male	الجملة	Female	Male					Female	Male	Female	Male	
	Total			Total											
4,609	4,290	12	4,278	319	40	279	-	-	4.6	21	-	3	5	13	Agriculture & Fishing
46	12	2	10	34	1	33	-	-	-	-	-	-	-	-	Mining & Quarrying
63,877	47,749	2,077	45,672	16,128	2,778	13,350	0.2	11	11.5	737	2	303	20	412	Manufacturing
1,488	918	11	907	570	67	503	-	-	4.7	7	-	2	-	5	Electricity, Gas & Water Supply
115,540	103,954	465	103,489	11,586	2,790	8,796	0.1	13	7.1	826	3	664	2	157	Construction
87,440	73,027	4,517	68,510	14,413	4,596	9,817	0.1	11	2.4	212	3	107	8	94	Wholesale, Retail Trades, Hotels & Restaurants
13,807	7,646	1,254	6,392	6,161	1,129	5,032	0.1	2	13.0	180	79	33	10	58	Transport, Storage & Communications
19,573	8,388	862	7,526	11,185	3,385	7,800	0.1	2	2.8	54	-	21	9	24	Finance, Insurance, Real Estate and Business Activities
54,526	43,090	4,547	38,543	11,436	4,783	6,653	0.02	1	2.8	153	2	57	5	89	Community, Social and Personal Activities
360,906	289,074	13,747	275,327	71,832	19,569	52,263	0.1	40	6.1	2,190	89	1,190	59	852	Total

Note: the data represent persons covered by social insurance only.

Source: General Organisation for Social Insurance.

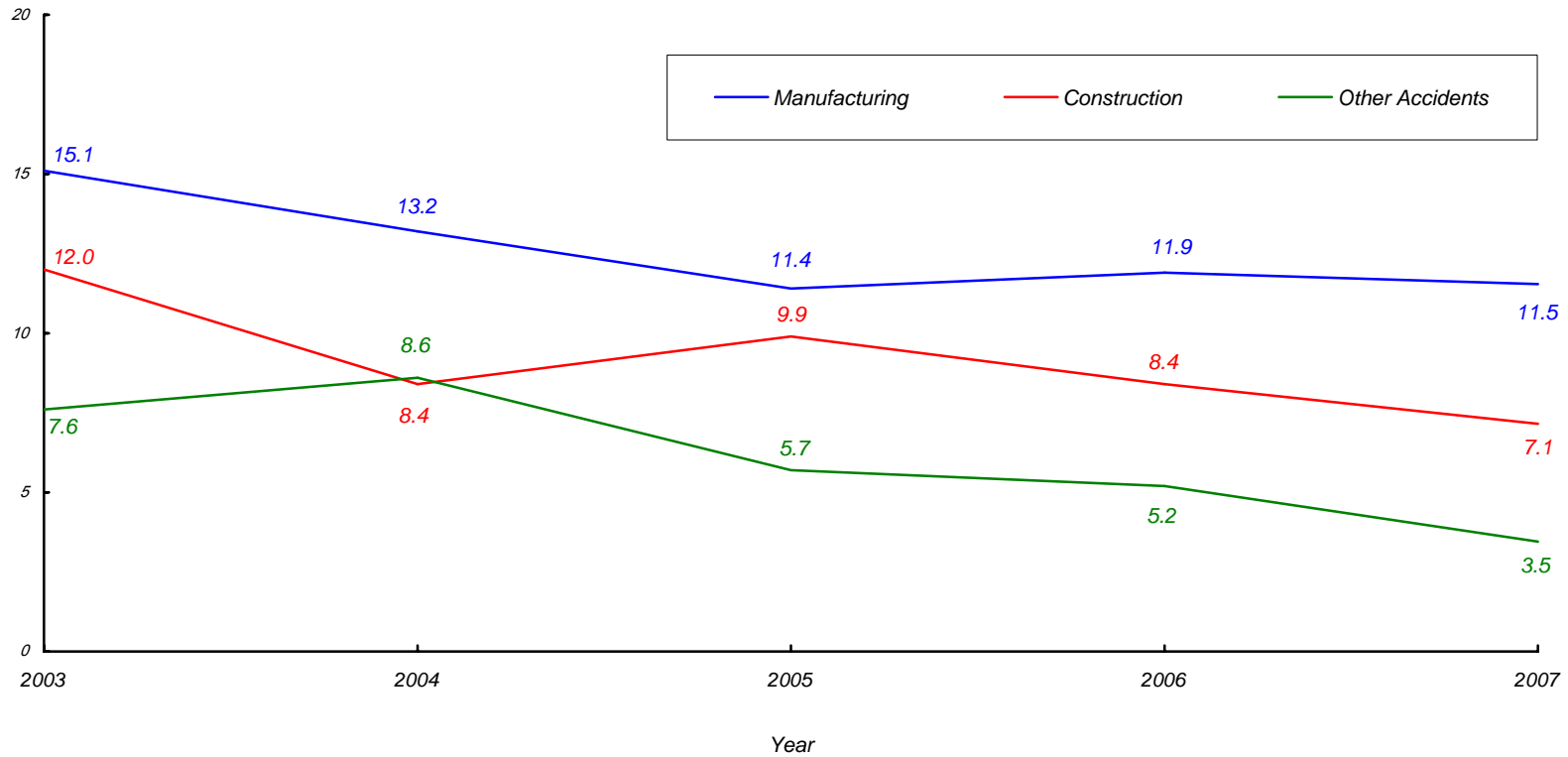
Table 7.26
2007 **1000**
Occupational Injuries and Deaths Rates Per 1000 Insured Persons by Nationality and Division of Economic Activity 2007

<i>Division of Economic Activity</i>	<i>2007</i>		<i>2006</i>		<i>2005</i>		<i>2004</i>		<i>2003</i>	
	<i>Non-Bah</i>	<i>Bah</i>	<i>Non-Bah</i>	<i>Bah</i>	<i>Non-Bah</i>	<i>Bah</i>	<i>Non-Bah</i>	<i>Bah</i>	<i>Non-Bah</i>	<i>Bah</i>
Agriculture & Fishing	0.7	56.4	2.1	85.0	1.7	75.5	1.7	90.4	1.7	99.4
Manufacturing	6.4	26.8	6.2	29.8	6.2	24.7	7.2	26.5	7.5	29.8
Electricity, Gas & Water Supply	2.2	8.8	8.8	15.2	15.0	16.8	13.7	12.6	12.3	33.6
Construction	6.4	13.7	7.4	17.1	8.8	16.2	7.5	13.4	10.2	20.2
Wholesale, Retail Trades, Hotels & Restaurants	1.5	7.1	1.5	13.7	2.1	11.7	2.2	10.6	3.0	11.6
Transport, Storage & Communications	14.6	11.0	17.9	19.7	22.3	13.2	17.1	20.1	15.4	16.5
Finance, Insurance, Real Estate and Business Activities	2.5	3.0	2.5	4.1	1.7	5.3	4.7	5.0	4.6	4.5
Community , Social and Personal Activities	1.4	8.2	1.9	16.1	1.7	16.9	2.0	14.4	3.2	18.1
Total	4.4	12.7	49.7	18.2	56.8	16.1	5.8	16.5	7.1	19.4

Note: the data represent persons covered by social insurance only.

Source: General Organisation for Social Insurance.

Figure 7.4
2007 - 2003 **1000**
Top Occupational Accidents Rates Per 1000 Insured Persons 2003 - 2007



Note: the data represent persons covered by social insurance only.

ملاحظة : البيانات تمثل فقط الخاضعين لنظام التأمينات الاجتماعية .

Reference: Table 7.25

مرجع: جدول 7.25