

General Statistics for Salmaniya Medical Complex

Contents

	<i>Page</i>
<i>Introduction</i>	<i>i</i>
<i>Out-Patient Visits</i>	<i>i</i>
<i>Accident and Emergency Visits</i>	<i>ii</i>
<i>Day Case Unit</i>	<i>ii</i>
<i>Hospital Admissions</i>	<i>ii</i>
<i>Departments Activities</i>	
<i>Medical</i>	<i>ii</i>
<i>Surgical</i>	<i>ii</i>
<i>Orthopedics Surgery</i>	<i>iii</i>
<i>Plastic Surgery/Burns</i>	<i>iii</i>
<i>Pediatrics</i>	<i>iii</i>
<i>Obstetrics/Gynaecology</i>	<i>iii</i>
<i>Ear, Nose and Throat</i>	<i>iii</i>
<i>Ophthalmology</i>	<i>iii</i>
<i>Dental</i>	<i>iii</i>
<i>Neurosciences</i>	<i>iv</i>
<i>Nephrology</i>	<i>iv</i>
<i>Intensive Care Unit</i>	<i>iv</i>
<i>Special Care Baby Unit</i>	<i>iv</i>

Introduction

Salmaniya Medical Complex (SMC), a multi specialty Secondary and Tertiary health care facility which provides emergency, outpatient and inpatient care to all citizens and residents in the Kingdom. In order to provide the best health care to patients SMC's Clinics are supported by Radiology and Laboratory services for diagnostic purposes, Physiotherapy, Pharmacy, and Radiotherapy provide the therapeutic services to patients.

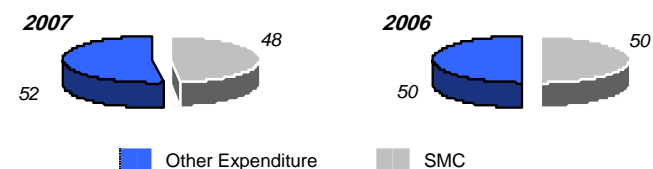
During the last decade the hospital had witnessed a remarkable evolution in the size and quality of the services. The buildings have been expanded, new services introduced and new sophisticated medical equipment has contributed in the diagnosis, treatment and rehabilitation of patients.

Selected resources at Salmaniya Medical Complex **Table 1**

Description	2007	2006
Beds	895	891
Physicians	625	566
Dentists	6	6
Nurses	1,677	1,624
Allied Health	425	414
Outpatient Visits	518,287	484,362
Inpatients*	46,738	48,377

* Including Special Care Baby Unit (SCBU)

SMC Expenditure as % of The Total MOH Expenditure* **Figure 1**



* Including Maternity Unit at SMC

Out-Patient Visits

A total number of 518,287 patient visits were recorded at all clinics in the year 2007. Among this 264,030 (50.9%) were Male Patient visits and the remaining 254,257 (49.1%) were female patients. In Ophthalmology and E.N.T Clinics a total number of 4,925 and 5,500, respectively were seen as "Emergency Cases". The Medical Department recorded the highest number of Patient's Visits (42,130 – 19.9%) of the total visits.

Outpatients Clinics **Table 2**

Description	2007	2006
Outpatients Clinics	212,151	181,047
Accident & Emergency	306,136	303,315

Accident and Emergency (A&E) Visits

In the year 2007 a total number of 306,136 patients were treated in A&E clinics. There were 237,187 (77.5%) Bahrainis and the remaining 68,949 (22.5%) were Non-Bahrainis. A total number of 5,852 Road Traffic Accident cases and 1,920 Industrial Accidents were treated. A total number of 472 staffs working in Ministry of Health were also treated at A&E in the year 2007.

Day Case Unit

A total number of 8,915 patients were booked for DCU Procedures. The number patients booked as Elective was 6,239 (70%) and the remaining 2,676 (30%) patients were from Accident & Emergency. Among the Elective Patients only 5,515 (88%) patients attended the DCU while the remaining 723 either cancelled their appointment or did not attend. A total number of 21 beds were available in 2007 for DCU services.

Hospital Admissions

The Medical Record Department has recorded 46,738 admissions in 2007 including Special Care Baby Unit (SCBU). There were 37,594 (80.4%) Bahrainis and the remaining 9,144 (19.6%) were Non-Bahrainis. There were 20,784 (44.5%) male and 25,954 (55.5%) female patients.

A total number of 35,935 (77.1%) patients were admitted through Accident & Emergency, 9,698 (20.8%) patients through Out Patients Clinics (O.P.D) and the remaining 988 (2.1%) were through Limited Private Practice (LPP) and other Private Clinics (see table 3).

In 2007 SMC's Bed Strength was 895 which included 25 beds in Special Care Baby Unit (SCBU). Other Beds included 21 beds in Day Case Unit (DCU). The Bed Occupancy rate was 75.9% and the Average Length of Stay (L.O.S.) for 2007 was 5.3 days.

A total number of 46,621 patients were discharged including the SCBU for a total of 250,516 inpatient days. Based on the patients' discharges details, there were 1,004 deaths at SMC in 2007.

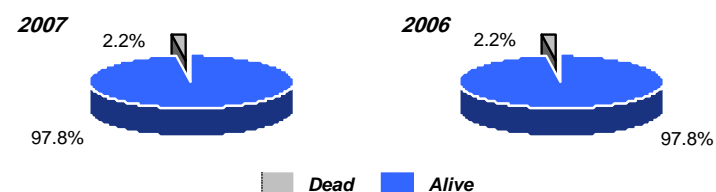
Discharges by Source of Admission (in %)

Table 3

Description	2007	2006	2005
Outpatients Clinics	20.8	18.7	19.1
Accident & Emergency	77.1	77.9	77.1
Limited Private Practice & Private Clinics	2.1	3.4	3.8

SMC Discharges by Discharge status

Figure 2



Department's Activities

Medical

A total number of 42,130 (19.8%) patients' visits to various Medical Outpatient Clinics were registered in 2007. Among this 17,389 (42.3%) were male patient's visits and the remaining 24,291 (57.7%) were female patient's visits. Dermatology clinic had the highest number of patients' visits (11,171) which is nearly 27% out of the medical patients and Cardiology had the next highest number of visits (9,708, 23%).

220 beds were allocated for Medical Department in 2007. A total number of 8,286 patients were admitted. A total number of 8,270 patients were discharged from Medical Department for 57,366 inpatient days, beds occupancy rate was 64.3% and the average L.O.S** was 6.2 days. 401 deaths in 2007 were registered under the care of Medical Department.

Surgical

A total number of 20,238 (9.5%) patients' visits were registered in the year 2007. Among this 11,308 were male patient visits and the remaining 8,930 were female patient's visits. General Surgery Clinics had the highest number of visits (8,533).

It had 136 beds. A total number of 5,968 patients were admitted and a total number of 5,968 patients were discharged for 37,720 inpatient days. The bed occupancy rate was 76.0% and the average L.O.S was 6.3 days. There were 31 deaths in 2007 under the care of Surgical Department.

Orthopedics Surgery

A total number of 22,861 (10.7%) patient's visits were registered in the year 2007. Among this 11,563 (50.6%) were male patient's visits and the remaining 11,298 (49.4%) were female patient's visits.

It had 62 beds and a total number of 2,455 patients were admitted. A total number of 2,464, patients were discharged for 19,743 inpatient days and the bed occupancy rate was 87.2%. The average L.O.S was 8.0 days. There were 18 deaths in 2007, under the care of Orthopedic Department.

Plastic Surgery / Burns

A total number of 2,215 (1.0%) patient visits were registered in the year 2007, among this 1,260 (56.9%) were male patient's visits and the remaining 955 (43.1%) were female patient's visits.

It had 17 beds and a total number of 543 patients were admitted in 2007. A total number of 577 patients were discharged for 4,443 inpatient days. The bed occupancy rate was 71.6% (for ward 206) and the average L.O.S was 8.0 days. 5 deaths were registered under the care of Burn/Plastic Surgery Department.

Pediatrics

A total number of 22,141 (10.4%) patient visits were registered in the year 2006. Among this 11,715 (52.9%) were male patient's visits and the remaining 10,426 (47.1%) were female patient's visits.

The Pediatric Department was equipped with 90 (excluding 25 beds in SCBU). A total number of 5,416 patients were admitted and a total number of 5,446 patients were discharged for 22,685 inpatient days. The bed occupancy rate was 69.1% and the average L.O.S was 4.2 days. There were 28 deaths in 2007, under the care of Pediatric Department

Obstetrics / Gynecology

A total number of 23,054 (10.9%) patient's visits were registered in 2007 both in Antenatal and Gynecology Clinics.

It had 146 beds and a total number of 12,077 patients were admitted in 2007. A total number of 12,045 patients were discharged for 39,660 inpatient days. The bed occupancy rate was 74.4% and the average L.O.S was 3.3 days. There were 2 deaths in 2007 under the care of the Obstetrics & Gynecology Department.

Ear, Nose and Throat

A total number of 27,261 (12.8%) patient's visits were registered in the year 2007. Among this 14,336 (52.6%) were male patient's visits and the remaining 12,925 (47.4%) were female patient's visits.

It had 36 beds and a total number of 3,120 patients were admitted. A total number of 3,106 patients were discharged for 9,268 inpatient days. The bed occupancy rate was 70.5% and the average L.O.S was 3.0 days. 3 deaths was registered under the care of E.N.T. Department.

Ophthalmology

A total number of 27,118 (12.8%) patient visits were registered in the year 2006. Among this 14,477 (53.4%) were male patient's visits and the remaining 12,641 (46.4%) were female patient's visits.

It has 22 beds. A total number of 1,320 patients were admitted. A total number of 1,310 patients were discharged for 6,172 inpatient days, beds occupancy rate was 76.9% and the average L.O.S as 4.7 days.

Dental

A total number of 6,359 (2.9%) patient visits were registered in 2007. Among this 2,880 (45.3%) were male patient's visits and the remaining 3,479 (54.7%) were female patient's visits.

2 beds were specified for dental inpatients and a total number of 325 patients were admitted in 2007. A total number of 323 patients were discharged with 1,688 inpatient days. The Average L.O.S was 5.2 days. 4 deaths was registered under the care of Dental Department.

Oncology

A total number of 7,488 (3.5%) patients' visits to Oncology Outpatient Clinics were registered in year 2007. Among this 2,440 (32.6%) were male patient's visits and the remaining 5,048 (67.4%) were female patient's visits.

49 beds (38 adult and 11 pediatric beds) were allocated for Oncology Department in 2007. A total number of 3,004 adult patients were admitted in 2007. A total number of 3,014 patients were discharged for a total number of 22,042 inpatient days. The bed occupancy rate was 123.2% and the average L.O.S was 7.3 days. 165 deaths in 2007 were registered under the care of Oncology Department.

Neurosciences

A total number of 8,084 (3.8%) patients' visits to Neurosciences Outpatient Clinics were registered in 2007. Among this 3,608 (44.6%) were male patient's visits and the remaining 4,476 (55.4%) were female patient's visits.

44 beds were allocated for Neuroscience Department in 2007. A total number of 2,127 patients were admitted and a total number of 2,171 patients were discharged for a total of 16,997 inpatient days. The bed occupancy rate was 105.8% and the average L.O.S** was 7.8 days. 117 deaths in 2007 were registered under the care of Neuroscience Department.

Nephrology

A total number of 3,202 (52.0%) patients' visits to Neurosciences Outpatient Clinics were registered in 2007. Among this 1,537 (48.0%) were male patient's visits and the remaining 1,665 (55.4%) were female patient's visits.

19 beds were allocated for Neuroscience Department in 2007. A total number of 1,032 patients were admitted and a total number of 1,056 patients were discharged for a total of 8,916 inpatient days. The bed occupancy rate was 128.6% and the average L.O.S** was 8.4 days. 70 deaths in 2007 were registered under the care of Nephrology Department.

Intensive Care Unit

The Intensive Care unit has 19 beds. A total number of 222 patients were admitted in 2007. While 94 patients were discharged for a total of 1,286 inpatient days, the bed occupancy rate was 18.5%. The average L.O.S was 13.7 days. There were 83 deaths in 2007 under the care of ICU Ward. (Not that the above mentioned figures presented those patients who were admitted and discharged directly into and from ICU. Patients also transferred directly from and to ICU from all specialty wards).

Special Care Baby Unit

The SCBU has 25 beds and equipped with highly sophisticated equipments to take care of new born and premature babies with complications. A total number of 843 newborn and premature babies were admitted (most were due to severe congenital malformation or premature births).

A total number of 797 patients were discharged with 8,255 inpatient days and the average L.O.S was 10.4 days. The bed occupancy rate was 90.5%.