

Contents

Beds by Department and Specialty 2003 – 2007	Table 9.1, page 3	2007 - 2003	
Bed Utilization 2007	Table 9.2, page 4		2007
Bed Utilization by Department 2003 - 2007	Table 9.3, page 6	2007 - 2003	
Discharges by Admission Classification, Nationality and Sex 2007	Table 9.4, page 10	2007	
Admissions and Discharges by Department, Days of the Week and Sex 2007	Table 9.5, page 11	2007	
Admissions and Discharges by Days of the Week 2007	Figure 9.1, page 12	2007	
Discharges (Alive and Dead) by Age Groups, Nationality and Sex 2007	Table 9.6, page 13	2007	()
Discharges (Alive and Dead) by Age Groups and Nationality 2007	Figure 9.2, page 14	2007	()
Discharges (Alive and Dead) by Geographical Region, Nationality and Sex 2007	Table 9.7, page 15	2007	()
Discharges (Alive and Dead) by Source of Admission, Nationality and Sex 2007	Table 9.8, page 16	2007	()
Discharges (Alive and Dead) by Source of Admission 2007	Figure 9.3, page 17	2007	()
Discharges (Alive and Dead) by Marital Status, Nationality and Sex 2007	Table 9.9, page 18	2007	()
Discharges (Alive and Dead) by Nationality and Sex 2007	Table 9.10, page 19	2007	()
Discharges (Alive and Dead) by Principal Diagnosis, Nationality and Sex 2007	Table 9.11, page 20	2007	()
Discharges (Alive and Dead) by Principal Diagnosis and Age Groups 2007	Table 9.12, page 22	2007	()
Discharges by Discharge Status, Nationality and Department 2007	Table 9.13, page 24	2007	
Discharges, Days of Care and Average Length of Stay by Principal Diagnosis, Sex and Age Groups 2007	Table 9.14, page 25	2007	
Discharges by The Ten Leading Diagnosis 2007	Figure 9.4, page 40	2007	
Discharges (Pre – Post) Operation Days by Department and Sex 2007	Table 9.15, page 41	2007	()
Number of Anaesthesia Cases at Ministry of Health by Type of Anaesthesia 2003 - 2007	Table 9.16, page 42	2007 - 2003	
Deaths by Principal Diagnosis, Length of Stay, Nationality and Sex 2007	Table 9.17, page 43	2007	
Deaths by Principal Diagnosis and Nationality 2007	Figure 9.5, page 55	2007	
Out-Patient Visits by Department, Nationality and Sex 2007	Table 9.18, page 56	2007	
Out-Patient Visits by Department 2003 - 2007	Table 9.19, page 57	2007 - 2003	
Out-Patient Visits by Department 2007	Figure 9.6, page 58	2007	
Laboratory Tests by Source of Specimens 2007	Table 9.20, page 59	2007	
Radiology Procedures by Source of Request 2007	Table 9.21, page 60	2007	
Discharges (Alive and Dead) from Special Care Baby Unit by Month and Sex 2007	Table 9.22, page 62	2007	()
Discharges from Special Care Baby Unit by Geographical Region, Nationality and Sex 2007	Table 9.23, page 63	2007	
Surgical Operations and Procedures at Main Operation Theatre by Specialty 2003 - 2007	Table 9.24, page 64	2007 - 2003	
Endoscopies Procedures 2003 - 2007	Table 9.25, page 65		2007 - 2003

المحتويات

Table 9.1
2007 - 2003
Beds by Department and Specialty 2003 - 2007

<i>Department</i>	<i>2007</i>	<i>2006</i>	<i>2005</i>	<i>2004</i>	<i>2003</i>	
Medical	220	216	202	269	258	
Internal Medicine	139	135	121	216	205	
Chest/Respiratory	17	17	17	17	17	
Cardiology	48	48	48	20	20	
Cardiac Care Unit (CCU)	16	16	16	16	16	
Neurosciences	44	44	44	NA	NA	
Nephrology	19	19	19	NA	NA	
Oncology	49	49	38	NA	NA	
Surgical	136	136	126	158	164	
General Surgery	120	120	110	142	142	
Paediatrics Surgery	16	16	16	16	22	
Orthopedic Surgery & Fracture	62	62	62	64	58	
Plastic Surgery & Burns	17	17	22	21	21	
Plastic Surgery	NA	NA	5	4	4	
Burns	17	17	17	17	17	
Paediatrics	90	90	92	92	92	
General Paediatrics	67	67	69	69	69	
Infectious Diseases	23	23	23	23	23	
Obstetrics & Gynecology	146	146	146	146	156	
Obstetrics	80	80	80	80	80	
Gynecology	66	66	66	66	76	
E.N.T	36	36	36	35	35	
Ophthalmology	22	26	27	35	35	
Dental	2	2	4	4	4	
Intensive Care Unit (ICU)	19	19	19	11	11	
Adult	11	11	11	NA	NA	
Paediatrics	8	8	8	NA	NA	
Other	33	29	45	40	40	
Day Case Unit	21	17	17	18	18	
Private Ward	12	12	28	22	22	
Total	895	891	882	875	874	
Other Beds						
Accident & Emergency	84	
Neonatal / Special Care Baby Unit	25	25	45	45	45	/

Note: Beds were distributed according to the departmental need.

Table 9.2
2007
Bed Utilization 2007

<i>SCBU</i>	<i>Total</i>	¹ <i>Private Ward</i>	<i>Intensive Care Unit</i>	<i>Nephrology</i>	<i>Neuro-Sciences</i>	<i>Oncology</i>	<i>Dental</i>	<i>Ophthalmology</i>	<i>E.N.T.</i>	<i>Paediatrics</i>	<i>Obs. & Gyne.</i>	<i>Plastic Surg. & Burn</i>	<i>Orthop Surg. & Fracture</i>	<i>Surgery</i>	<i>Medical</i>	<i>Description</i>
843	45,895	541	222	1,032	2,127	3,004	325	1,320	3,120	5,416	12,077	543	2,455	5,968	8,286	Total admissions
797	45,824	1,455	94	1,056	2,171	3,014	323	1,310	3,106	5,446	12,045	557	2,464	5,968	8,270	Total discharges
25	874	12	19	19	44	49	2	22	36	90	146	17	62	136	220	No. of beds
9,125	319,010	4,380	6,935	6,935	16,060	17,885	730	8,030	13,140	32,850	53,290	6,205	22,630	49,640	80,300	Bed days available
8,230	241,235	7,009	1,281	8,905	16,850	21,999	1,687	6,149	9,167	22,532	39,407	4,430	19,724	37,638	51,466	Patient-days overnight
25	1,026	7	5	11	147	43	1	23	101	153	253	13	19	82	175	> Patient days < 1 day
8,255	242,261	7,016	1,286	8,916	16,997	22,042	1,688	6,172	9,268	22,685	39,660	4,443	19,743	37,720	51,641	Total Patient days

Note: Discharges by department could be different from other tables that base on the principle diagnosis of disease.

(Cont'd) Table 9.2 ()
2007
Bed Utilization 2007

SCBU	Total	¹ Private Ward ¹	Intensive Care Unit	Nephrology	Neuro-Sciences	Oncology	Dental	Ophthalmology	E.N.T.	Paediatrics	Obs. & Gyne.	Plastic Surg. & Burn	Orthop Surg. & Fracture	Surgery	Medical	Description
90.5	75.9	160.2	18.5	128.6	105.8	123.2	231.2	76.9	70.5	69.1	74.4	71.6	87.2	76.0	64.3	Bed occupancy rate
31.9	52.4	121.3	4.9	55.6	49.3	61.5	161.5	59.5	86.3	60.5	82.5	32.8	39.7	43.9	37.6	Turnover rate
1.1	1.7	-1.8	60.1	-1.9	-0.4	-1.4	-3.0	1.4	1.2	1.9	1.1	3.2	1.2	2.0	3.5	² Turnover interval ²
2.3	125.7	1.5	0.6	2.8	5.8	8.2	0.9	3.6	8.5	14.8	33.1	1.5	6.7	16.4	22.7	Average daily admission
2.2	125.5	4.0	0.3	2.9	5.9	8.3	0.9	3.6	8.5	14.9	33.0	1.5	6.8	16.4	22.7	Average daily discharge
10.4	5.3	4.8	13.7	8.4	7.8	7.3	5.2	4.7	3.0	4.2	3.3	8.0	8.0	6.3	6.2	Average length of stay

¹ Private ward 410, 413: data in this column already counted within the related departments except number of beds & bed days available .

: 413 410

¹

² Turnover Interval: Negative sign indicates that the concerned department is utilising more beds than allocated .

²

Table 9.3
2007 - 2003
Bed Utilization by Department 2003 - 2007

<i>Department / Unit</i>	<i>2007</i>	<i>2006</i>	<i>2005</i>	<i>2004</i>	<i>2003</i>	<i>/</i>
Medical						
Total Admissions	8,286	9,326	9,886	12,575	11,383	
Total Discharges	8,270	9,317	9,826	12,568	11,409	
No.of beds	220	216	221	269	258	
Total Patient days	51,641	53,787	61,235	94,925	90,403	
Bed occupancy rate	64.3	68.2	75.9	96.4	96.0	
Average length of stay	6.2	5.8	6.2	7.6	7.9	
Surgical						
Total Admissions	5,968	5,990	5,967	6,777	6,615	
Total Discharges	5,968	6,027	5,987	6,836	6,691	
No.of beds	136	136	126	158	164	
Total Patient days	37,720	40,546	41,396	51,485	49,818	
Bed occupancy rate	76.0	81.7	90.0	89.0	83.2	
Average length of stay	6.3	6.7	6.9	7.5	7.4	
Orthopedic Surgery & Fracture						
Total Admissions	2,455	2,525	2,538	2,284	2,082	
Total Discharges	2,464	2,542	2,544	2,277	2,083	
No.of beds	62	62	62	64	58	
Total Patient days	19,743	19,713	19,718	20,454	20,040	
Bed occupancy rate	87.2	87.1	87.1	87.3	94.7	
Average length of stay	8.0	7.8	7.8	9.0	9.6	

*Note: this table provides information by department and it's units,
where Table 9.5 indicates admissions and discharges .*

9.5

(Cont'd) Table 9.3 ()
2007 - 2003
Bed Utilization by Department 2003 - 2007

<i>Department / Unit</i>	<i>2007</i>	<i>2006</i>	<i>2005</i>	<i>2004</i>	<i>2003</i>	<i>/</i>
Plastic Surgery & Burns						
Total Admissions	543	571	584	467	379	
Total Discharges	557	589	593	479	388	
No.of beds	17	17	22	21	21	
Total Patient days	4,443	4,719	5,477	4,369	4,447	
Bed occupancy rate	71.6	76.1	68.2	56.8	58.0	
Average length of stay	8.0	8.0	9.2	9.1	11.5	
Obstetrics/Gynecology						
Total Admissions	12,077	12,131	12,358	12,060	11,442	
Total Discharges	12,045	12,160	12,350	12,075	11,433	
No.of beds	146	146	146	146	156	
Total Patient days	39,660	40,684	44,404	44,137	41,810	
Bed occupancy rate	74.4	76.3	83.3	82.6	73.4	
Average length of stay	3.3	3.3	3.6	3.7	3.7	
Paediatrics						
Total Admissions	5,416	5,867	4,580	4,447	4,452	
Total Discharges	5,446	5,886	4,601	4,463	4,441	
No.of beds	90	90	92	92	92	
Total Patient days	22,685	26,129	20,910	24,290	25,773	
Bed occupancy rate	69.1	79.5	62.3	72.1	76.8	
Average length of stay	4.2	4.4	4.5	5.4	5.8	
E.N.T						
Total Admissions	3,120	3,195	3,299	3,310	3,206	
Total Discharges	3,106	3,191	3,294	3,313	3,190	
No.of beds	36	36	36	35	35	
Total Patient days	9,268	10,010	10,334	10,932	11,034	
Bed occupancy rate	70.5	76.2	78.6	85.3	86.4	
Average length of stay	3.0	3.1	3.1	3.3	3.5	

(Cont'd) Table 9.3 ()
2007 - 2003
Bed Utilization by Department 2003 - 2007

<i>Department / Unit</i>	<i>2007</i>	<i>2006</i>	<i>2005</i>	<i>2004</i>	<i>2003</i>	<i>/</i>
Ophthalmology						
Total Admissions	1,320	1,183	1,074	1,219	1,296	
Total Discharges	1,310	1,185	1,073	1,219	1,298	
No.of beds	22	26	27	35	35	
Total Patient days	6,172	5,499	5,888	6,458	8,028	
Bed occupancy rate	76.9	57.9	59.7	50.4	62.8	
Average length of stay	4.7	4.6	5.5	5.3	6.2	
Dental						
Total Admissions	325	384	342	302	325	
Total Discharges	323	404	350	309	324	
No.of beds	2	2	4	4	4	
Total Patient days	1,688	2,198	1,866	1,628	1,611	
Bed occupancy rate	231.2	301.1	127.8	111.2	110.3	
Average length of stay	5.2	5.4	5.3	5.3	5.0	
Oncology						
Total Admissions	3,004	2,788	2,471	NA	NA	
Total Discharges	3,014	2,830	2,539	NA	NA	
No.of beds	49	49	38	NA	NA	
Total Patient days	22,042	18,844	18,139	NA	NA	
Bed occupancy rate	123.2	105.4	130.8	NA	NA	
Average length of stay	7.3	6.7	7.1	NA	NA	
Neuro Sciences						
Total Admissions	2,127	2,243	2,604	NA	NA	
Total Discharges	2,171	2,261	2,688	NA	NA	
No.of beds	44	44	44	NA	NA	
Total Patient days	16,997	14,993	18,434	NA	NA	
Bed occupancy rate	105.8	93.4	115	NA	NA	
Average length of stay	7.8	6.6	6.9	NA	NA	

(Cont'd) Table 9.3 ()
2007 - 2003
Bed Utilization by Department 2003 - 2007

<i>Department / Unit</i>	<i>2007</i>	<i>2006</i>	<i>2005</i>	<i>2004</i>	<i>2003</i>	<i>/</i>
Nephrology						
Total Admissions	1,032	1,102	NA	NA	NA	
Total Discharges	1,056	1,101	NA	NA	NA	
No.of beds	19	19	NA	NA	NA	
Total Patient days	8,916	8,539	NA	NA	NA	
Bed occupancy rate	128.6	123.1	NA	NA	NA	
Average length of stay	8.4	7.8	NA	NA	NA	
Intensive Care Unit						
Total Admissions	222	224	202	223	204	
Total Discharges	94	99	118	109	122	
No.of beds	19	19	19	11	11	
Total Patient days	1,286	1,336	1,992	1,545	1,755	
Bed occupancy rate	18.5	19.3	28.7	38.4	43.7	
Average length of stay	13.7	13.5	16.9	14.2	14.4	
Private Ward						
Total Admissions	541	645	657	622	604	
Total Discharges	1,455	1,579	1,465	1,347	1,228	
No.of beds	12	12	28	22	22	
Total Patient days	7,016	7,065	7,095	6,517	6,356	
Bed occupancy rate	160.2	161.3	69.4	80.9	79.2	
Average length of stay	4.8	4.5	4.8	4.8	5.2	
Total Admissions	45,895	47,529	45,885	43,664	41,384	
Total Discharges	45,824	47,592	45,963	43,648	41,379	
No.of beds	874	874	865	857	856	
Total Patient days	242,261	246,997	249,793	260,223	254,719	
Bed occupancy rate	75.9	77.4	79.1	83.0	81.5	
Average length of stay	5.3	5.2	5.4	6.0	6.2	
Special Care Baby Unit						
Total Admissions	843	848	948	979	1,001	
Total Discharges	797	835	937	972	982	
No.of beds	25	25	45	45	45	
Total Patient days	8,255	9,856	10,527	12,137	11,096	
Bed occupancy rate	90.5	108.0	64.1	73.7	67.6	
Average length of stay	10.4	11.8	11.2	12.5	11.3	

Table 9.4
2007
Discharges by Admission Classification, Nationality and Sex 2007

<i>Admission Classification</i>	<i>Total</i>			<i>Non-Bahraini</i>			<i>Bahraini</i>			
	<i>Total</i>	<i>Female</i>	<i>Male</i>	<i>Total</i>	<i>Female</i>	<i>Male</i>	<i>Total</i>	<i>Female</i>	<i>Male</i>	
No previous admission	34,744	19,411	15,333	8,063	3,579	4,484	26,681	15,832	10,849	
Same condition less or equal to 3 months	4,134	1,862	2,272	257	147	110	3,877	1,715	2,162	3
Same condition more than 3 months	953	449	504	41	23	18	912	426	486	3
Other condition less or equal to 3 months	5,057	3,107	1,950	587	359	228	4,470	2,748	1,722	3
Other condition more than 3 months	1,733	1,049	684	170	104	66	1,563	945	618	أكثر من 3 شهور

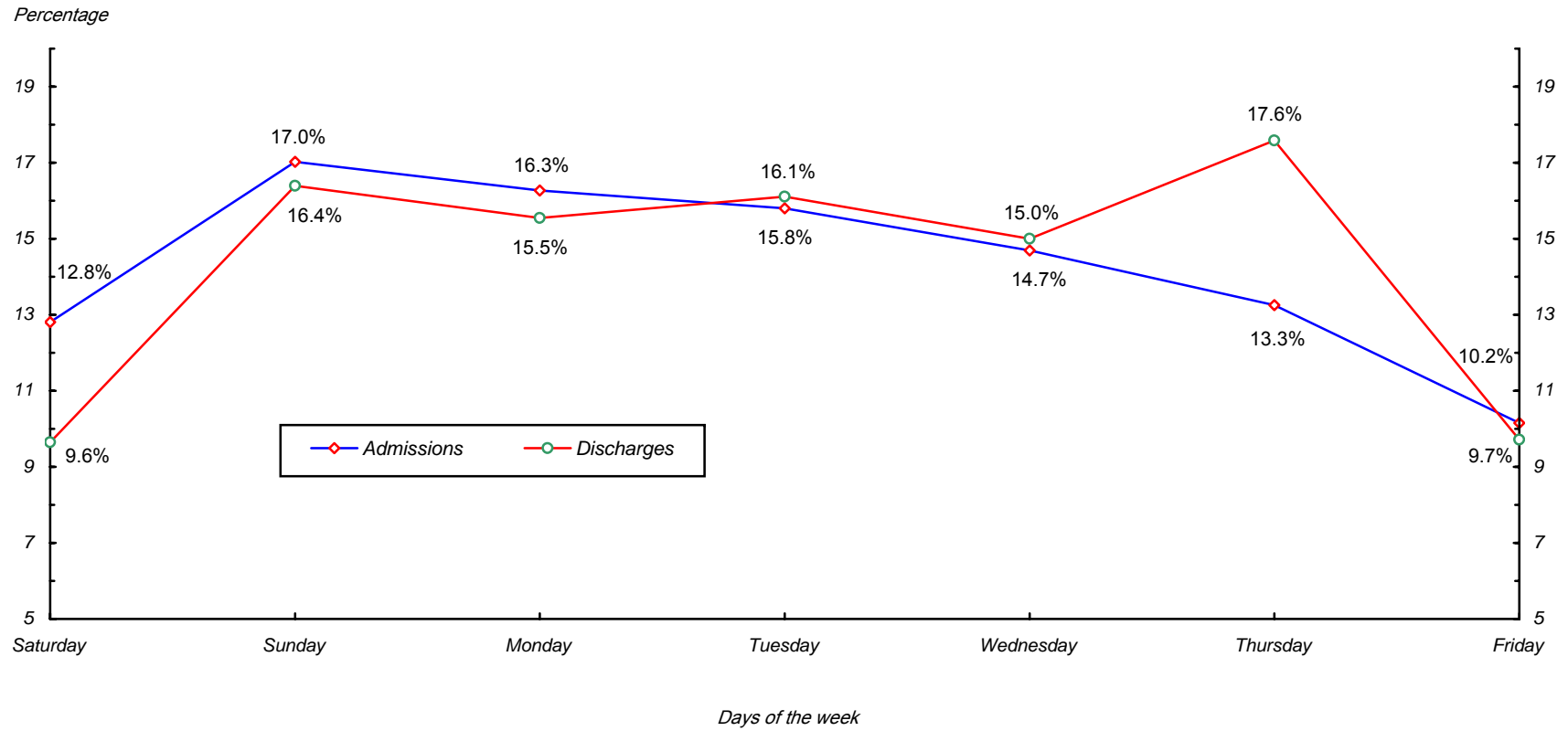
Table 9.5

2007

Admissions and Discharges by Department, Days of the Week and Sex 2007

Total		Fri		Thurs		Wed		Tues		Mon		Sun		Sat		Sex	Department
Disch.	Adm.	Disch.	Adm.	Disch.	Adm.	Disch.	Adm.	Disch.	Adm.	Disch.	Adm.	Disch.	Adm.	Disch.	Adm.		
5060	5084	402	691	905	773	824	740	738	758	811	742	923	764	457	616	Male	
3210	3202	253	369	624	459	532	482	483	478	533	501	571	506	214	407	Female	Medical
3841	3837	343	280	611	506	599	630	557	709	666	620	653	577	412	515	Male	
2127	2131	195	138	305	241	318	302	341	397	357	368	353	387	258	298	Female	Surgical
1604	1597	125	118	263	202	194	182	352	355	226	238	251	257	193	245	Male	
860	858	52	68	168	128	135	119	136	144	132	143	183	174	54	82	Female	Orthopedic Surgery & Fracture
299	292	28	38	43	49	42	43	44	33	73	51	44	36	25	42	Male	
258	251	27	20	41	26	43	50	32	26	42	53	46	39	27	37	Female	Plastic Surgery & Burns
-	-	-	-	-	-	-	-	-	-	-	-	-	-	-	-	Male	
12045	12077	1372	1272	2129	1453	1717	1707	1910	1904	1737	1903	1955	2116	1225	1722	Female	Obstetrics & Gynecology
3112	3082	318	360	526	383	427	419	580	423	491	618	494	502	276	377	Male	
2334	2334	214	247	413	338	361	310	447	320	354	441	356	380	189	298	Female	Pediatrics
1810	1820	227	98	318	201	302	335	330	283	220	351	200	422	213	130	Male	
1296	1300	150	44	250	185	224	249	236	232	151	206	155	291	130	93	Female	E.N.T.
741	749	57	46	153	78	109	125	115	129	111	113	137	139	59	119	Male	
569	571	48	34	120	55	79	91	89	98	73	104	104	98	56	91	Female	Ophthalmology
186	186	22	22	26	26	25	32	26	23	41	26	32	37	14	20	Male	
137	139	8	6	25	21	15	20	25	19	25	25	24	32	15	16	Female	Dental
1678	1651	168	199	304	240	257	253	227	246	273	221	273	282	176	210	Male	
1336	1353	130	152	233	203	208	184	177	211	237	213	244	223	107	167	Female	Oncology
1377	1335	124	182	243	188	204	186	215	188	242	187	205	232	144	172	Male	
794	792	61	104	143	128	106	113	141	107	135	113	123	126	85	101	Female	Neurosciences
529	530	43	54	97	69	76	72	90	79	91	100	88	97	44	59	Male	
527	502	44	47	86	85	83	68	99	72	104	86	79	91	32	53	Female	Nephrology
59	147	7	26	8	19	8	16	7	24	9	25	10	19	10	18	Male	
35	75	10	8	6	8	3	10	3	10	3	19	6	13	4	7	Female	ICU
20,296	20,310	1,864	2,114	3,497	2,734	3,067	3,033	3,281	3,250	3,254	3,292	3,310	3,364	2,023	2,523	Male	
25,528	25,585	2,564	2,509	4,543	3,330	3,824	3,705	4,119	4,018	3,883	4,175	4,199	4,476	2,396	3,372	Female	Total
45,824	45,895	4,428	4,623	8,040	6,064	6,891	6,738	7,400	7,268	7,137	7,467	7,509	7,840	4,419	5,895	Total	
447	474	61	75	83	79	64	69	65	67	67	73	65	66	42	45	Male	
350	369	42	46	74	53	37	59	45	50	45	64	70	52	37	45	Female	Special Care Baby Unit (SCBU)
20,743	20,784	1,925	2,189	3,580	2,813	3,131	3,102	3,346	3,317	3,321	3,365	3,375	3,430	2,065	2,568	Male	
25,878	25,954	2,606	2,555	4,617	3,383	3,861	3,764	4,164	4,068	3,928	4,239	4,269	4,528	2,433	3,417	Female	Grand Total
46,621	46,738	4,531	4,744	8,197	6,196	6,992	6,866	7,510	7,385	7,249	7,604	7,644	7,958	4,498	5,985	Total	

Figure 9.1
2007
Admissions and Discharges By Days of the Week 2007



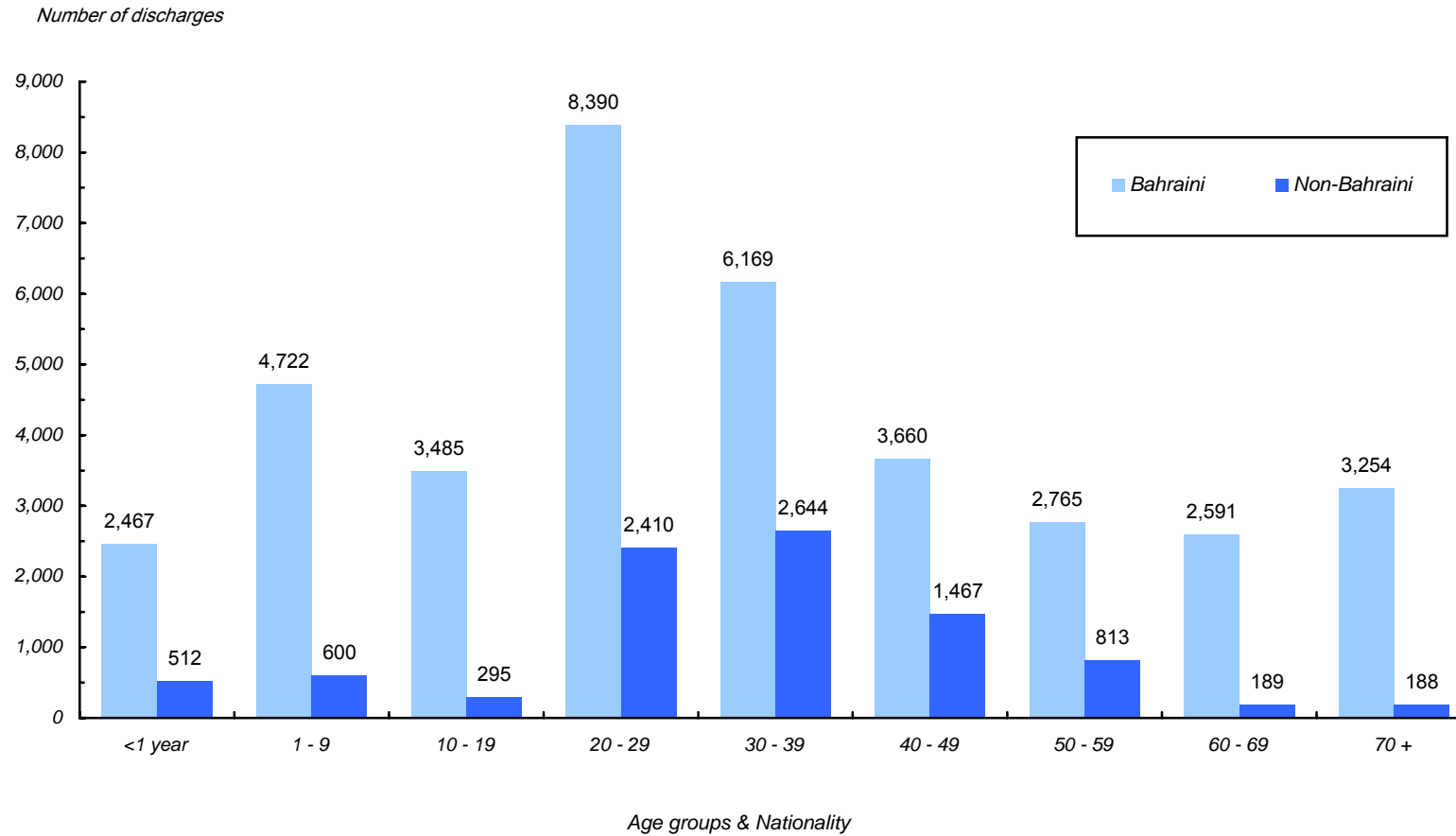
Reference: Table 9.5

9.5 :

Table 9.6
2007 ()
Discharges (Alive and Dead) by Age Groups, Nationality and Sex 2007

<i>Total</i>			<i>Non-Bahraini</i>			<i>Bahraini</i>				() Age Group (Years)
<i>Total</i>	<i>Female</i>	<i>Male</i>	<i>Total</i>	<i>Female</i>	<i>Male</i>	<i>Total</i>	<i>Female</i>	<i>Male</i>		
2,890	1,165	1,725	489	179	310	2,401	986	1,415	Alive	<1 year
89	48	41	23	14	9	66	34	32	Dead	
2,979	1,213	1,766	512	193	319	2,467	1,020	1,447	Total	
5,309	2,150	3,159	597	251	346	4,712	1,899	2,813	Alive	1 - 9
13	7	6	3	2	1	10	5	5	Dead	
5,322	2,157	3,165	600	253	347	4,722	1,904	2,818	Total	
3,761	1,796	1,965	292	192	100	3,469	1,604	1,865	Alive	10 - 19
19	5	14	3	1	2	16	4	12	Dead	
3,780	1,801	1,979	295	193	102	3,485	1,608	1,877	Total	
10,772	7,378	3,394	2,402	1,414	988	8,370	5,964	2,406	Alive	20 - 29
28	7	21	8	-	8	20	7	13	Dead	
10,800	7,385	3,415	2,410	1,414	996	8,390	5,971	2,419	Total	
8,774	5,928	2,846	2,619	1,400	1,219	6,155	4,528	1,627	Alive	30 - 39
39	13	26	25	5	20	14	8	6	Dead	
8,813	5,941	2,872	2,644	1,405	1,239	6,169	4,536	1,633	Total	
5,047	2,786	2,261	1,444	435	1,009	3,603	2,351	1,252	Alive	40 - 49
80	38	42	23	3	20	57	35	22	Dead	
5,127	2,824	2,303	1,467	438	1,029	3,660	2,386	1,274	Total	
3,465	1,508	1,957	779	156	623	2,686	1,352	1,334	Alive	50 - 59
113	36	77	34	8	26	79	28	51	Dead	
3,578	1,544	2,034	813	164	649	2,765	1,380	1,385	Total	
2,602	1,311	1,291	180	67	113	2,422	1,244	1,178	Alive	60 - 69
178	86	92	9	3	6	169	83	86	Dead	
2,780	1,397	1,383	189	70	119	2,591	1,327	1,264	Total	
2,997	1,410	1,587	171	73	98	2,826	1,337	1,489	Alive	70 +
445	206	239	17	9	8	428	197	231	Dead	
3,442	1,616	1,826	188	82	106	3,254	1,534	1,720	Total	
45,617	25,432	20,185	8,973	4,167	4,806	36,644	21,265	15,379	Alive	Grand Total
1,004	446	558	145	45	100	859	401	458	Dead	
46,621	25,878	20,743	9,118	4,212	4,906	37,503	21,666	15,837	Total	

Figure 9.2
2007 ()
Discharges (Alive and Dead) By Age Groups and Nationality 2007



Reference: Table 9.6

9.6 :

جدول 9.7
2007 ()
Discharges (Alive and Dead) by Geographical Region, Nationality and Sex 2007

Total						Dead						Alive						Region
Dead			Alive			Non-Bahraini			Bahraini			Non-Bahraini			Bahraini			
Total	Female	Male	Total	Female	Male	Total	Female	Male	Total	Female	Male	Total	Female	Male	Total	Female	Male	
17	4	13	645	365	280	-	-	-	17	4	13	175	77	98	470	288	182	Hidd
195	91	104	6,220	3,628	2,592	20	10	10	175	81	94	1,230	682	548	4,990	2,946	2,044	Muharraq
220	87	133	9,104	4,813	4,291	70	13	57	150	74	76	4,185	1,973	2,212	4,919	2,840	2,079	Manama
116	60	56	5,106	2,710	2,396	6	1	5	110	59	51	282	118	164	4,824	2,592	2,232	Jidhafs
67	31	36	3,682	2,059	1,623	5	1	4	62	30	32	352	165	187	3,330	1,894	1,436	Northern
85	38	47	4,411	2,513	1,898	9	2	7	76	36	40	478	88	390	3,933	2,425	1,508	Sitra
89	33	56	4,747	2,704	2,043	10	4	6	79	29	50	641	232	409	4,106	2472	1634	Central
72	37	35	2,711	1,589	1,122	5	4	1	67	33	34	270	187	83	2,441	1402	1039	Isa Town
58	27	31	2,419	1,347	1,072	17	7	10	41	20	21	952	442	510	1,467	905	562	Riffa
28	11	17	2,624	1,513	1,111	-	-	-	28	11	17	133	47	86	2,491	1466	1025	Western
-	-	-	76	17	59	-	-	-	-	-	-	60	6	54	16	11	5	Southern
56	27	29	3,742	2,107	1,635	3	3	-	53	24	29	182	132	50	3,560	1975	1585	Hamad Town
1	-	1	130	67	63	-	-	-	1	-	1	33	18	15	97	49	48	Undetermined
1,004	446	558	45,617	25,432	20,185	145	45	100	859	401	458	8,973	4,167	4,806	36,644	21,265	15,379	Total

Percent Distribution (%)

(%)

1.7	0.9	2.3	1.4	1.4	1.4	-	-	-	2.0	1.0	2.8	2.0	1.8	2.0	1.3	1.4	1.2	Hidd
19.4	20.4	18.6	13.6	14.3	12.8	13.8	22.2	10.0	20.4	20.2	20.5	13.7	16.4	11.4	13.6	13.9	13.3	Muharraq
21.9	19.5	23.8	20.0	18.9	21.3	48.3	28.9	57.0	17.5	18.5	16.6	46.6	47.3	46.0	13.4	13.4	13.5	Manama
11.6	13.5	10.0	11.2	10.7	11.9	4.1	2.2	5.0	12.8	14.7	11.1	3.1	2.8	3.4	13.2	12.2	14.5	Jidhafs
6.7	7.0	6.5	8.1	8.1	8.0	3.4	2.2	4.0	7.2	7.5	7.0	3.9	4.0	3.9	9.1	8.9	9.3	Northern
8.5	8.5	8.4	9.7	9.9	9.4	6.2	4.4	7.0	8.8	9.0	8.7	5.3	2.1	8.1	10.7	11.4	9.8	Sitra
8.9	7.4	10.0	10.4	10.6	10.1	6.9	8.9	6.0	9.2	7.2	10.9	7.1	5.6	8.5	11.2	11.6	10.6	Central
7.2	8.3	6.3	5.9	6.2	5.6	3.4	8.9	1.0	7.8	8.2	7.4	3.0	4.5	1.7	6.7	6.6	6.8	Isa Town
5.8	6.1	5.6	5.3	5.3	5.3	11.7	15.6	10.0	4.8	5.0	4.6	10.6	10.6	10.6	4.0	4.3	3.7	Riffa
2.8	2.5	3.0	5.8	5.9	5.5	-	-	-	3.3	2.7	3.7	1.5	1.1	1.8	6.8	6.9	6.7	Western
-	-	-	0.2	0.1	0.3	-	-	-	-	-	-	0.7	0.1	1.1	0.04	0.05	0.03	Southern
5.6	6.1	5.2	8.2	8.3	8.1	2.1	6.7	-	6.2	6.0	6.3	2.0	3.2	1.0	9.7	9.3	10.3	Hamad Town
0.1	-	0.2	0.3	0.3	0.3	-	-	-	0.1	-	0.2	0.4	0.4	0.3	0.3	0.2	0.3	Undetermined

جدول 9.8
2007 ()
Discharges (Alive and Dead) by Source of Admission, Nationality and Sex 2007

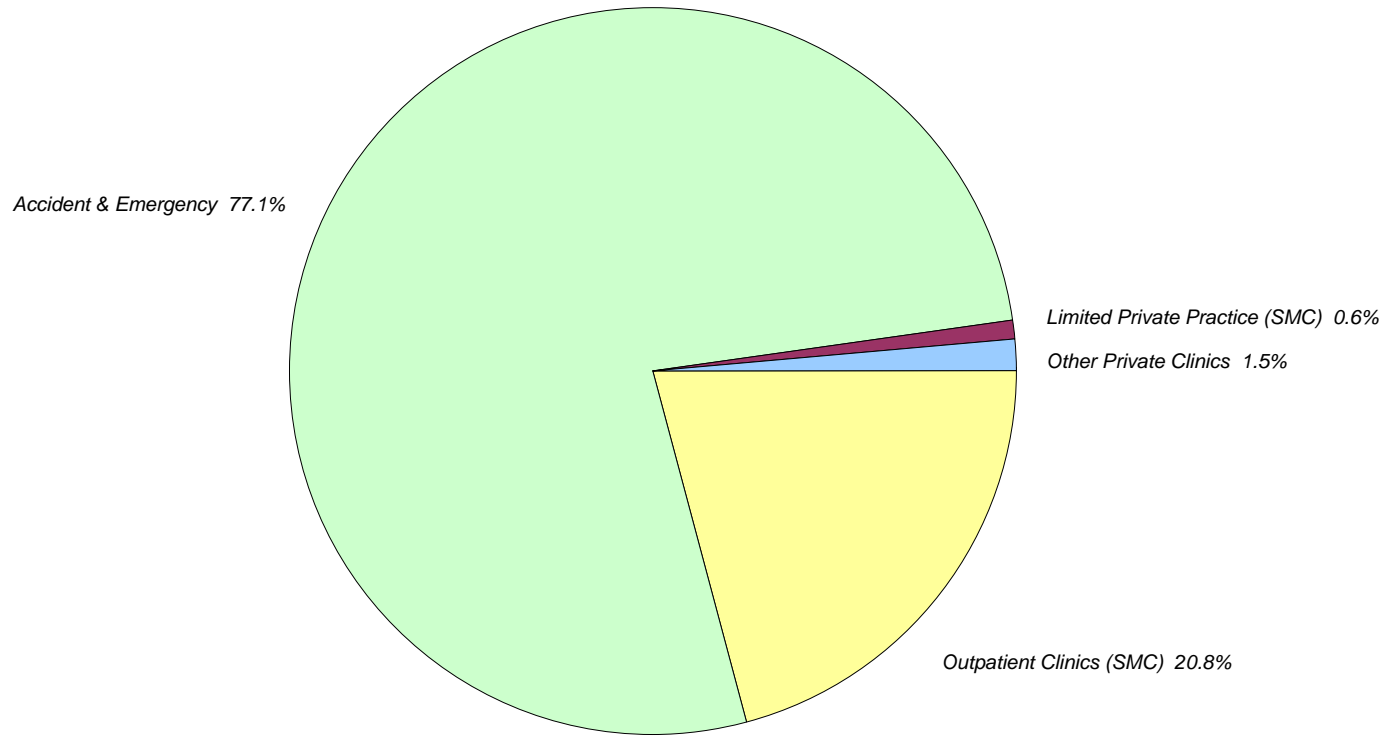
Total						Dead						Alive						Source of Admission
Dead			Alive			Non-Bahraini			Bahraini			Non-Bahraini			Bahraini			
Total	Female	Male	Total	Female	Male	Total	Female	Male	Total	Female	Male	Total	Female	Male	Total	Female	Male	
47	19	28	9,651	5,070	4,581	6	3	3	41	16	25	1,220	651	569	8,431	4,419	4,012	() Outpatient Clinics (SMC)
955	427	528	34,980	19,847	15,133	138	42	96	817	385	432	7,572	3,445	4,127	27,408	16,402	11,006	Accident & Emergency
-	-	-	284	177	107	-	-	-	-	-	-	60	36	24	224	141	83	() Limited Private Practice (SMC)
2	-	2	702	338	364	1	-	1	1	-	1	121	35	86	581	303	278	() Other Private Clinics
1,004	446	558	45,617	25,432	20,185	145	45	100	859	401	458	8,973	4,167	4,806	36,644	21,265	15,379	Total

Percent Distribution (%)

(%)

4.7	4.3	5.0	21.2	19.9	22.7	4.1	6.7	3.0	4.8	4.0	5.5	13.6	15.6	11.8	23.0	20.8	26.1	() Outpatient Clinics (SMC)
95.1	95.7	94.6	76.7	78.0	75.0	95.2	93.3	96.0	95.1	96.0	94.3	84.4	82.7	85.9	74.8	77.1	71.6	Accident & Emergency
-	-	-	0.6	0.7	0.5	-	-	-	-	-	-	0.7	0.9	0.5	0.6	0.7	0.5	() Limited Private Practice (SMC)
0.2	-	0.4	1.5	1.3	1.8	0.7	-	1.0	0.1	-	0.2	1.3	0.8	1.8	1.6	1.4	1.8	() Other Private Clinics

Figure 9.3
2007 ()
Discharges (Alive and Dead) By Source of Admission 2007



Reference: Table 9.8

9.8 :

جدول 9.9 Table 9.9

2007 ()
Discharges (Alive and Dead) by Marital Status, Nationality and Sex 2007

<i>Total</i>						<i>Dead</i>						<i>Alive</i>						<i>Marital Status</i>
<i>Dead</i>			<i>Alive</i>			<i>Non-Bahraini</i>			<i>Bahraini</i>			<i>Non-Bahraini</i>			<i>Bahraini</i>			
<i>Total</i>	<i>Female</i>	<i>Male</i>	<i>Total</i>	<i>Female</i>	<i>Male</i>	<i>Total</i>	<i>Female</i>	<i>Male</i>	<i>Total</i>	<i>Female</i>	<i>Male</i>	<i>Total</i>	<i>Female</i>	<i>Male</i>	<i>Total</i>	<i>Female</i>	<i>Male</i>	
282	106	176	20,341	7,028	13,313	100	29	71	182	77	105	5,312	1,267	4,045	15,029	5,761	9,268	Single
529	185	344	23,729	17,083	6,646	35	9	26	494	176	318	3,576	2,820	756	20,153	14,263	5,890	Married
171	141	30	1,282	1,113	169	8	6	2	163	135	28	69	68	1	1,213	1,045	168	Widowed
20	13	7	256	204	52	1	1	-	19	12	7	11	10	1	245	194	51	Divorced
2	1	1	9	4	5	1	-	1	1	1	-	5	2	3	4	2	2	Unknown
1,004	446	558	45,617	25,432	20,185	145	45	100	859	401	458	8,973	4,167	4,806	36,644	21,265	15,379	Total

Percent Distribution (%)

(%)

28.1	23.8	31.5	44.6	27.6	66.0	69.0	64.4	71.0	21.2	19.2	22.9	59.2	30.4	84.2	41.0	27.1	60.3	Single
52.7	41.5	61.6	52.0	67.2	32.9	24.1	20.0	26.0	57.5	43.9	69.4	39.9	67.7	15.7	55.0	67.1	38.3	Married
17.0	31.6	5.4	2.8	4.4	0.8	5.5	13.3	2.0	19.0	33.7	6.1	0.8	1.6	0.02	3.3	4.9	1.1	Widowed
2.0	2.9	1.3	0.6	0.8	0.3	0.7	2.2	-	2.2	3.0	1.5	0.1	0.2	0.02	0.7	0.9	0.3	Divorced
0.2	0.2	0.2	0.02	0.02	0.02	0.7	-	1.0	0.1	0.2	-	0.06	0.05	0.1	0.01	0.01	0.01	Unknown

Table 9.10
2007 ()
Discharges (Alive and Dead) by Nationality and Sex 2007

Nationality	Total			Dead			Alive		
	Total	Female	Male	Total	Female	Male	Total	Female	Male
Bahraini	37,503	21666	15837	859	401	458	36,644	21,265	15,379
Indian	3,550	1356	2194	52	9	43	3,498	1,347	2,151
Other Arab	1,039	469	570	21	7	14	1,018	462	556
Pakistani	1,337	904	433	12	6	6	1,325	898	427
Bangladeshi	979	161	818	20	5	15	959	156	803
Philipino	492	348	144	4	2	2	488	346	142
Saudi Arabian	425	192	233	10	5	5	415	187	228
Other Countries of Gulf Co-operation Council	125	72	53	6	4	2	119	68	51
Other Asians	236	187	49	2	-	2	234	187	47
Srilankan	302	108	194	8	4	4	294	104	190
African (non Arab)	118	63	55	3	1	2	115	62	53
Iranian	262	152	110	3	1	2	259	151	108
European	168	153	15	-	-	-	168	153	15
American	43	17	26	3	-	3	40	17	23
Other Nationalities	42	30	12	1	1	-	41	29	12
Total	46,621	25,878	20,743	1,004	446	558	45,617	25,432	20,185

Percent Distribution (%)

(%)

Bahraini	80.4	83.7	76.3	85.6	89.9	82.1	80.3	83.6	76.2
Indian	7.6	5.2	10.6	5.2	2.0	7.7	7.7	5.3	10.7
Other Arab	2.2	1.8	2.7	2.1	1.6	2.5	2.2	1.8	2.8
Pakistani	2.9	3.5	2.1	1.2	1.3	1.1	2.9	3.5	2.1
Bangladeshi	2.1	0.6	3.9	2.0	1.1	2.7	2.1	0.6	4.0
Philipino	1.1	1.3	0.7	0.4	0.4	0.4	1.1	1.4	0.7
Saudi Arabian	0.9	0.7	1.1	1.0	1.1	0.9	0.9	0.7	1.1
Other Countries of Gulf Co-operation Council	0.3	0.3	0.3	0.6	0.9	0.4	0.3	0.3	0.3
Other Asians	0.5	0.7	0.2	0.2	-	0.4	0.5	0.7	0.2
Srilankan	0.6	0.4	0.9	0.8	0.9	0.7	0.6	0.4	0.9
African (non Arab)	0.3	0.2	0.3	-	0.2	0.4	0.3	0.2	0.3
Iranian	0.6	0.6	0.5	0.3	0.2	0.4	0.6	0.6	0.5
European	0.4	0.6	0.1	-	-	-	0.4	0.6	0.1
American	0.1	0.1	0.1	0.3	-	0.5	0.1	0.1	0.1
Other Nationalities	0.1	0.1	0.1	0.1	0.2	-	0.1	0.1	0.1

Table 9.11
2007 ()
Discharges (Alive and Dead) by Principal Diagnosis, Nationality and Sex 2007

<i>Grand Total</i>	<i>Total</i>				<i>Non-Bahraini</i>				<i>Bahraini</i>				<i>Principal Diagnosis</i>	<i>ICD-10 Code</i>
	<i>Female</i>		<i>Male</i>		<i>Female</i>		<i>Male</i>		<i>Female</i>		<i>Male</i>			
	<i>Dead</i>	<i>Alive</i>	<i>Dead</i>	<i>Alive</i>	<i>Dead</i>	<i>Alive</i>	<i>Dead</i>	<i>Alive</i>	<i>Dead</i>	<i>Alive</i>	<i>Dead</i>	<i>Alive</i>		
2,183	168	795	183	1,037	9	189	18	327	159	606	165	710	Certain infectious & parasitic diseases	A00-B99
1,692	38	913	70	671	3	143	7	72	35	770	63	599	Neoplasms	C00-D49
4,203	6	1,599	4	2,594	1	58	1	37	5	1,541	3	2,557	Diseases of the blood and blood-forming organs and certain disorders involving the immune mechanism	D50-D89
1,226	6	587	6	627	1	65	2	119	5	522	4	508	()	E00-E90
84	-	25	-	59	-	8	-	21	-	17	-	38	Endocrine, nutritional and metabolic diseases	F00-F99
578	11	237	6	324	-	39	2	75	11	198	4	249	Mental and behavioural disorders	G00-G99
1,120	-	523	-	597	-	42	-	105	-	481	-	492	Diseases of the nervous system	H00-H59
350	-	166	-	184	-	16	-	24	-	150	-	160	Diseases of the eye and adnexa	H60-H95
3,536	104	1,232	130	2,070	12	146	34	780	92	1,086	96	1,290	Diseases of the ear and mastoid process	I00-I99
4,260	40	1,713	51	2,456	-	158	7	373	40	1,555	44	2,083	Diseases of the circulatory system	J00-J99
3,616	9	1,478	26	2,103	1	238	7	642	8	1,240	19	1,461	Diseases of the respiratory system	K00-K99
625	1	236	-	388	1	39	-	108	-	197	-	280	Diseases of the digestive system	L00-L99
													Diseases of the skin and subcutaneous tissue	

(تابع) جدول 9.11 (Cont'd) Table 9.11
 2007
 Discharges (Alive and Dead) by Principal Diagnosis, Nationality and Sex 2007

Grand Total	Total				Non-Bahraini				Bahraini				Principal Diagnosis	ICD-10 Code
	Female		Male		Female		Male		Female		Male			
	Dead	Alive	Dead	Alive	Dead	Alive	Dead	Alive	Dead	Alive	Dead	Alive		
1,348	2	575	-	771	-	37	-	168	2	538	-	603	Diseases of the musculoskeletal system and connective tissue	M00-M99
2,494	4	1,514	5	971	-	265	-	286	4	1,249	5	685	Diseases of the genitourinary system	N00-N99
10,403	-	10,403	-	-	-	2,180	-	-	-	8,223	-	-	Pregnancy, childbirth and the puerperium	O00-O99
1,253	36	509	26	682	12	75	8	127	24	434	18	555	Certain conditions originating in the perinatal period	P00-P99
571	5	214	12	340	2	32	-	38	3	182	12	302	() Congenital malformations, deformations and chromosomal abnormalities	Q00-Q99
2,444	9	1,086	9	1,340	2	148	1	387	7	938	8	953	Symptoms, signs and abnormal clinical and laboratory findings not elsewhere classified	R00-R99
3,588	7	1,118	30	2,433	1	231	13	1,027	6	887	17	1,406	Injury, poisoning and certain other consequences of external causes	S00-T98
11	-	6	-	5	-	-	-	2	-	6	-	3	External causes of morbidity and mortality	V00-Y98
1,036	-	503	-	533	-	58	-	88	-	445	-	445	Factors influencing health status and contact with health services	Z00-Z99
46,621	446	25,432	558	20,185	45	4,167	100	4,806	401	21,265	458	15,379	Total	

Table 9.12
2007 ()
Discharges (Alive and Dead) by Principal Diagnosis and Age Groups 2007

<i>Total</i>	<i>70+</i>	<i>60-69</i>	<i>50-59</i>	<i>40-49</i>	<i>30-39</i>	<i>20-29</i>	<i>10-19</i>	<i>1-9</i>	<i><1 yrs</i>		<i>Principal Diagnosis</i>	<i>ICD-12 Code</i>
1,832	138	58	97	115	166	219	104	622	313	Alive	Certain infectious & parasitic diseases	A00-B99
351	211	63	26	20	10	9	4	5	3	Dead		
1,584	163	231	293	322	154	70	170	170	11	Alive	Neoplasms	C00-D49
108	36	32	19	11	3	2	2	3	-	Dead		
4,193	23	22	74	282	813	1,579	957	420	23	Alive	Diseases of the blood and blood-forming organs and certain disorders involving the immune mechanism	D50-D89
10	3	-	-	2	1	2	-	1	1	Dead		
1,214	191	153	252	140	94	126	135	84	39	Alive	() Endocrine, nutritional and metabolic diseases	E00-E90
12	6	-	-	1	1	2	-	1	1	Dead		
84	8	11	8	21	17	11	7	1	-	Alive	Mental and behavioural disorders	F00-F99
-	-	-	-	-	-	-	-	-	-	Dead		
561	45	26	62	77	85	83	70	94	19	Alive	Diseases of the nervous system	G00-G99
17	4	4	4	1	-	1	-	-	3	Dead		
1,120	232	296	194	110	64	74	47	100	3	Alive	Diseases of the eye and adnexa	H00-H59
-	-	-	-	-	-	-	-	-	-	Dead		
350	10	11	14	32	39	40	41	146	17	Alive	Diseases of the ear and mastoid process	H60-H95
-	-	-	-	-	-	-	-	-	-	Dead		
3,302	764	622	731	632	313	161	46	19	14	Alive	Diseases of the circulatory system	I00-I99
234	98	44	47	26	11	4	2	-	2	Dead		
4,169	315	179	224	276	417	495	425	1,450	388	Alive	Diseases of the respiratory system	J00-J99
91	53	17	7	7	2	-	2	2	1	Dead		
3,581	233	230	344	581	626	681	351	373	162	Alive	Diseases of the digestive system	K00-K99
35	12	7	5	6	3	-	2	-	-	Dead		
624	32	34	76	85	87	102	85	101	22	Alive	Diseases of the skin and subcutaneous tissue	L00-L99
1	1	-	-	-	-	-	-	-	-	Dead		

(تابع) جدول 9.12 (Cont'd) Table 9.12
 2007 ()
 Discharges (Alive and Dead) by Principal Diagnosis and Age Groups 2007

Total	70+	60-69	50-59	40-49	30-39	20-29	10-19	1-9	<1 yrs		Principal Diagnosis	ICD-12 Code
1,346	116	169	211	219	199	257	109	63	3	Alive	Diseases of the musculoskeletal system and connective tissue	M00-M99
2	-	-	-	1	-	-	1	-	-	Dead		
2,485	233	208	332	579	476	365	134	124	34	Alive	Diseases of the genitourinary system	N00-N99
9	6	-	1	-	-	1	1	-	-	Dead		
10,403	1	1	2	719	4,148	5,251	281	-	-	Alive	Pregnancy, childbirth and the puerperium	O00-O99
-	-	-	-	-	-	-	-	-	-	Dead		
1,191	-	-	-	-	-	-	-	-	1,191	Alive	Certain conditions originating in the perinatal period	P00-P99
62	-	-	-	-	-	-	-	-	62	Dead		
554	1	1	4	14	16	29	50	230	209	Alive	() Congenital malformations, deformations and chromosomal abnormalities	Q00-Q99
17	-	-	-	-	-	2	-	-	15	Dead		
2,426	234	172	274	389	287	332	253	331	154	Alive	Symptoms, signs and abnormal clinical and laboratory findings not elsewhere classified	R00-R99
18	9	6	1	1	-	-	1	-	-	Dead		
3,551	233	139	205	370	631	755	428	682	108	Alive	Injury, poisoning and certain other consequences of external causes	S00-T98
37	6	5	3	4	8	5	4	1	1	Dead		
11	-	-	4	1	1	2	1	2	-	Alive	External causes of morbidity and mortality	V00-Y98
-	-	-	-	-	-	-	-	-	-	Dead		
1,036	25	39	64	83	141	140	67	297	180	Alive	Factors influencing health status and contact with health services	Z00-Z99
-	-	-	-	-	-	-	-	-	-	Dead		
45,617	2,997	2,602	3,465	5,047	8,774	10,772	3,761	5,309	2,890	Alive	Total	
1,004	445	178	113	80	39	28	19	13	89	Dead		
46,621	3,442	2,780	3,578	5,127	8,813	10,800	3,780	5,322	2,979	Total		

Table 9.13
2007
Discharges by Discharge Status, Nationality and Department 2007

<i>Grand Total</i>	<i>SCBU</i>	<i>Total</i>	<i>Intensive Care Unit</i>	<i>Nephrology</i>	<i>Neuro-Sciences</i>	<i>Oncology</i>	<i>Dental</i>	<i>Ophthalmology</i>	<i>E.N.T.</i>	<i>Paediatrics</i>	<i>Obs. & Gyne.</i>	<i>Plastic Surg. Burns</i>	<i>Orthop & Fracture</i>	<i>Surgical</i>	<i>Medical</i>	<i>Nationality</i>	<i>Discharge Status</i>
35,097	290	34,807	4	861	1,399	2,644	257	1,078	2,809	4,589	9,158	366	1,789	4,387	5,466	Bah	Routine discharge home
8,672	71	8,601	6	111	607	101	61	225	289	697	2,418	164	646	1,436	1,840	Non-Bah	
43,769	361	43,408	10	972	2,006	2,745	318	1,303	3,098	5,286	11,576	530	2,435	5,823	7,306	Total	
925	1	924	-	13	34	88	1	5	5	115	377	16	8	84	178	Bah	Left against medical advise
178	-	178	-	1	9	2	-	2	-	10	75	6	1	26	46	Non-Bah	
1,103	1	1,102	-	14	43	90	1	7	5	125	452	22	9	110	224	Total	
134	21	113	12	10	6	16	-	-	-	3	1	-	-	1	64	Bah	48
39	5	34	7	3	4	1	-	-	-	2	-	-	-	1	16	Non-Bah	Died before
173	26	147	19	13	10	17	-	-	-	5	1	-	-	2	80	Total	48 hours
725	36	689	56	55	76	142	1	-	3	19	1	4	17	25	290	Bah	وفاة بعد 48 ساعة
106	15	91	8	2	31	6	3	-	-	4	-	1	1	4	31	Non-Bah	Died after 48 hours
831	51	780	64	57	107	148	4	-	3	23	1	5	18	29	321	Total	
618	279	339	1	-	4	12	-	-	-	6	12	-	2	3	299	Bah	Transferred to other hospitals
122	79	43	-	-	1	1	-	-	-	1	2	-	-	1	37	Non-Bah	
740	358	382	1	-	5	13	-	-	-	7	14	-	2	4	336	Total	
-	-	-	-	-	-	-	-	-	-	-	-	-	-	-	-	Bah	Discharged to overseas hospitals
1	-	1	-	-	-	-	-	-	-	-	-	-	-	-	1	Non-Bah	
1	-	1	-	-	-	-	-	-	-	-	-	-	-	-	1	Total	
4	-	4	-	-	-	1	-	-	-	-	1	-	-	-	2	Bah	Undetermined
-	-	-	-	-	-	-	-	-	-	-	-	-	-	-	-	Non-Bah	
4	-	4	-	-	-	1	-	-	-	-	1	-	-	-	2	Total	
37,503	627	36,876	73	939	1,519	2,903	259	1,083	2,817	4,732	9,550	386	1,816	4,500	6,299	Bah	Grand Total
9,118	170	8,948	21	117	652	111	64	227	289	714	2,495	171	648	1,468	1,971	Non-Bah	
46,621	797	45,824	94	1,056	2,171	3,014	323	1,310	3,106	5,446	12,045	557	2,464	5,968	8,270	Total	

Table 9.14

2007
Discharges, Days of Care and Average Length of Stay by Principal Diagnosis, Sex and Age Groups 2007

Male						Female						Grand Total	DISCH DOC ALS	Principal Diagnosis	ICD10 Code
Age Groups						Age Groups									
Total	65+	45-64	15-44	1-14	<1 yrs	Total	65+	45-64	15-44	1-14	<1 yrs				
2,416	6	38	1,976	394	2	1,437	3	106	1,053	275	-	3,853	DISCH	Sickle-cell disorders	D57
10,773	27	229	8,782	1,730	5	7,701	14	666	5,758	1,263	-	18,474	DOC		
4.5	4.5	6.0	4.4	4.4	2.5	5.4	4.7	6.3	5.5	4.6	-	4.8	ALS		
NA	NA	NA	NA	NA	NA	3,058	1	14	3,041	2	NA	3,058	DISCH	Single spontaneous delivery	O80
NA	NA	NA	NA	NA	NA	7,712	5	29	7,675	3	NA	7,712	DOC		
NA	NA	NA	NA	NA	NA	2.5	5	2.1	2.5	2	NA	2.5	ALS		
NA	NA	NA	NA	NA	NA	1,326	-	26	1,300	-	NA	1,326	DISCH	-	O03
NA	NA	NA	NA	NA	NA	2,488	-	47	2,441	-	NA	2,488	DOC		
NA	NA	NA	NA	NA	NA	1.9	-	1.8	1.9	-	NA	1.9	ALS		
NA	NA	NA	NA	NA	NA	1,229	-	8	1,221	-	NA	1,229	DISCH	Perineal laceration during delivery	O70
NA	NA	NA	NA	NA	NA	2,826	-	19	2,807	-	NA	2,826	DOC		
NA	NA	NA	NA	NA	NA	2.3	-	2.4	2.3	-	NA	2.3	ALS		
631	-	-	88	541	2	492	-	-	78	414	-	1,123	DISCH	Chronic diseases of tonsils and adenoids	J35
1,803	-	-	342	1,458	3	1,346	-	-	268	1,078	-	3,149	DOC		
2.9	-	-	4	3	2	2.7	-	-	3.4	2.6	-	2.8	ALS		
574	39	30	54	322	129	490	36	29	69	244	112	1,064	DISCH	Diarrhoea and gastroenteritis of presumed infectious origin	A09
1,604	163	107	171	786	377	1,472	147	110	256	595	364	3,076	DOC		
2.8	4	3.6	3.2	2.4	2.9	3.0	4	3.8	3.7	2.4	3.3	2.9	ALS		

Principle Diagnosis: the leading 100 diagnosis are listed and the total number of discharges made up by the last entry in the table - "others".

100

DISCH : Discharges

DOC : Days of Care (by number of discharges)

ALS : Average Length of Stay

(Cont'd) Table 9.14 ()

2007
Discharges, Days of Care and Average Length of Stay by Principal Diagnosis, Sex and Age Groups 2007

Male						Female						Grand Total	DISCH DOC ALS	Principal Diagnosis	ICD10 Code
Age Groups						Age Groups									
Total	65+	45-64	15-44	1-14	<1 yrs	Total	65+	45-64	15-44	1-14	<1 yrs				
555	16	47	311	158	23	190	14	14	79	67	16	745	DISCH	Other and unspecified injuries of head	S09
4,418	512	2,170	1,442	255	39	482	103	27	213	89	50	4,900	DOC		
8.0	32.0	46.2	4.6	1.6	2	2.5	7.4	1.9	2.7	1.3	3	6.6	ALS		
424	71	200	144	8	1	277	87	131	57	2	-	701	DISCH	Pain in throat and chest	R07
1,127	238	520	342	26	1	898	329	409	158	2	-	2,025	DOC		
2.7	3.4	2.6	2.4	3.3	1.0	3.2	3.8	3.1	2.8	1.0	-	2.9	ALS		
460	-	25	349	86	-	179	2	5	126	46	-	639	DISCH	Acute appendicitis	K35
1,992	-	102	1,440	450	-	768	16	30	491	231	-	2,760	DOC		
4.3	-	4.1	4.1	5.2	-	4.3	8	6.0	3.9	5.0	-	4.3	ALS		
NA	NA	NA	NA	NA	NA	628	-	6	622	-	-	628	DISCH	Maternal care for known or suspected abnormality of pelvic organs	O34
NA	NA	NA	NA	NA	NA	3,243	-	24	3,219	-	-	3,243	DOC		
NA	NA	NA	NA	NA	NA	5.2	-	4.0	5.2	-	-	5.2	ALS		
NA	NA	NA	NA	NA	NA	627	-	6	621	-	NA	627	DISCH	Maternal care for other known or suspected fetal problems	O36
NA	NA	NA	NA	NA	NA	2,453	-	25	2,428	-	NA	2,453	DOC		
NA	NA	NA	NA	NA	NA	3.9	-	4.2	3.9	-	NA	3.9	ALS		
355	106	184	64	1	-	247	84	108	53	2	-	602	DISCH	Non-insulin-dependent diabetes mellitus	E11
4,505	1,816	2,224	462	3	-	2,302	666	1,144	488	4	-	6,807	DOC		
12.7	17.1	12.1	7.2	3	-	9.3	7.9	10.6	9.2	2	-	11.3	ALS		
341	NA	NA	NA	NA	341	252	NA	NA	NA	NA	252	593	DISCH	Neonatal jaundice from other and unspecified causes	P59
1,591	NA	NA	NA	NA	1,591	1,177	NA	NA	NA	NA	1,177	2,768	DOC		
4.7	NA	NA	NA	NA	4.7	4.7	NA	NA	NA	NA	4.7	4.7	ALS		

(Cont'd) Table 9.14 ()

2007

Discharges, Days of Care and Average Length of Stay by Principal Diagnosis, Sex and Age Groups 2007

Male						Female						Grand Total	DISCH DOC ALS	Principal Diagnosis	ICD10 Code
Age Groups						Age Groups									
Total	65+	45-64	15-44	1-14	<1 yrs	Total	65+	45-64	15-44	1-14	<1 yrs				
361	1	9	191	150	10	216	1	15	111	87	2	577	DISCH	Acute tonsillitis	J03
970	1	22	487	412	48	597	4	45	292	251	5	1,567	DOC		
2.7	1.0	2.4	2.5	2.7	4.8	2.8	4.0	3.0	2.6	2.9	2.5	2.7	ALS		
280	138	119	23	-	-	271	143	119	5	4	-	551	DISCH	Other cataract	H26
1,292	677	498	117	-	-	1,217	640	545	15	17	-	2,509	DOC		
4.6	4.9	4.2	5.1	-	-	4.5	4.5	4.6	3.0	4.3	-	4.6	ALS		
NA	NA	NA	NA	NA	NA	511	-	2	509	-	NA	511	DISCH	Other maternal diseases classifiable elsewhere but complicating pregnancy, childbirth and the puerperium	O99
NA	NA	NA	NA	NA	NA	1,937	-	6	1,931	-	NA	1,937	DOC		
NA	NA	NA	NA	NA	NA	3.8	-	3	3.8	-	NA	3.8	ALS		
322	48	44	101	95	34	187	30	17	47	74	19	509	DISCH	Pneumonia, organism unspecified	J18
2,582	896	301	600	579	206	1,291	282	160	279	445	125	3,873	DOC		
8.0	18.7	6.8	5.9	6.1	6.1	6.9	9	9.4	5.9	6.0	6.6	7.6	ALS		
255	163	37	24	6	25	229	159	34	16	5	15	484	DISCH	Other septicaemia	A41
5,610	2,937	1,763	516	226	168	5,307	3,708	1,071	328	56	144	10,917	DOC		
22.0	18	47.6	21.5	37.7	6.7	23.2	23.3	31.5	20.5	11.2	9.6	22.6	ALS		
434	55	87	153	68	71	41	1	1	3	20	16	475	DISCH	Inguinal hernia	K40
2,077	380	493	689	175	340	125	3	5	12	49	56	2,202	DOC		
4.8	6.9	5.7	4.5	2.6	4.8	3.0	3.0	5.0	4.0	2.5	3.5	4.6	ALS		
112	13	32	55	12	-	340	19	90	221	9	1	452	DISCH	Cholelithiasis	K80
736	106	172	370	88	-	1,925	140	489	1,226	66	4	2,661	DOC		
6.6	8.2	5.4	6.7	7.3	-	5.7	7.4	5.4	5.5	7.3	4.0	5.9	ALS		

(Cont'd) Table 9.14 ()

2007
Discharges, Days of Care and Average Length of Stay by Principal Diagnosis, Sex and Age Groups 2007

Male						Female						Grand Total	DISCH DOC ALS	Principal Diagnosis	ICD10 Code
Age Groups						Age Groups									
Total	65+	45-64	15-44	1-14	<1 yrs	Total	65+	45-64	15-44	1-14	<1 yrs				
250	3	11	16	152	68	189	1	10	16	122	40	439	DISCH	Other special examinations and investigations of persons without complaint or reported diagnosis	Z01
357	15	32	45	185	80	243	8	35	31	124	45	600	DOC		
1.4	5.0	2.9	2.8	1.2	1.2	1.3	8.0	3.5	1.9	1.0	1.1	1.4	ALS		
369	58	218	93	-	-	59	27	28	4	-	-	428	DISCH	Acute myocardial infarction	I21
1,629	255	975	399	-	-	819	115	691	13	-	-	2,448	DOC		
4.4	4.4	4.5	4.3	-	-	13.9	4.3	24.7	3.3	-	-	5.7	ALS		
167	6	20	73	66	2	235	12	31	139	53	-	402	DISCH	Abdominal and pelvic pain	R10
514	37	101	218	156	2	806	76	171	442	117	-	1,320	DOC		
3.1	6.2	5.1	3.0	2.4	1.0	3.4	6.3	5.5	3.2	2.2	-	3.3	ALS		
236	12	21	95	71	37	156	12	18	60	43	23	392	DISCH	Fever of unknown origin	R50
1,391	98	146	687	320	140	802	87	98	364	181	72	2,193	DOC		
5.9	8.2	7.0	7.2	4.5	3.8	5.1	7.3	5.4	6.1	4.2	3.1	5.6	ALS		
124	44	26	24	19	11	257	97	54	59	41	6	381	DISCH	Other disorders of urinary system	N39
1,002	345	220	170	173	94	1,766	776	475	317	170	28	2,768	DOC		
8.1	7.8	8.5	7.1	9.1	8.5	6.9	8.0	8.8	5.4	4.1	4.7	7.3	ALS		
192	15	21	29	88	39	183	38	45	26	55	19	375	DISCH	Status asthmaticus	J46
932	90	208	157	304	173	929	208	261	168	208	84	1,861	DOC		
4.9	6.0	9.9	5.4	3.5	4.4	5.1	5.5	5.8	6.5	3.8	4.4	5.0	ALS		
225	43	126	54	2	-	148	53	72	23	-	-	373	DISCH	Essential (primary) hypertension	I10
906	255	474	164	13	-	520	220	231	69	-	-	1,426	DOC		
4.0	5.9	3.8	3.0	6.5	-	3.5	4.2	3.2	3.0	-	-	3.8	ALS		

(Cont'd) Table 9.14 ()

2007
Discharges, Days of Care and Average Length of Stay by Principal Diagnosis, Sex and Age Groups 2007

Male						Female						Grand Total	DISCH DOC ALS	Principal Diagnosis	ICD10 Code
Age Groups						Age Groups									
Total	65+	45-64	15-44	1-14	<1 yrs	Total	65+	45-64	15-44	1-14	<1 yrs				
234	52	132	49	-	1	132	67	52	13	-	-	366	DISCH	Angina pectoris	I20
733	183	378	168	-	4	520	301	153	66	-	-	1,253	DOC		
3.1	3.5	2.9	3.4	-	4.0	3.9	4.5	2.9	5.1	-	-	3.4	ALS		
NA	NA	NA	NA	NA	NA	332	-	10	322	-	NA	332	DISCH	Unspecified maternal hypertension	O16
NA	NA	NA	NA	NA	NA	1,365	-	53	1,312	-	NA	1,365	DOC		
NA	NA	NA	NA	NA	NA	4.1	-	5	4.1	-	NA	4.1	ALS		
140	15	28	43	53	1	151	31	23	45	50	2	291	DISCH	Gastritis and duodenitis	K29
391	58	105	99	127	2	533	169	62	140	158	4	924	DOC		
2.8	3.9	3.8	2.3	2.4	2.0	3.5	5	2.7	3.1	3.2	2.0	3.2	ALS		
NA	NA	NA	NA	NA	NA	291	-	-	291	-	NA	291	DISCH	Infections of genitourinary tract in pregnancy	O23
NA	NA	NA	NA	NA	NA	1,002	-	-	1,002	-	NA	1,002	DOC		
NA	NA	NA	NA	NA	NA	3.4	-	-	3.4	-	NA	3.4	ALS		
135	11	15	74	30	5	147	6	27	72	41	1	282	DISCH	Complications of procedures, not elsewhere classified	T81
711	56	107	456	82	10	1,009	199	312	378	115	5	1,720	DOC		
5.3	5.1	7.1	6.2	3	2	6.9	33.2	11.6	5.3	3	5	6.1	ALS		
NA	NA	NA	NA	NA	NA	273	-	3	270	-	NA	273	DISCH	Other abnormal products of conception	O02
NA	NA	NA	NA	NA	NA	783	-	11	772	-	NA	783	DOC		
NA	NA	NA	NA	NA	NA	2.9	-	3.7	2.9	-	NA	2.9	ALS		
230	11	56	158	4	1	41	3	14	20	4	-	271	DISCH	Calculus of kidney and ureter	N20
1,101	72	301	703	21	4	222	10	78	82	52	-	1,323	DOC		
4.8	6.5	5.4	4.4	5.3	4.0	5.4	3.3	5.6	4.1	13.0	-	4.9	ALS		

(Cont'd) Table 9.14 ()

2007
Discharges, Days of Care and Average Length of Stay by Principal Diagnosis, Sex and Age Groups 2007

Male						Female						Grand Total	DISCH DOC ALS	Principal Diagnosis	ICD10 Code
Age Groups						Age Groups									
Total	65+	45-64	15-44	1-14	<1 yrs	Total	65+	45-64	15-44	1-14	<1 yrs				
128	90	35	3	-	-	142	98	39	5	-	-	270	DISCH	Hypertensive heart disease	I11
696	527	156	13	-	-	915	714	172	29	-	-	1,611	DOC		
5.4	5.9	4.5	4.3	-	-	6.4	7.3	4.4	5.8	-	-	6.0	ALS		
137	45	62	29	1	-	130	57	38	33	2	-	267	DISCH	Hypertensive renal disease	I12
1,350	675	508	160	7	-	1,198	568	384	238	8	-	2,548	DOC		
9.9	15.0	8.2	5.5	7.0	-	9.2	10	10.1	7.2	4.0	-	9.5	ALS		
171	61	79	31	-	-	95	56	33	6	-	-	266	DISCH	Stroke, not specified as haemorrhage or infarction	I64
2,361	1,123	901	337	-	-	1,573	1,055	446	72	-	-	3,934	DOC		
13.8	18.4	11.4	10.9	-	-	16.6	18.8	13.5	12.0	-	-	14.8	ALS		
NA	NA	NA	NA	NA	NA	265	-	1	264	-	NA	265	DISCH	Haemorrhage in early pregnancy	O20
NA	NA	NA	NA	NA	NA	1,184	-	3	1,181	-	NA	1,184	DOC		
NA	NA	NA	NA	NA	NA	4.5	-	3.0	4.5	-	NA	4.5	ALS		
166	3	20	135	7	1	83	1	7	66	9	-	249	DISCH	Other disorders of nose and nasal sinuses	J34
561	8	71	447	30	5	324	74	34	192	24	-	885	DOC		
3.4	2.7	3.6	3.3	4.3	5	3.9	74.0	4.9	2.9	2.7	-	3.6	ALS		
142	55	18	52	17	-	107	76	14	9	7	1	249	DISCH	Fracture of femur	S72
2,062	877	388	642	155	-	1,439	1,151	141	59	86	2	3,501	DOC		
14.5	15.9	21.6	12.3	9.1	-	13.4	15.1	10.1	6.6	12.3	2	14.1	ALS		
244	-	-	244	-	-	3	-	2	1	-	-	247	DISCH	Internal derangement of knee	M23
874	-	-	874	-	-	10	-	5	5	-	-	884	DOC		
3.6	-	-	3.6	-	-	3.3	-	2.5	5.0	-	-	3.6	ALS		

(Cont'd) Table 9.14 ()

2007
Discharges, Days of Care and Average Length of Stay by Principal Diagnosis, Sex and Age Groups 2007

Male						Female						Grand Total	DISCH DOC ALS	Principal Diagnosis	ICD10 Code
Age Groups						Age Groups									
Total	65+	45-64	15-44	1-14	<1 yrs	Total	65+	45-64	15-44	1-14	<1 yrs				
NA	NA	NA	NA	NA	NA	247	-	115	128	4	NA	247	DISCH	Excessive, frequent and irregular menstruation	N92
NA	NA	NA	NA	NA	NA	849	-	445	398	6	NA	849	DOC		
NA	NA	NA	NA	NA	NA	3.4	-	3.9	3.1	2	NA	3.4	ALS		
175	12	23	113	27	-	54	7	20	22	5	-	229	DISCH	Fracture of lower leg, including ankle	S82
1,356	161	141	966	88	-	413	53	213	133	14	-	1,769	DOC		
7.7	13.4	6.1	8.5	3.3	-	7.6	7.6	10.7	6.0	3	-	7.7	ALS		
101	44	30	27	-	-	126	66	51	9	-	-	227	DISCH	Atrial fibrillation and flutter	I48
444	269	101	74	-	-	523	247	253	23	-	-	967	DOC		
4.4	6.1	3.4	2.7	-	-	4.2	3.7	5.0	2.6	-	-	4.3	ALS		
146	10	24	112	-	-	80	4	12	62	2	-	226	DISCH	Respiratory tuberculosis, not confirmed bacteriologically or histologically	A16
3,169	133	744	2,292	-	-	1,429	51	340	986	52	-	4,598	DOC		
21.7	13.3	31.0	20.5	-	-	17.9	13	28.3	15.9	26.0	-	20.3	ALS		
111	4	7	53	35	12	115	2	6	61	44	2	226	DISCH	() Insulin-dependent diabetes mellitus	E10
602	135	40	259	124	44	491	11	27	266	174	13	1,093	DOC		
5.4	33.8	5.7	4.9	3.5	4	4.3	5.5	4.5	4.4	4.0	7	4.8	ALS		
140	12	33	95	-	-	81	6	32	43	-	-	221	DISCH	Haemorrhoids	I84
768	66	205	497	-	-	398	41	172	185	-	-	1,166	DOC		
5.5	5.5	6.2	5.2	-	-	4.9	6.8	5.4	4.3	-	-	5.3	ALS		
124	38	30	50	3	3	96	35	21	31	9	-	220	DISCH	Other respiratory disorders	J98
939	308	225	349	13	44	1,023	461	141	300	121	-	1,962	DOC		
7.6	8.1	7.5	7.0	4.3	14.7	10.7	13.2	6.7	9.7	13.4	-	8.9	ALS		

(Cont'd) Table 9.14 ()

2007
Discharges, Days of Care and Average Length of Stay by Principal Diagnosis, Sex and Age Groups 2007

<i>Male</i>						<i>Female</i>						<i>Grand Total</i>	<i>DISCH DOC ALS</i>	<i>Principal Diagnosis</i>	<i>ICD10 Code</i>
<i>Age Groups</i>						<i>Age Groups</i>									
<i>Total</i>	<i>65+</i>	<i>45-64</i>	<i>15-44</i>	<i>1-14</i>	<i><1 yrs</i>	<i>Total</i>	<i>65+</i>	<i>45-64</i>	<i>15-44</i>	<i>1-14</i>	<i><1 yrs</i>				
4	2	2	-	-	-	210	35	112	63	-	-	214	DISCH	Malignant Neoplasms of Breast	C50
36	7	29	-	-	-	2,657	516	1,376	765	-	-	2,693	DOC		
9.0	3.5	14.5	-	-	-	12.7	14.7	12.3	12.1	-	-	12.6	ALS		
134	90	43	1	-	-	80	63	14	1	2	-	214	DISCH	Other chronic obstructive pulmonary disease	J44
1,696	802	892	2	-	-	1,235	1,114	100	12	9	-	2,931	DOC		
12.7	8.9	20.7	2.0	-	-	15.4	17.7	7.1	12.0	4.5	-	13.7	ALS		
133	8	38	60	22	5	77	8	26	20	17	6	210	DISCH	Cutaneous abscess, furuncle and carbuncle	L02
927	105	319	375	110	18	409	44	170	97	84	14	1,336	DOC		
7.0	13.1	8.4	6.3	5.0	3.6	5.3	5.5	6.5	4.9	4.9	2.3	6.4	ALS		
110	2	6	17	67	18	84	3	3	13	50	15	194	DISCH	Convulsions, not elsewhere classified	R56
281	7	15	53	144	62	259	5	6	34	174	40	540	DOC		
2.6	3.5	2.5	3.1	2.1	3.4	3.1	1.7	2.0	2.6	3.5	2.7	2.8	ALS		
65	32	25	8	-	-	127	40	83	4	-	-	192	DISCH	Gonarthrosis [arthrosis of knee]	M17
862	532	267	63	-	-	1,620	574	980	66	-	-	2,482	DOC		
13.3	16.6	10.7	7.9	-	-	12.8	14.4	11.8	16.5	-	-	12.9	ALS		
110	1	2	3	9	95	78	2	4	3	3	66	188	DISCH	Acute bronchiolitis	J21
495	3	8	12	33	439	431	9	10	12	28	372	926	DOC		
4.5	3.0	4.0	4.0	3.7	4.6	5.5	4.5	2.5	4.0	9.3	5.6	4.9	ALS		
117	10	24	49	31	3	70	10	13	28	17	2	187	DISCH	Cellulitis	L03
620	105	179	222	101	13	381	69	133	129	47	3	1,001	DOC		
5.3	10.5	7.5	4.5	3.3	4.3	5.4	6.9	10.2	4.6	2.8	1.5	5.4	ALS		

(Cont'd) Table 9.14 ()

2007
Discharges, Days of Care and Average Length of Stay by Principal Diagnosis, Sex and Age Groups 2007

Male						Female						Grand Total	DISCH DOC ALS	Principal Diagnosis	ICD10 Code
Age Groups						Age Groups									
Total	65+	45-64	15-44	1-14	<1 yrs	Total	65+	45-64	15-44	1-14	<1 yrs				
NA	NA	NA	NA	NA	NA	184	-	5	179	-	NA	184	DISCH	()	O24
NA	NA	NA	NA	NA	NA	715	-	17	698	-	NA	715	DOC	Diabetes mellitus in pregnancy	
NA	NA	NA	NA	NA	NA	3.9	-	3.4	3.9	-	NA	3.9	ALS		
NA	NA	NA	NA	NA	NA	179	4	19	151	5	NA	179	DISCH		N83
NA	NA	NA	NA	NA	NA	755	40	120	582	13	NA	755	DOC	Noninflammatory disorders of ovary, fallopian tube and broad ligament	
NA	NA	NA	NA	NA	NA	4.2	10.0	6.3	3.9	2.6	NA	4.2	ALS		
NA	NA	NA	NA	NA	NA	179	-	1	178	-	NA	179	DISCH		O32
NA	NA	NA	NA	NA	NA	927	-	6	921	-	NA	927	DOC	Maternal care for known or suspected malpresentation of fetus	
NA	NA	NA	NA	NA	NA	5.2	-	6.0	5.2	-	NA	5.2	ALS		
139	1	8	97	32	1	38	-	3	22	10	3	177	DISCH		S02
527	2	55	402	67	1	130	-	10	93	24	3	657	DOC	Fracture of skull and facial bones	
3.8	2.0	6.9	4.1	2.1	1.0	3.4	-	3.3	4.2	2	1	3.7	ALS		
100	2	3	22	41	32	75	5	-	10	32	28	175	DISCH		J06
268	3	11	48	110	96	255	30	-	44	96	85	523	DOC	Acute upper respiratory infections of multiple and unspecified sites	
2.7	1.5	3.7	2.2	2.7	3.0	3.4	6.0	-	4.4	3.0	3.0	3.0	ALS		
75	10	30	34	1	-	97	17	47	31	2	-	172	DISCH		M54
525	149	185	188	3	-	727	174	387	163	3	-	1,252	DOC	Dorsalgia	
7.0	14.9	6.2	5.5	3.0	-	7.5	10.2	8.2	5.3	1.5	-	7.3	ALS		
77	NA	NA	NA	NA	77	93	NA	NA	NA	NA	93	170	DISCH		P07
1,134	NA	NA	NA	NA	1,134	1,326	NA	NA	NA	NA	1,326	2,460	DOC	Disorders related to short gestation and low birth weight, not elsewhere classified	
14.7	NA	NA	NA	NA	14.7	14.3	NA	NA	NA	NA	14.3	14.5	ALS		

(Cont'd) Table 9.14 ()

2007
Discharges, Days of Care and Average Length of Stay by Principal Diagnosis, Sex and Age Groups 2007

Male						Female						Grand Total	DISCH DOC ALS	Principal Diagnosis	ICD10 Code
Age Groups						Age Groups									
Total	65+	45-64	15-44	1-14	<1 yrs	Total	65+	45-64	15-44	1-14	<1 yrs				
NA	NA	NA	NA	NA	NA	166	3	99	63	1	-	166	DISCH	Other abnormal uterine and vaginal bleeding	N93
NA	NA	NA	NA	NA	NA	573	9	369	193	2	-	573	DOC		
NA	NA	NA	NA	NA	NA	3.5	3.0	3.7	3.1	2.0	-	3.5	ALS		
108	4	34	69	1	-	57	2	17	37	1	-	165	DISCH	Unspecified renal colic	N23
382	13	121	246	2	-	208	14	63	130	1	-	590	DOC		
3.5	3.3	3.6	3.6	2.0	-	3.6	7.0	3.7	3.5	1	-	3.6	ALS		
NA	NA	NA	NA	NA	NA	155	-	-	155	-	NA	155	DISCH	False labour	O47
NA	NA	NA	NA	NA	NA	460	-	-	460	-	NA	460	DOC		
NA	NA	NA	NA	NA	NA	3.0	-	-	3.0	-	NA	3.0	ALS		
92	24	33	32	3	-	55	22	15	16	2	-	147	DISCH	Other diseases of digestive system	K92
481	209	146	115	11	-	223	108	75	38	2	-	704	DOC		
5.2	8.7	4.4	3.6	3.7	-	4.1	4.9	5.0	2.4	1.0	-	4.8	ALS		
98	36	38	23	1	-	43	25	16	2	-	-	141	DISCH	Chronic ischaemic heart disease	I25
482	207	140	127	8	-	513	391	114	8	-	-	995	DOC		
4.9	5.8	3.7	5.5	8.0	-	11.9	15.6	7.1	4.0	-	-	7.1	ALS		
88	2	21	62	2	1	50	1	9	40	-	-	138	DISCH	Fissure and fistula of anal and rectal regions	K60
511	21	115	369	4	2	256	5	61	190	-	-	767	DOC		
5.8	10.5	5.5	6.0	2.0	2.0	5.1	5.0	6.8	4.8	-	-	5.6	ALS		
108	2	15	77	14	-	27	3	4	12	8	-	135	DISCH	Fracture of forearm	S52
570	34	89	400	47	-	122	5	18	71	28	-	692	DOC		
5.3	17.0	5.9	5.2	3.4	-	4.5	1.7	4.5	5.9	3.5	-	5.1	ALS		

(Cont'd) Table 9.14 ()

2007
Discharges, Days of Care and Average Length of Stay by Principal Diagnosis, Sex and Age Groups 2007

Male						Female						Grand Total	DISCH DOC ALS	Principal Diagnosis	ICD10 Code
Age Groups						Age Groups									
Total	65+	45-64	15-44	1-14	<1 yrs	Total	65+	45-64	15-44	1-14	<1 yrs				
86	36	31	18	-	1	47	18	21	6	1	1	133	DISCH		I42
541	224	209	107	-	1	265	103	123	30	7	2	806	DOC	Cardiomyopathy	
6.3	6.2	6.7	5.9	-	1.0	5.6	5.7	5.9	5.0	7.0	2.0	6.1	ALS		
NA	NA	NA	NA	NA	NA	132	2	74	56	-	NA	132	DISCH		D25
NA	NA	NA	NA	NA	NA	815	20	457	338	-	NA	815	DOC	Leiomyoma of uterus	
NA	NA	NA	NA	NA	NA	6.2	10.0	6.2	6.0	-	NA	6.2	ALS		
83	8	29	46	-	-	45	2	22	21	-	-	128	DISCH		M51
590	85	236	269	-	-	354	27	204	123	-	-	944	DOC	Other intervertebral disc disorders	
7.1	10.6	8.1	5.8	-	-	7.9	13.5	9.3	5.9	-	-	7.4	ALS		
NA	NA	NA	NA	NA	NA	126	-	1	125	-	NA	126	DISCH		O00
NA	NA	NA	NA	NA	NA	485	-	8	477	-	NA	485	DOC	Ectopic pregnancy	
NA	NA	NA	NA	NA	NA	3.8	-	8.0	3.8	-	NA	3.8	ALS		
123	89	34	-	-	-	NA	NA	NA	NA	NA	NA	123	DISCH		N40
909	709	200	-	-	-	NA	NA	NA	NA	NA	NA	909	DOC	Hyperplasia of prostate	
7.4	8.0	5.9	-	-	-	NA	NA	NA	NA	NA	NA	7.4	ALS		
NA	NA	NA	NA	NA	NA	123	-	-	123	-	NA	123	DISCH		O33
NA	NA	NA	NA	NA	NA	634	-	-	634	-	NA	634	DOC		
NA	NA	NA	NA	NA	NA	5.2	-	-	5.2	-	NA	5.2	ALS	Maternal care for known or suspected disproportion	
NA	NA	NA	NA	NA	NA	121	-	2	119	-	NA	121	DISCH		O46
NA	NA	NA	NA	NA	NA	497	-	5	492	-	NA	497	DOC	Antepartum haemorrhage, not elsewhere classified	
NA	NA	NA	NA	NA	NA	4.1	-	2.5	4.1	-	NA	4.1	ALS		

(Cont'd) Table 9.14 ()

2007

Discharges, Days of Care and Average Length of Stay by Principal Diagnosis, Sex and Age Groups 2007

Male						Female						Grand Total	DISCH DOC ALS	Principal Diagnosis	ICD10 Code
Age Groups						Age Groups									
Total	65+	45-64	15-44	1-14	<1 yrs	Total	65+	45-64	15-44	1-14	<1 yrs				
79	2	9	50	15	3	38	1	2	28	5	2	117	DISCH	Epilepsy	G40
214	3	28	139	28	16	158	11	3	121	14	9	372	DOC		
2.7	1.5	3.1	2.8	1.9	5.3	4.2	11.0	1.5	4.3	2.8	4.5	3.2	ALS		
27	-	1	18	8	-	88	-	-	75	13	-	115	DISCH	Poisoning by nonopioid analgesics,	T39
44	-	3	31	10	-	149	-	-	112	37	-	193	DOC		
1.6	-	3.0	1.7	1.3	-	1.7	-	-	1.5	2.8	-	1.7	ALS		
NA	NA	NA	NA	NA	NA	111	-	-	111	-	NA	111	DISCH	Other disorders of amniotic fluid and membranes antipyretics and antirheumatics	O41
NA	NA	NA	NA	NA	NA	359	-	-	359	-	NA	359	DOC		
NA	NA	NA	NA	NA	NA	3.2	-	-	3.2	-	NA	3.2	ALS		
59	8	7	37	7	-	51	16	1	33	1	-	110	DISCH	Keratitis	H16
368	62	84	196	26	-	384	187	19	172	6	-	752	DOC		
6.2	7.8	12.0	5.3	3.7	-	7.5	11.7	19.0	5.2	6.0	-	6.8	ALS		
60	4	9	16	12	19	48	4	9	11	7	17	108	DISCH	Gastro-oesophageal reflux disease	K21
434	20	47	156	74	137	281	10	52	61	59	99	715	DOC		
7.2	5.0	5.2	9.8	6.2	7.2	5.9	2.5	5.8	5.5	8.4	5.8	6.6	ALS		
69	NA	NA	NA	NA	69	38	NA	NA	NA	NA	38	107	DISCH	Respiratory distress of newborn	P22
626	NA	NA	NA	NA	626	346	NA	NA	NA	NA	346	972	DOC		
9.1	NA	NA	NA	NA	9.1	9.1	NA	NA	NA	NA	9.1	9.1	ALS		
85	48	36	1	-	-	20	15	5	-	-	-	105	DISCH	Malignant neoplasm of bronchus and lung	C34
1,323	702	608	13	-	-	251	204	47	-	-	-	1,574	DOC		
15.6	14.6	16.9	13.0	-	-	12.6	13.6	9.4	-	-	-	15.0	ALS		

(Cont'd) Table 9.14 ()

2007
Discharges, Days of Care and Average Length of Stay by Principal Diagnosis, Sex and Age Groups 2007

Male						Female						Grand Total	DISCH DOC ALS	Principal Diagnosis	ICD10 Code
Age Groups						Age Groups									
Total	65+	45-64	15-44	1-14	<1 yrs	Total	65+	45-64	15-44	1-14	<1 yrs				
51	1	1	10	34	5	54	4	6	14	27	3	105	DISCH	Suppurative and unspecified otitis media	H66
138	3	3	32	91	9	176	30	21	43	75	7	314	DOC		
2.7	3.0	3.0	3.2	2.7	1.8	3.3	7.5	3.5	3.1	2.8	2.3	3.0	ALS		
85	10	23	52	-	-	18	5	2	11	-	-	103	DISCH	Duodenal ulcer	K26
465	63	120	282	-	-	89	34	12	43	-	-	554	DOC		
5.5	6.3	5.2	5.4	-	-	4.9	6.8	6.0	3.9	-	-	5.4	ALS		
26	2	13	7	3	1	76	5	17	51	3	-	102	DISCH	Umbilical hernia	K42
146	11	84	39	11	1	438	44	106	278	10	-	584	DOC		
5.6	5.5	6.5	5.6	3.7	1.0	5.8	8.8	6.2	5.5	3.3	-	5.7	ALS		
71	3	8	51	9	-	29	1	9	15	4	-	100	DISCH	Other orthopaedic follow-up care	Z47
366	31	33	254	48	-	147	3	78	51	15	-	513	DOC		
5.2	10.3	4.1	5.0	5.3	-	5.1	3.0	8.7	3.4	4	-	5.1	ALS		
61	5	5	25	26	-	38	5	7	11	15	-	99	DISCH	Fracture of shoulder and upper arm	S42
284	34	34	168	48	-	207	49	61	49	48	-	491	DOC		
4.7	6.8	6.8	6.7	1.8	-	5.4	9.8	8.7	4.5	3.2	-	5.0	ALS		
16	-	2	5	4	5	82	2	4	72	1	3	98	DISCH	() Examination and observation for other reasons	Z04
63	-	10	6	16	31	193	4	17	154	2	16	256	DOC		
3.9	-	5.0	1.2	4.0	6.2	2.4	2.0	4.3	2.1	2.0	5.3	2.6	ALS		
50	1	3	10	31	5	47	1	2	16	28	-	97	DISCH	Nonsuppurative otitis media	H65
147	1	8	55	69	14	138	7	14	53	64	-	285	DOC		
2.9	1.0	2.7	5.5	2.2	2.8	2.9	7.0	7.0	3.3	2.3	-	2.9	ALS		

(Cont'd) Table 9.14 ()

2007
Discharges, Days of Care and Average Length of Stay by Principal Diagnosis, Sex and Age Groups 2007

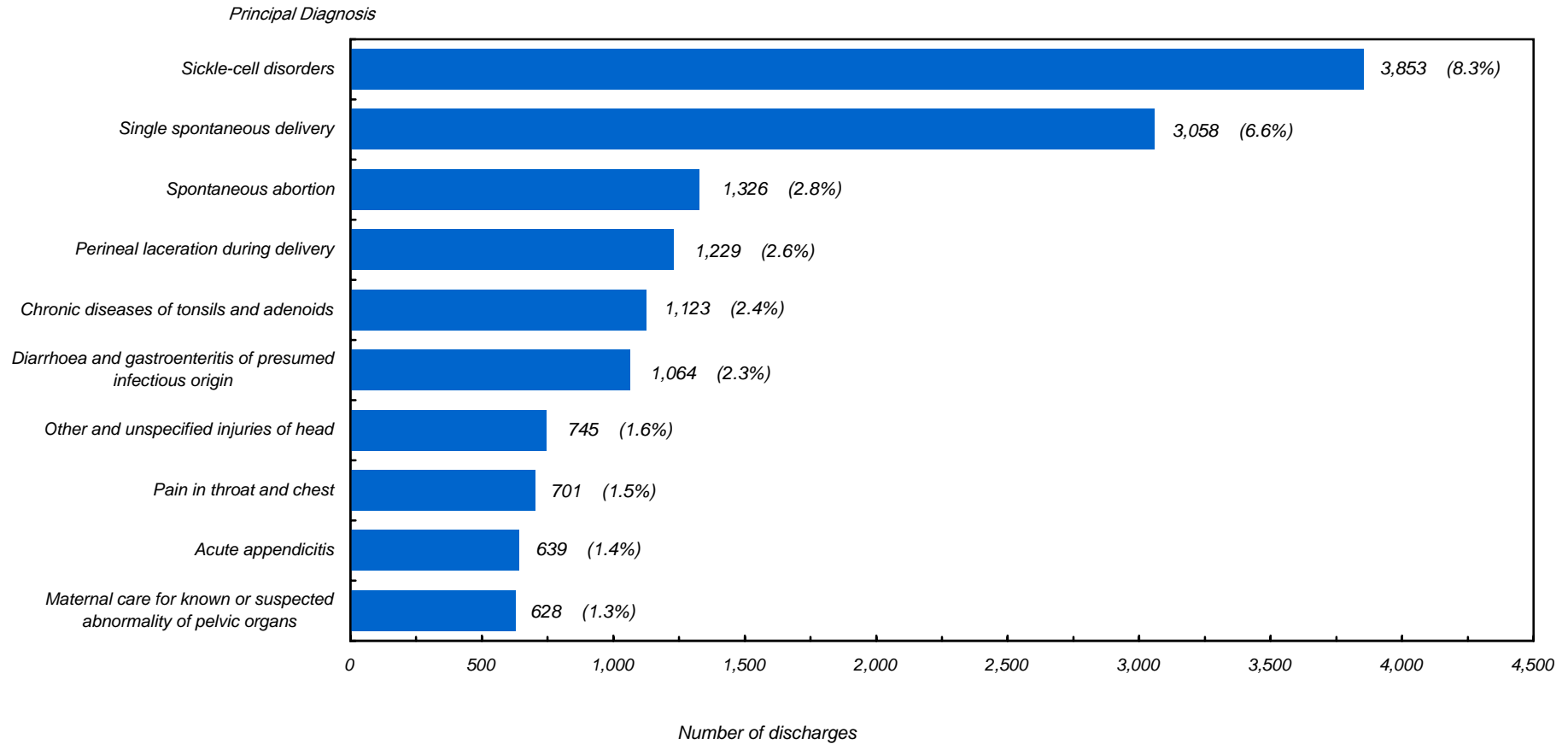
Male						Female						Grand Total	DISCH DOC ALS	Principal Diagnosis	ICD10 Code
Age Groups						Age Groups									
Total	65+	45-64	15-44	1-14	<1 yrs	Total	65+	45-64	15-44	1-14	<1 yrs				
97	-	1	11	69	16	NA	NA	NA	NA	NA	NA	97	DISCH	()	Q53
271	-	8	49	168	46	NA	NA	NA	NA	NA	NA	271	DOC	Undescended testicle	
2.8	-	8.0	4.5	2.4	2.9	NA	NA	NA	NA	NA	NA	2.8	ALS		
56	-	3	8	45	-	39	-	4	12	23	-	95	DISCH	[]	C91
430	-	27	95	308	-	294	-	79	80	135	-	724	DOC	Lymphoid leukaemia	
7.7	-	9.0	11.9	6.8	-	7.5	-	19.8	6.7	5.9	-	7.6	ALS		
62	-	2	36	20	4	33	3	4	10	14	2	95	DISCH		T29
790	-	71	540	166	13	389	75	42	187	80	5	1,179	DOC	Burns and corrosions of multiple body regions	
12.7	-	35.5	15.0	8.3	3.3	11.8	25.0	10.5	18.7	5.7	2.5	12.4	ALS		
46	18	14	8	6	-	46	22	10	8	5	1	92	DISCH		E16
247	90	58	64	35	-	232	109	29	66	12	16	479	DOC	Other disorders of pancreatic internal secretion	
5.4	5.0	4.1	8.0	5.8	-	5.0	5.0	2.9	8.3	2.4	16.0	5.2	ALS		
67	-	-	5	14	48	25	-	5	20	-	-	92	DISCH		Z41
113	-	-	18	39	56	131	-	20	111	-	-	244	DOC	Procedures for purposes other than remedying health state	
1.7	-	-	3.6	2.8	1.2	5.2	-	4.0	5.6	-	-	2.7	ALS		
43	14	12	17	-	-	48	9	37	2	-	-	91	DISCH		C18
465	235	87	143	-	-	749	178	439	132	-	-	1,214	DOC	Malignant neoplasm of colon	
10.8	16.8	7.3	8.4	-	-	15.6	19.8	11.9	66.0	-	-	13.3	ALS		
47	31	14	2	-	-	38	26	9	2	-	1	85	DISCH		I50
299	204	85	10	-	-	215	122	85	5	-	3	514	DOC	Heart failure	
6.4	6.6	6.1	5.0	-	-	5.7	4.7	9.4	2.5	-	3.0	6.0	ALS		

(Cont'd) Table 9.14 ()

2007
Discharges, Days of Care and Average Length of Stay by Principal Diagnosis, Sex and Age Groups 2007

Male						Female						Grand Total	DISCH DOC ALS	Principal Diagnosis	ICD10 Code
Age Groups						Age Groups									
Total	65+	45-64	15-44	1-14	<1 yrs	Total	65+	45-64	15-44	1-14	<1 yrs				
57	-	7	49	1	-	28	-	-	26	2	-	85	DISCH	Pilonidal cyst	L05
334	-	32	297	5	-	187	-	-	177	10	-	521	DOC		
5.9	-	5	6	5	-	6.7	-	-	6.8	5	-	6.1	ALS		
37	10	6	8	9	4	46	7	12	11	13	3	83	DISCH	Other anaemias	D64
135	55	22	27	26	5	154	28	53	31	36	6	289	DOC		
3.6	5.5	3.7	3.4	2.9	1.3	3.3	4.0	4.4	2.8	2.8	2.0	3.5	ALS		
79	1	7	60	11	-	4	1	-	1	2	-	83	DISCH	Injury of eye and orbit	S05
384	7	35	289	53	-	61	9	-	43	9	-	445	DOC		
4.9	7.0	5.0	4.8	4.8	-	15.3	9.0	-	43.0	4.5	-	5.4	ALS		
14,786	1,817	2,486	6,289	2,963	1,231	20,209	1,727	2,264	13,350	2,057	811	34,995	DISCH	100	
85,849	18,237	19,831	31,837	9,844	6,100	93,318	17,013	16,247	48,636	6,892	4,530	179,167	DOC	Total Leading 100 Diagnoses	
5.8	10.0	8.0	5.1	3.3	5.0	4.6	9.9	7.2	3.6	3.4	5.6	5.1	ALS		
5,957	802	1,233	2,148	1,239	535	5,669	694	1,076	2,703	794	402	11,626	DISCH	Total of Others	
45,307	8,364	13,022	13,386	5,771	4,764	40,832	7,146	9,441	15,977	3,886	4,382	86,139	DOC		
7.6	10.4	10.6	6.2	4.7	8.9	7.2	10.3	8.8	5.9	4.9	10.9	7.4	ALS		
20,743	2,619	3,719	8,437	4,202	1,766	25,878	2,421	3,340	16,053	2,851	1,213	46,621	DISCH	Total الجملة	
131,156	26,601	32,853	45,223	15,615	10,864	134,150	24,159	25,688	64,613	10,778	8,912	265,306	DOC		
6.3	10.2	8.8	5.4	3.7	6.2	5.2	10.0	7.7	4.0	3.8	7.3	5.7	ALS		

Figure 9.4
2007
Discharges by The Ten Leading Diagnosis 2007



Reference: Table 9.14

9.14 :

Table 9.15
2007 ()
Discharges (Pre - Post) Operation Days by Department and Sex 2007

<i>Post Operation Days</i>				<i>Pre Operation Days</i>				<i>Disch.</i>	<i>Sex</i>	<i>Department</i>	
<i>Avg.L.S.</i>	<i>Median</i>	<i>Max.</i>	<i>Min.</i>	<i>Avg.L.S.</i>	<i>Median</i>	<i>Max.</i>	<i>Min.</i>				
3.99	2	83	-	3.77	1	341	-	591	Male	Medical	
3.75	1	67	-	2.77	1	50	-	456	Female		
4.35	3	186	-	2.36	1	76	-	3005	Male	Surgical	
4.42	3	76	-	2.68	1	111	-	1604	Female		
5.93	3	161	-	1.75	1	53	-	1353	Male	Orthopedic Surgery & Fracture	
7.82	6	67	-	2.34	1	50	-	646	Female		
7.84	5	70	-	4.72	1	44	-	144	Male	Plastic Surgery & Burns	
4.71	4	30	-	2.12	1	37	-	156	Female		
NA	NA	NA	NA	NA	NA	NA	NA	NA	NA	Male	Obstetrics & Gynecology
1.89	1	38	-	1.42	1	64	-	10164	Female		
2.87	1	76	-	2.75	1	48	-	474	Male	Pediatrics	
2.48	-	32	-	3.36	1	192	-	250	Female		
1.84	2	28	-	1.07	1	14	-	1203	Male	Ear, Nose and Throat	
2.10	2	134	-	1.04	1	17	-	914	Female		
2.67	2	25	-	2.09	1	45	-	508	Male	Ophthalmology	
2.27	2	13	-	2.16	1	30	-	393	Female		
3.21	3	23	-	1.91	1	23	-	143	Male	Dental	
3.57	2	52	-	2.10	2	12	-	111	Female		
7.43	3	242	-	3.35	-	64	-	245	Male	Oncology	
7.36	3	121	-	4.42	-	96	-	247	Female		
13.60	4	669	-	6.87	1	872	-	217	Male	Neurosciences	
9.61	3	159	-	4.13	1	111	-	138	Female		
5.02	1	115	-	4.00	1	34	-	139	Male	Nephrology	
5.91	3	54	-	5.74	1	59	-	117	Female		
8.26	-	55	-	14.10	5	100	-	31	Male	Special Care Baby Unit	
10.14	5	50	-	10.93	6.5	44	1	14	Female		

Avg.L.S. : Average Length of Stay.

Table 9.16
2007 - 2003
Number of Anaesthesia Cases at Ministry of Health by Type of Anaesthesia 2003 - 2007

<i>Type of Anaesthesia</i>	<i>2007</i>	<i>2006</i>	<i>2005</i>	<i>2004</i>	<i>2003</i>
General anaesthesia	14,915	15,308	15,262	15,033	14,685
Local anaesthesia	5,570	3,432	3,189	4,349	3,785
Spinal, epidural & regional	3,262	3,226	4,273	1,999	1,994
Sedation	2,369	2,624	1,503	3,526	1,177
Total	26,116	24,590	24,227	24,907	21,641

Table 9.17

2007
Deaths by Principal Diagnosis, Length of Stay, Nationality and Sex 2007

Total			48 48 hrs & over			48 Less than 48 hrs			Sex	Principal Diagnosis of Death	ICD10 Code
Total	Non-Bah	Bah	Total	Non-Bah	Bah	Total	Non-Bah	Bah			
-	-	-	-	-	-	-	-	-	Male	Intestinal infectious Diseases	A00-A09
3	-	3	1	-	1	2	-	2	Female		
3	-	3	1	-	1	2	-	2	Total		
182	17	165	151	14	137	31	3	28	Male	Other bacterial diseases	A30-A49
164	9	155	143	5	138	21	4	17	Female		
346	26	320	294	19	275	52	7	45	Total		
-	-	-	-	-	-	-	-	-	Male	Infections with a predominantly sexual mode of transmission	A50-A64
1	-	1	1	-	1	-	-	-	Female		
1	-	1	1	-	1	-	-	-	Total		
1	1	-	1	1	-	-	-	-	Male	() Human immunodeficiency virus [HIV] disease	B20-B24
-	-	-	-	-	-	-	-	-	Female		
1	1	-	1	1	-	-	-	-	Total		
3	-	3	3	-	3	-	-	-	Male	Malignant neoplasms of lip, oral cavity and pharynx	C00-C14
1	1	-	1	1	-	-	-	-	Female		
4	1	3	4	1	3	-	-	-	Total		
10	-	10	9	-	9	1	-	1	Male	Malignant neoplasms of digestive organs	C15-C26
8	-	8	8	-	8	-	-	-	Female		
18	-	18	17	-	17	1	-	1	Total		
16	2	14	15	1	14	1	1	-	Male	Malignant neoplasm of respiratory and intrathoracic organs	C30-C39
4	-	4	4	-	4	-	-	-	Female		
20	2	18	19	1	18	1	1	-	Total		

(Cont'd) Table 9.17 ()

2007

Deaths by Principal Diagnosis, Length of Stay, Nationality and Sex 2007

Total			48 48 hrs & over			48 Less than 48 hrs			Sex	Principal Diagnosis of Death	ICD10 Code
Total	Non-Bah	Bah	Total	Non-Bah	Bah	Total	Non-Bah	Bah			
1	-	1	1	-	1	-	-	-	- Male	Melanoma and other malignant neoplasms of skin	C43-C44
-	-	-	-	-	-	-	-	-	- Female		
1	-	1	1	-	1	-	-	-	- Total		
2	-	2	2	-	2	-	-	-	- Male	Malignant neoplasms of mesothelial and soft tissues	C45-C49
-	-	-	-	-	-	-	-	-	- Female		
2	-	2	2	-	2	-	-	-	- Total		
1	-	1	-	-	-	1	-	-	1 Male	Malignant neoplasms of breast	C50
12	1	11	11	1	10	1	-	-	1 Female		
13	1	12	11	1	10	2	-	-	2 Total		
-	-	-	-	-	-	-	-	-	- Male	Malignant neoplasms of female genital organs	C51-C58
3	-	3	3	-	3	-	-	-	- Female		
3	-	3	3	-	3	-	-	-	- Total		
7	-	7	7	-	7	-	-	-	- Male	Malignant neoplasms of male genital organs	C60-C63
-	-	-	-	-	-	-	-	-	- Female		
7	-	7	7	-	7	-	-	-	- Total		
5	1	4	4	-	4	1	1	-	- Male	Malignant neoplasms of urinary tract	C64-C68
-	-	-	-	-	-	-	-	-	- Female		
5	1	4	4	-	4	1	1	-	- Total		
6	1	5	5	1	4	1	-	-	1 Male	Malignant neoplasms of eye, brain & other parts of central nervous system	C69-C72
2	-	2	2	-	2	-	-	-	- Female		
8	1	7	7	1	6	1	-	-	1 Total		

(Cont'd) Table 9.17 ()

2007

Deaths by Principal Diagnosis, Length of Stay, Nationality and Sex 2007

Total			48 48 hrs & over			48 Less than 48 hrs			Sex	Principal Diagnosis of Death	ICD10 Code
Total	Non-Bah	Bah	Total	Non-Bah	Bah	Total	Non-Bah	Bah			
1	-	1	1	-	1	-	-	-	- Male	Malignant neoplasms of thyroid and other endocrine glands	C73-C75
2	-	2	2	-	2	-	-	- Female			
3	-	3	3	-	3	-	-	- Total			
4	-	4	3	-	3	1	-	1 Male	Malignant neoplasms of ill-defined, secondary and unspecified sites	C76-C80	
-	-	-	-	-	-	-	-	- Female			
4	-	4	3	-	3	1	-	1 Total			
10	1	9	9	1	8	1	-	1 Male	Malignant neoplasm of lymphoid, haematopoietic and related tissue	C81-C96	
2	-	2	2	-	2	-	-	- Female			
12	1	11	11	1	10	1	-	1 Total			
1	1	-	1	1	-	-	-	- Male	Malignant neoplasm of independent (primary) multiple sites	C97	
-	-	-	-	-	-	-	-	- Female			
1	1	-	1	1	-	-	-	- Total			
2	1	1	1	-	1	1	1	- Male	Benign Neoplasm	D10-D36	
2	1	1	1	-	1	1	1	- Female			
4	2	2	2	-	2	2	2	- Total			
1	-	1	1	-	1	-	-	- Male	Neoplasms of uncertain or unknown behaviour	D37-D48	
2	-	2	2	-	2	-	-	- Female			
3	-	3	3	-	3	-	-	- Total			
2	-	2	1	-	1	1	-	1 Male	Haemolytic anaemias	D55-D59	
1	-	1	1	-	1	-	-	- Female			
3	-	3	2	-	2	1	-	1 Total			

(Cont'd) Table 9.17 ()

2007

Deaths by Principal Diagnosis, Length of Stay, Nationality and Sex 2007

Total			48 48 hrs & over			48 Less than 48 hrs			Sex	Principal Diagnosis of Death	ICD10 Code
Total	Non-Bah	Bah	Total	Non-Bah	Bah	Total	Non-Bah	Bah			
1	-	1	1	-	1	-	-	-	Male	Aplastic and other anaemias	D60-D64
-	-	-	-	-	-	-	-	-	Female		
1	-	1	1	-	1	-	-	-	Total		
1	1	-	-	-	-	1	1	-	Male	Coagulation defects, purpura and other haemorrhagic conditions	D65-D69
5	1	4	5	1	4	-	-	-	Female		
6	2	4	5	1	4	1	1	-	Total		
1	1	-	1	1	-	-	-	-	Male	Disorders of thyroid gland	E00-E07
-	-	-	-	-	-	-	-	-	Female		
1	1	-	1	1	-	-	-	-	Total		
2	-	2	2	-	2	-	-	-	Male	Diabetes mellitus	E10-E14
2	1	1	2	1	1	-	-	-	Female		
4	1	3	4	1	3	-	-	-	Total		
1	-	1	1	-	1	-	-	-	Male	Other disorders of glucose regulation and pancreatic internal secretion	E15-E16
-	-	-	-	-	-	-	-	-	Female		
1	-	1	1	-	1	-	-	-	Total		
2	1	1	2	1	1	-	-	-	Male	Metabolic disorders	E70-E90
4	-	4	4	-	4	-	-	-	Female		
6	1	5	6	1	5	-	-	-	Total		
1	-	1	1	-	1	-	-	-	Male	Inflammatory diseases of the central nervous system	G00-G09
4	-	4	4	-	4	-	-	-	Female		
5	-	5	5	-	5	-	-	-	Total		

(Cont'd) Table 9.17 ()

2007

Deaths by Principal Diagnosis, Length of Stay, Nationality and Sex 2007

Total			48 48 hrs & over			48 Less than 48 hrs			Sex	Principal Diagnosis of Death	ICD10 Code
Total	Non-Bah	Bah	Total	Non-Bah	Bah	Total	Non-Bah	Bah			
-	-	-	-	-	-	-	-	-	Male	Systemic atrophies primarily affecting the central nervous system	G10-G13
1	-	1	1	-	1	-	-	-	Female		
1	-	1	1	-	1	-	-	-	Total		
1	-	1	1	-	1	-	-	-	Male	Demyelinating diseases of the central nervous system	G35-G37
-	-	-	-	-	-	-	-	-	Female		
1	-	1	1	-	1	-	-	-	Total		
4	2	2	4	2	2	-	-	-	Male	Other disorders of the nervous system	G90-G99
6	-	6	6	-	6	-	-	-	Female		
10	2	8	10	2	8	-	-	-	Total		
21	3	18	11	1	10	10	2	8	Male	Hypertensive diseases	I10-I15
12	1	11	12	1	11	-	-	-	Female		
33	4	29	23	2	21	10	2	8	Total		
26	9	17	14	2	12	12	7	5	Male	Ischaemic heart disease	I20-I25
17	1	16	8	-	8	9	1	8	Female		
43	10	33	22	2	20	21	8	13	Total		
7	-	7	6	-	6	1	-	1	Male	Pulmonary heart diseases and diseases of pulmonary circulation	I26-I28
9	1	8	9	1	8	-	-	-	Female		
16	1	15	15	1	14	1	-	1	Total		
39	7	32	33	5	28	6	2	4	Male	Other forms of heart diseases	I30-I52
26	2	24	22	1	21	4	1	3	Female		
65	9	56	55	6	49	10	3	7	Total		

(Cont'd) Table 9.17 ()

2007

Deaths by Principal Diagnosis, Length of Stay, Nationality and Sex 2007

Total			48 48 hrs & over			48 Less than 48 hrs			Sex	Principal Diagnosis of Death	ICD10 Code
Total	Non-Bah	Bah	Total	Non-Bah	Bah	Total	Non-Bah	Bah			
36	14	22	32	12	20	4	2	2	Male	Cerebrovascular diseases	I60-I69
39	6	33	35	6	29	4	-	4	Female		
75	20	55	67	18	49	8	2	6	Total		
1	1	-	1	1	-	-	-	-	Male	Diseases of veins, lymphatic vessels and lymph nodes, not elsewhere classified	I80-I89
1	1	-	1	1	-	-	-	-	Female		
2	2	-	2	2	-	-	-	-	Total		
7	-	7	7	-	7	-	-	-	Male	Influenza and pneumonia	J10-J18
5	-	5	5	-	5	-	-	-	Female		
12	-	12	12	-	12	-	-	-	Total		
1	-	1	1	-	1	-	-	-	Male	Other diseases of upper respiratory tract	J30-J39
-	-	-	-	-	-	-	-	-	Female		
1	-	1	1	-	1	-	-	-	Total		
9	1	8	8	1	7	1	-	1	Male	Chronic lower respiratory diseases	J40-J47
6	-	6	6	-	6	-	-	-	Female		
15	1	14	14	1	13	1	-	1	Total		
6	1	5	5	1	4	1	-	1	Male	Lung diseases due to external agents	J60-J70
11	-	11	8	-	8	3	-	3	Female		
17	1	16	13	1	12	4	-	4	Total		
7	2	5	3	-	3	4	2	2	Male	Other respiratory diseases principally affecting the interstitium	J80-J84
2	-	2	2	-	2	-	-	-	Female		
9	2	7	5	-	5	4	2	2	Total		

(Cont'd) Table 9.17 ()

2007

Deaths by Principal Diagnosis, Length of Stay, Nationality and Sex 2007

Total			48 48 hrs & over			48 Less than 48 hrs			Sex	Principal Diagnosis of Death	ICD10 Code
Total	Non-Bah	Bah	Total	Non-Bah	Bah	Total	Non-Bah	Bah			
1	1	-	1	1	-	-	-	-	Male	Suppurative and necrotic conditions of lower respiratory tract	J85-J86
-	-	-	-	-	-	-	-	-	Female		
1	1	-	1	1	-	-	-	-	Total		
2	1	1	2	1	1	-	-	-	Male	Other diseases of pleura	J90-J94
1	-	1	1	-	1	-	-	-	Female		
3	1	2	3	1	2	-	-	-	Total		
18	1	17	14	1	13	4	-	4	Male	Other diseases of the respiratory system	J95-J99
15	-	15	12	-	12	3	-	3	Female		
33	1	32	26	1	25	7	-	7	Total		
3	-	3	3	-	3	-	-	-	Male	Other diseases of intestines	K55-K63
1	-	1	1	-	1	-	-	-	Female		
4	-	4	4	-	4	-	-	-	Total		
1	-	1	1	-	1	-	-	-	Male	Diseases of peritoneum	K65-K67
-	-	-	-	-	-	-	-	-	Female		
1	-	1	1	-	1	-	-	-	Total		
13	5	8	11	3	8	2	2	-	Male	Diseases of liver	K70-K77
7	1	6	6	1	5	1	-	1	Female		
20	6	14	17	4	13	3	2	1	Total		
1	1	-	1	1	-	-	-	-	Male	Disorders of gallbladder, biliary tract and pancreas	K80-K87
1	-	1	1	-	1	-	-	-	Female		
2	1	1	2	1	1	-	-	-	Total		

(Cont'd) Table 9.17 ()

2007

Deaths by Principal Diagnosis, Length of Stay, Nationality and Sex 2007

Total			48 48 hrs & over			48 Less than 48 hrs			Sex	Principal Diagnosis of Death	ICD10 Code
Total	Non-Bah	Bah	Total	Non-Bah	Bah	Total	Non-Bah	Bah			
8	1	7	7	1	6	1	-	1	Male	Other diseases of the digestive system	K90-K93
-	-	-	-	-	-	-	-	-	Female		
8	1	7	7	1	6	1	-	1	Total		
-	-	-	-	-	-	-	-	-	Male	Other disorders of the skin and subcutaneous tissue	L80-L99
1	1	-	-	-	-	1	1	-	Female		
1	1	-	-	-	-	1	1	-	Total		
-	-	-	-	-	-	-	-	-	Male	Systemic connective tissue disorders	M30-M36
1	-	1	1	-	1	-	-	-	Female		
1	-	1	1	-	1	-	-	-	Total		
-	-	-	-	-	-	-	-	-	Male	Soft tissue disorders	M60-M79
1	-	1	1	-	1	-	-	-	Female		
1	-	1	1	-	1	-	-	-	Total		
-	-	-	-	-	-	-	-	-	Male	Renal failure	N17-N19
4	-	4	4	-	4	-	-	-	Female		
2	-	2	2	-	2	-	-	-	Total		
6	-	6	6	-	6	-	-	-	Total		
1	-	1	1	-	1	-	-	-	Male	Other diseases of the urinary system	N30-N39
2	-	2	1	-	1	1	-	1	Female		
3	-	3	2	-	2	1	-	1	Total		
-	-	-	-	-	-	-	-	-	Male	Fetus and newborn affected by maternal factors and by complications of pregnancy, labour and delivery	P00-P04
1	-	1	1	-	1	-	-	-	Female		
1	-	1	1	-	1	-	-	-	Total		

(Cont'd) Table 9.17 ()

2007

Deaths by Principal Diagnosis, Length of Stay, Nationality and Sex 2007

Total			48 48 hrs & over			48 Less than 48 hrs			Sex	Principal Diagnosis of Death	ICD10 Code
Total	Non-Bah	Bah	Total	Non-Bah	Bah	Total	Non-Bah	Bah			
11	4	7	10	4	6	1	-	1	Male	Disorders related to length of gestation and fetal growth	P05-P08
12	3	9	6	2	4	6	1	5	Female		
23	7	16	16	6	10	7	1	6	Total		
6	2	4	3	1	2	3	1	2	Male	Respiratory and cardiovascular disorders specific to the perinatal period	P20-P29
11	3	8	6	2	4	5	1	4	Female		
17	5	12	9	3	6	8	2	6	Total		
7	2	5	7	2	5	-	-	-	Male	Infections specific to the perinatal period	P35-P39
8	4	4	7	4	3	1	-	1	Female		
15	6	9	14	6	8	1	-	1	Total		
2	-	2	2	-	2	-	-	-	Male	Haemorrhagic and haematological disorders of fetus and newborn	P50-P61
1	1	-	1	1	-	-	-	-	Female		
3	1	2	3	1	2	-	-	-	Total		
-	-	-	-	-	-	-	-	-	Male	Transitory endocrine and metabolic disorders specific to fetus and newborn	P70-P74
1	-	1	1	-	1	-	-	-	Female		
1	-	1	1	-	1	-	-	-	Total		
-	-	-	-	-	-	-	-	-	Male	Digestive system disorders of fetus and newborn	P75-P78
1	1	-	-	-	-	1	1	-	Female		
1	1	-	-	-	-	1	1	-	Total		
-	-	-	-	-	-	-	-	-	Male	Conditions involving the integument and temperature regulation of fetus and newborn	P80-P83
1	-	1	-	-	-	1	-	1	Female		
1	-	1	-	-	-	1	-	1	Total		

(Cont'd) Table 9.17 ()

2007

Deaths by Principal Diagnosis, Length of Stay, Nationality and Sex 2007

Total			48 48 hrs & over			48 Less than 48 hrs			Sex	Principal Diagnosis of Death	ICD10 Code
Total	Non-Bah	Bah	Total	Non-Bah	Bah	Total	Non-Bah	Bah			
1	-	1	-	-	-	1	-	1	Male	Congenital malformations of the nervous system	Q00-Q07
-	-	-	-	-	-	-	-	-	Female		
1	-	1	-	-	-	1	-	1	Total		
3	-	3	2	-	2	1	-	1	Male	Congenital malformations of the circulatory system	Q20-Q28
1	-	1	1	-	1	-	-	-	Female		
4	-	4	3	-	3	1	-	1	Total		
1	-	1	1	-	1	-	-	-	Male	التشوهات الخلقية الأخرى بالجهاز الهضمي Other congenital malformations of the digestive system	Q38-Q45
-	-	-	-	-	-	-	-	-	Female		
1	-	1	1	-	1	-	-	-	Total		
2	-	2	-	-	-	2	-	2	Male	التشوهات الخلقية بالجهاز البولي Congenital malformations of the urinary system	Q60-Q64
1	1	-	-	-	-	1	1	-	Female		
3	1	2	-	-	-	3	1	2	Total		
1	-	1	-	-	-	1	-	1	Male	Congenital malformations and deformations of the musculoskeletal system	Q65-Q79
-	-	-	-	-	-	-	-	-	Female		
1	-	1	-	-	-	1	-	1	Total		
2	-	2	1	-	1	1	-	1	Male	Other congenital malformations	Q80-Q89
1	1	-	1	1	-	-	-	-	Female		
3	1	2	2	1	1	1	-	1	Total		
2	-	2	2	-	2	-	-	-	Male	Chromosomal abnormalities, not elsewhere classified	Q90-Q99
2	-	2	1	-	1	1	-	1	Female		
4	-	4	3	-	3	1	-	1	Total		
2	1	1	2	1	1	-	-	-	Male	Symptoms and signs involving the circulatory and respiratory systems	R00-R09
3	-	3	2	-	2	1	-	1	Female		
5	1	4	4	1	3	1	-	1	Total		

(Cont'd) Table 9.17 ()

2007

Deaths by Principal Diagnosis, Length of Stay, Nationality and Sex 2007

Total			48 48 hrs & over			48 Less than 48 hrs			Sex	Principal Diagnosis of Death	ICD10 Code
Total	Non-Bah	Bah	Total	Non-Bah	Bah	Total	Non-Bah	Bah			
4	-	4	3	-	3	1	-	1	Male	General symptoms and signs	R50-R69
6	2	4	5	2	3	1	-	1	Female		
10	2	8	8	2	6	2	-	2	Total		
1	-	1	-	-	-	1	-	1	Male	النتائج غير الطبيعية عند فحص الدم دون تشخيص Abnormal findings on examination of blood, without diagnoses	R70-R79
-	-	-	-	-	-	-	-	-	Female		
1	-	1	-	-	-	1	-	1	Total		
1	-	1	1	-	1	-	-	-	Male	نتائج غير طبيعية عند التصوير التشخيصي أو دراسات الوظائف دون تشخيص Abnormal findings on diagnostic imaging and in function studies, without diagnoses	R90-R94
-	-	-	-	-	-	-	-	-	Female		
1	-	1	1	-	1	-	-	-	Total		
1	-	1	1	-	1	-	-	-	Male	الأسباب غير المعروفة أو المجهولة للوفاة Ill-defined and unknown causes of mortality	R95-R99
-	-	-	-	-	-	-	-	-	Female		
1	-	1	1	-	1	-	-	-	Total		
18	10	8	15	9	6	3	1	2	Male	اصابات الرأس Injuries to the head	S00-S09
3	-	3	3	-	3	-	-	-	Female		
21	10	11	18	9	9	3	1	2	Total		
1	-	1	1	-	1	-	-	-	Male	اصابات الصدر Injuries to the thorax	S20-S29
-	-	-	-	-	-	-	-	-	Female		
1	-	1	1	-	1	-	-	-	Total		
1	-	1	1	-	1	-	-	-	Male	اصابات الكتف وأعلى الذراع Injuries to the shoulder and upper arm	S40-S49
-	-	-	-	-	-	-	-	-	Female		
1	-	1	1	-	1	-	-	-	Total		
1	-	1	1	-	1	-	-	-	Male	اصابات الورك والفخذ Injuries to the hip and thigh	S70-S79
1	-	1	1	-	1	-	-	-	Female		
2	-	2	2	-	2	-	-	-	Total		

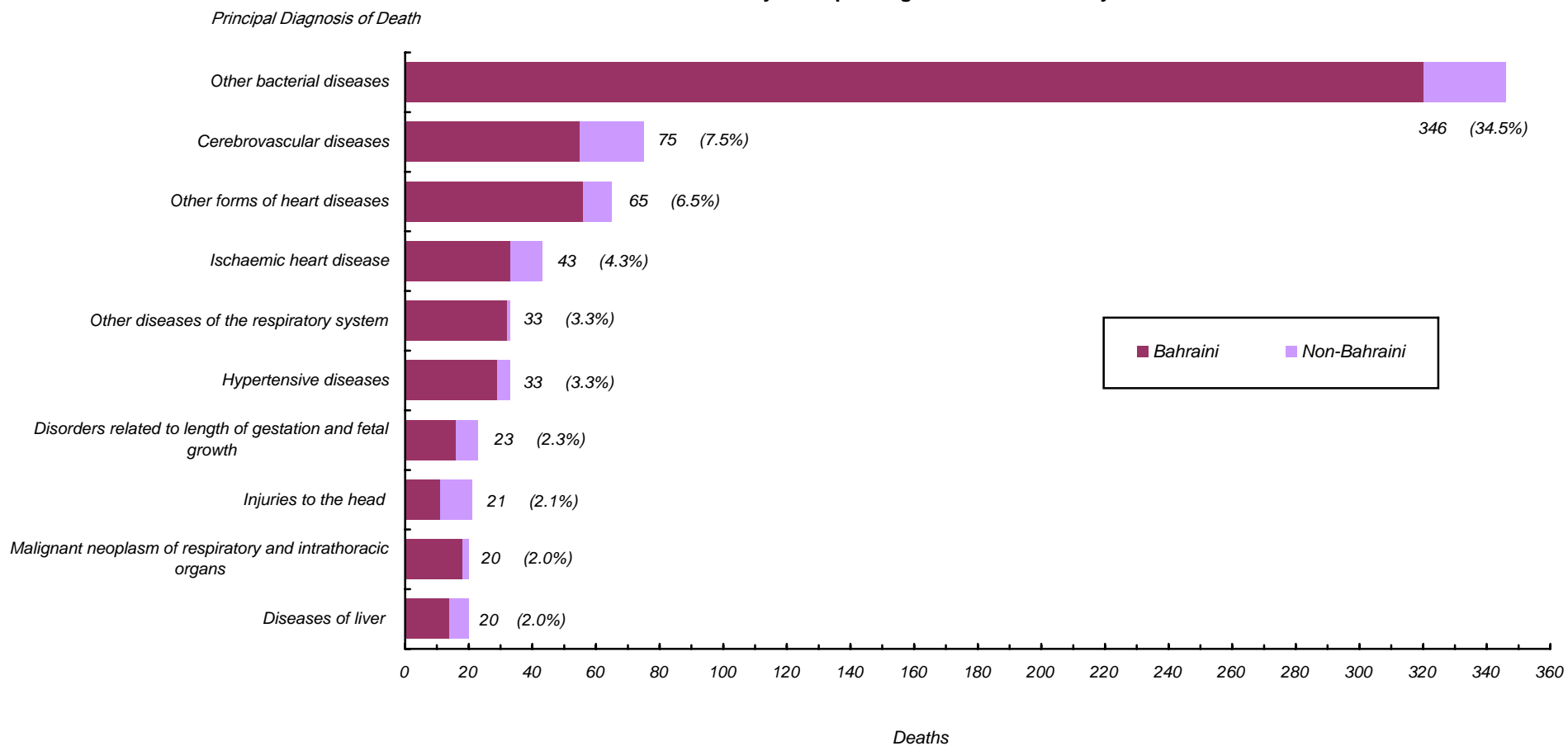
(Cont'd) Table 9.17 ()

2007

Deaths by Principal Diagnosis, Length of Stay, Nationality and Sex 2007

Total			48 48 hrs & over			48 Less than 48 hrs			Sex	Principal Diagnosis of Death	ICD10 Code
Total	Non-Bah	Bah	Total	Non-Bah	Bah	Total	Non-Bah	Bah			
1	1	-	1	1	-	-	-	-	Male	Injuries to unspecified part of trunk, limb or body region	T08-T14
-	-	-	-	-	-	-	-	-	Female		
1	1	-	1	1	-	-	-	-	Total		
1	-	1	1	-	1	-	-	-	Male	Burns and corrosions of external body surface specified by site	T20-T25
-	-	-	-	-	-	-	-	-	Female		
1	-	1	1	-	1	-	-	-	Total		
2	1	1	2	1	1	-	-	-	Male	Burns and corrosions of multiple and unspecified body regions	T29-T32
1	-	1	1	-	1	-	-	-	Female		
3	1	2	3	1	2	-	-	-	Total		
3	-	3	2	-	2	1	-	1	Male	Poisoning by drugs, medicaments and biological substances	T36-T50
1	-	1	1	-	1	-	-	-	Female		
4	-	4	3	-	3	1	-	1	Total		
2	1	1	1	-	1	1	1	-	Male	Toxic effects of substances chiefly nonmedicinal as to source	T51-T65
-	-	-	-	-	-	-	-	-	Female		
2	1	1	1	-	1	1	1	-	Total		
-	-	-	-	-	-	-	-	-	Male	Complications of surgical and medical care, not elsewhere classified	T80-T88
1	1	-	1	1	-	-	-	-	Female		
1	1	-	1	1	-	-	-	-	Total		
558	100	458	454	73	381	104	27	77	Male	Total	
446	45	401	377	33	344	69	12	57	Female		
1,004	145	859	831	106	725	173	39	134	Total		

Figure 9.5
2007
Deaths by Principal Diagnosis and Nationality 2007



Reference: Table 9.17

9.17 :

Table 9.18
2007
Out-Patient Visits by Department, Nationality and Sex 2007

<i>Department / Clinic</i>	<i>Total</i>			<i>Non-Bahraini</i>			<i>Bahraini</i>			<i>/</i>
	<i>Total</i>	<i>Female</i>	<i>Male</i>	<i>Total</i>	<i>Female</i>	<i>Male</i>	<i>Total</i>	<i>Female</i>	<i>Male</i>	
Accident & Emergency	306,136	135,076	171,060	68,949	22,216	46,733	237,187	112,860	124,327	
Out-Patient Clinics	212,151	119,181	92,970	30,879	13,412	17,467	181,272	105,769	75,503	
Medical	42,130	24,291	17,839	6,435	2525	3910	35,695	21766	13929	
Surgical	20,238	8,930	11,308	3,104	1096	2008	17,134	7834	9300	
Orthopedic & Fracture	22,861	11,298	11,563	3,669	773	2896	19,192	10525	8667	
Plastic Surgery & Burns	2,215	955	1,260	545	80	465	1,670	875	795	
Ophthalmology	27,118	12,641	14,477	4,195	1017	3178	22,923	11624	11299	
E.N.T.	27,261	12,925	14,336	3,134	1176	1958	24,127	11749	12378	
Paediatric	22,141	10,426	11,715	2,657	1219	1438	19,484	9207	10277	
Nephrology	3,202	1,665	1,537	327	113	214	2,875	1552	1323	
Oncology	7,488	5,048	2,440	781	453	328	6,707	4595	2112	
Clinical Neurosciences	8,084	4,476	3,608	1,043	437	606	7,041	4039	3002	
Obstetrics & Gynecology	23,054	23,047	7	4,291	4288	3	18,763	18759	4	
Dental	6,359	3,479	2,880	698	235	463	5,661	3244	2417	
Total	518,287	254,257	264,030	99,828	35,628	64,200	418,459	218,629	199,830	

Table 9.19
2007 - 2003
Out-Patient Visits by Department 2003 - 2007

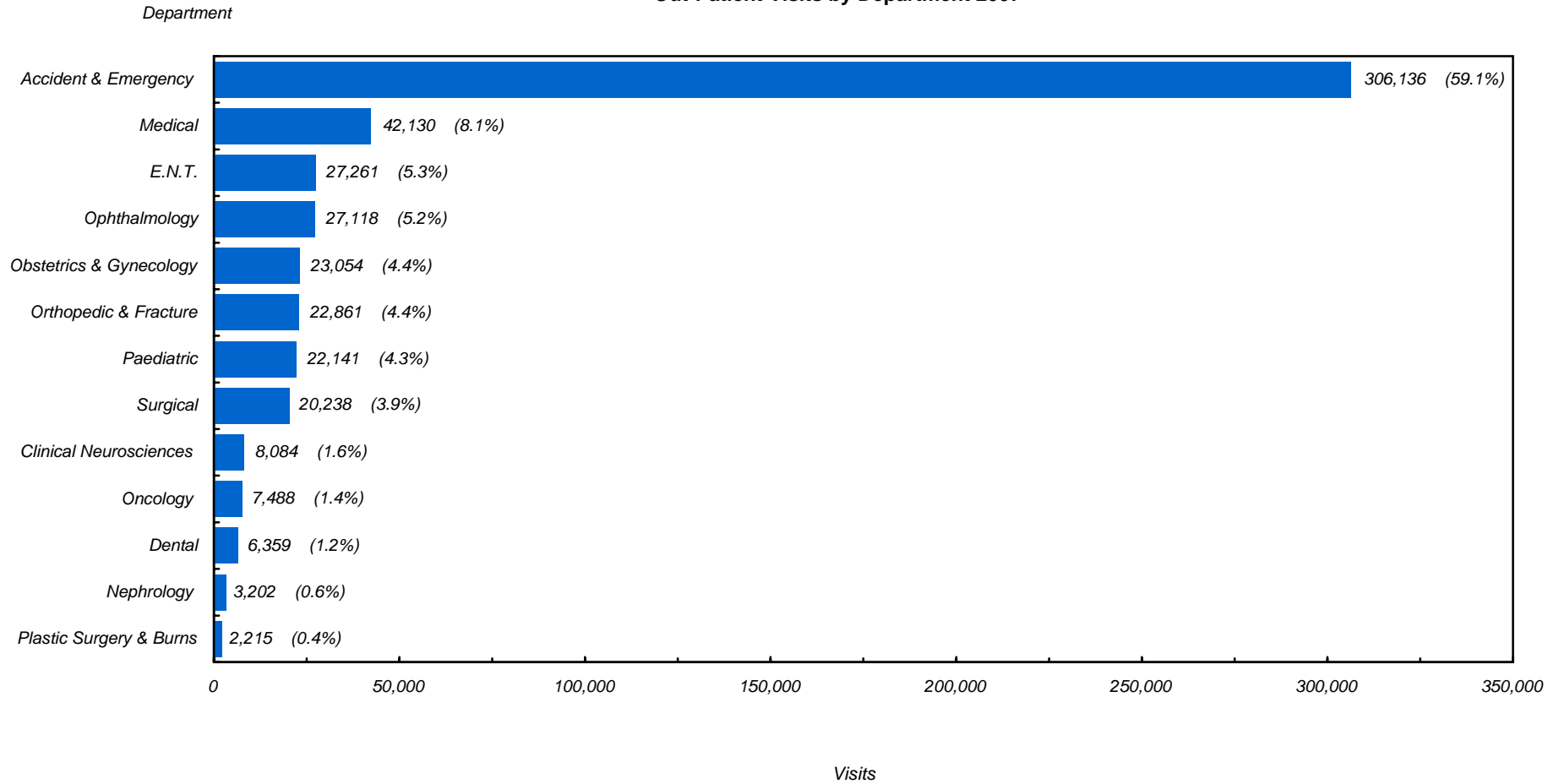
<i>Department / Clinic</i>	<i>2007</i>	<i>2006</i>	<i>2005</i>	<i>2004</i>	<i>2003</i>	<i>/</i>
Accident & Emergency	306,136	303,315	280,629	283,818	288,597	
Out-Patient Clinics	212,151	181,047	199,915	188,774	203,059	
Medical	42,130	35,901	34,698	42,162	50,808	
Surgical	20,238	18,643	21,170	23,572	28,462	
Orthopedic & Fracture	22,861	24,021	28,529	27,483	27,258	
Plastic Surgery & Burns	2,215	2,187	2,554	1,873	2,071	
Ophthalmology	27,118	20,570	21,054	19,693	20,660	
E.N.T.	27,261	23,272	28,043	27,583	27,369	
Paediatric	22,141	18,938	20,670	18,114	18,511	
Nephrology *	3,202	1,589	NA	NA	NA	*
Oncology *	7,488	5,284	5,324	NA	NA	*
Clinical Neurosciences *	8,084	6,233	5,322	NA	NA	*
Obstetrics & Gynecology	23,054	18,383	26,436	22,845	22,644	
Gynecology	10,614	10,113	11,287	10,862	11,924	
Antenatal	12,440	8,270	15,149	11,983	10,720	
Dental	6,359	6,026	6,115	5,449	5,276	
Total	518,287	484,362	480,544	472,592	491,656	
Other Services						
Physiotherapy (SMC)	95,716	95,017	91,113	83,352	91,143	()
Occupational Therapy	7,384	5,155	7,833	8,341	7,811	
Day Case Unit	8,915	7,595	7,654	7,460	7,089	

* Separated from Medical Department since 2005.

. 2005

*

Figure 9.6
2007
Out-Patient Visits by Department 2007



Reference: Table 9.18

9.18 :

Table 9.20
2007
Laboratory Tests by Source of Specimens 2007

<i>Source of Specimens</i>	<i>Total</i>	<i>Bacterio- logy</i>	<i>Parasito- logy</i>	<i>Sero- logy</i>	<i>Immuno- logy</i>	<i>Cyto- logy</i>	<i>Histo- logy</i>	<i>FNAC</i>	<i>Blood Bank</i>	<i>Haema- tology</i>	<i>Bioche- mistry</i>	
Salmaniya Medical Complex	5,774,317	474,814	138,024	49,942	13,100	3,357	9,283	957	405,861	2,061,048	2,617,931	
Limited Private Practice	4,606	674	72	134	61	6	3	14	17	1,352	2,273	
Maternity Hospitals	69,546	16,648	191	1,432	28	14	56	5	1,512	8,850	40,810	
Psychiatric Hospital	40,066	1,590	597	1,059	42	5	2	-	21	11,461	25,289	
Health Centers *	1,325,934	206,934	793	33,937	1,004	6,009	47	2	6,109	51,821	1,019,278	*
Medical Commission	4,372	-	-	-	-	-	-	-	-	1,338	3,034	
Public Health	1,434	86	5	20	-	-	-	-	9	408	906	
College of Health Sciences	-	-	-	-	-	-	-	-	-	-	-	
Military Hospital	1,051	78	-	111	65	-	4	-	43	84	666	
Directorate of Health & Social Affairs - (Ministry of Interior)	3,479	1,568	-	184	16	56	3	-	-	306	1,346	-
Private Hospitals	5,710	58	-	23	5	60	134	17	2,893	1,341	1,179	()
Private Clinics	4,136	308	18	72	18	-	2	6	2	1,852	1,858	
Private Companies	3,409	12	2	108	-	-	-	-	97	1,605	1,585	
Others	368	-	-	1	-	-	-	-	-	172	195	
Total	7,238,428	702,770	139,702	87,023	14,339	9,507	9,534	1,001	416,564	2,141,638	3,716,350	

* Excluding Al Razi Health Center which is specifically provided for labour force / workers & pre-employment examination .

*

Table 9.21
2007
Radiology Procedures by Source of Request 2007

<i>Radiology Procedure</i>	<i>Total</i>	<i>* LPP *</i>	<i>SMC</i>	<i>Accident & Emergency</i>	
Skull	9,285	214	3,013	6,058	
Ultrasound	21,569	509	19,686	1,374	
Spines (All Views)	13,438	174	4,813	8,451	
Extremities & Joints	66,200	227	24,465	41,508	
Chest (All Views)	98,191	118	68,799	29,274	
Abdomen	15,701	30	2,984	12,687	
Mammography	2,485	115	2,365	5	
Hysterosalpingogram	657	101	556	-	
I.V.U. (All G.U.)	2,647	81	2,540	26	
Barium Swallow & Barium Meal	1,866	82	1,777	7	
Small Bowel Meal	72	3	68	1	
Ultrasound portable	232	-	230	2	
Barium Enema	531	60	466	5	
Fluoroscopy	148	-	147	1	
Sinogram (Fistulogram)	44	2	42	-	
Sialogram	41	2	39	-	
Dacrocystogram	33	2	31	-	
Ultrasound Guided Biopsy	117	4	113	-	()
Myelogram	1	-	1	-	
Angiogram	312	2	309	1	
Venogram	135	2	133	-	
Skeletal Survey	44	-	44	-	
C.T. Scan	12,557	145	10,224	2,188	

(Coun't) Table 9.21 ()
2007
Radiology Procedures by Source of Request 2007

<i>Radiology Procedure</i>	<i>Total</i>	<i>* LPP *</i>	<i>SMC</i>	<i>Accident & Emergency</i>	
E.S.W.L.	553	-	539	14	
E.R.C.P.	108	-	107	1	
Percutaneous Nephro Lithotripsy (P.C.N.L.)	2	-	2	-	
Cavernogram	1	-	1	-	
Mobiles (Ward Radiography)	12,250	1	7,955	4,294	
Nuclear Medicine / RNI	2,569	269	2,299	1	/
Magnetic Resonance Imaging (MRI)	6,698	232	6,419	47	
Bone Mineral Densitometry (BMD)	1,512	215	1,293	4	
OPG	2,860	860	1,666	334	
Operation Theater	2,027	2	1,982	43	
Copy & CD-Rom	162	-	158	4	
Percutaneous Transhepatic Cholangiogram (PTC)	8	1	7	-	
Ultrasound (National Campaign)	2	-	2	-	
Mammography (National Campaign)	506	-	506	-	
Total	275,564	3,453	165,781	106,330	
Interrupted	6	1	2	3	
Grand Total	275,570	3,454	165,783	106,333	

* LPP : Limited private practice carried out by physicians in Ministry of Health hospitals.

: () *

2007 ()
Table 9.22
Discharges (Alive and Dead) from Special Care Baby Unit by Month and Sex 2007

<i>Month</i>	<i>Total</i>				<i>Dead</i>				<i>Alive</i>			
	<i>Total</i>		<i>Female</i>	<i>Male</i>	<i>Total</i>		<i>Female</i>	<i>Male</i>	<i>Total</i>		<i>Female</i>	<i>Male</i>
	<i>%</i>	<i>No.</i>			<i>%</i>	<i>No.</i>			<i>%</i>	<i>No.</i>		
January	8.4	67	28	39	10.4	8	4	4	8.2	59	24	35
February	7.2	57	27	30	5.2	4	2	2	7.4	53	25	28
March	8.3	66	22	44	3.9	3	2	1	8.8	63	20	43
April	10.4	83	37	46	10.4	8	4	4	10.4	75	33	42
May	7.4	59	25	34	9.1	7	3	4	7.2	52	22	30
June	7.2	57	22	35	9.1	7	2	5	6.9	50	20	30
July	8.4	67	31	36	11.7	9	6	3	8.1	58	25	33
August	7.3	58	28	30	6.5	5	3	2	7.4	53	25	28
September	7.8	62	27	35	6.5	5	4	1	7.9	57	23	34
October	9.4	75	32	43	9.1	7	3	4	9.4	68	29	39
November	8.7	69	30	39	5.2	4	2	2	9.0	65	28	37
December	9.7	77	41	36	13.0	10	7	3	9.3	67	34	33
Total	100.0	797	350	447	100.0	77	42	35	100.0	720	308	412

Table 9.23

2007

Discharges from Special Care Baby Unit by Geographical Region, Nationality and Sex 2007

Geographical Region	Total			Non-Bahraini			Bahraini		
	Total	Female	Male	Total	Female	Male	Total	Female	Male
Hidd	13	7	6	1	1	-	12	6	6
Muharraq	120	51	69	24	10	14	96	41	55
Manama	147	62	85	86	31	55	61	31	30
Jidhafs	78	32	46	4	1	3	74	31	43
Northern	69	36	33	10	5	5	59	31	28
Sitra	69	30	39	4	1	3	65	29	36
Central	105	45	60	8	4	4	97	41	56
Isa Town	54	29	25	9	5	4	45	24	21
Riffa	50	22	28	20	11	9	30	11	19
Western	42	15	27	2	-	2	40	15	25
Southern	48	21	27	1	1	-	47	20	27
Hamad Town	2	-	2	1	-	1	1	-	1
Total	797	350	447	170	70	100	627	280	347

Table 9.24
2007 - 2003
Surgical Operations and Procedures at Main Operation Theatre by Specialty 2003 - 2007

<i>Speciality</i>	<i>2007</i>	<i>2006</i>	<i>2005</i>	<i>2004</i>	<i>2003</i>	
General Surgery	4,851	4,746	6,734	6,350	6,697	
Orthopaedic Surgery and Fracture	3,844	4,077	3,834	3,572	3,166	
Surgical Operations of Lung and Vascular	496	540	534	386	490	
Neurology Surgery	260	259	193	214	224	
Urology Surgery	1,762	1,644	1,646	1,581	1,641	
Pediatrics Surgery	1,388	1,391	1,277	1,482	1,403	
Plastic Surgery and Burns	1,261	929	891	862	758	
Dental & Maxillofacial Surgery	1,075	768	830	717	738	
Ophthalmology Surgery	987	908	918	1,067	1,074	
Ear, Nose & Throat Surgery	2,108	1,925	2,283	2,287	2,355	
Gynaecology Surgery	2,500	2,285	2,664	2,706	2,580	
Obstetrics (Caesarean) *	230	212	240	347	611	* ()
Oncology	4	7	24	14	15	
Kidney Transplant	8	3	6	NA	8	
Total	20,774	19,694	22,074	21,585	21,760	
Deaths	5	2	4	5	6	

* *Obstetrics (Caesarean): data only include emergency cases, other cases are done at Labour room (Ward 308).*

.(308) : () *

Table 9.25
2007 - 2003
Endoscopies Procedures 2003 - 2007

<i>Description</i>	<i>2007</i>		<i>2006</i>		<i>2005</i>		<i>2004</i>		<i>2003</i>		
	<i>Medical</i>	<i>Surgical</i>	<i>Medical</i>	<i>Surgical</i>	<i>Medical</i>	<i>Surgical</i>	<i>Medical</i>	<i>Surgical</i>	<i>Medical</i>	<i>Surgical</i>	
Gastroscopy	1,009	292	937	194	914	234	876	197	901	284	
Colonoscopy	290	122	265	114	228	123	236	91	264	82	
Gastroscopy - Colonoscopy	245	93	118	45	117	40	91	29	112	31	-
ERCP	144	-	145	1	153	-	136	-	114	-	
Bronchoscopy	113	-	122	-	150	-	171	-	109	-	
Others	138	-	120	-	22	-	47	-	104	-	
Total	1,939	507	1,707	354	1,584	397	1,557	317	1,604	397	