

**CHAPTER 9 - SECONDARY HEALTHCARE: GOVERNMENT SECTOR**

**SALMANIYA MEDICAL COMPLEX (SMC)**

Summary Statistics

Beds by Department and Specialty 2000-2004

Bed Utilization 2004

Bed Utilization by Department 2000-2004

Re-Admissions 2004

Admissions and Discharges by Department and Days of the Week 2004

Admissions and Discharges by Days of the Week 2004

Discharges (Alive and Dead) by Age Groups, Nationality and Sex 2004

Discharges (Alive and Dead) by Age Groups and Nationality 2004

Discharges (Alive and Dead) by Geographical Region 2004

Discharges (Alive and Dead) by Source of Admission 2004

Discharges (Alive and Dead) by Source of Admission 2004

Discharges (Alive and Dead) by Marital Status 2004

Page i

Table 9.1, page 9-3

Table 9.2, page 9-4

Table 9.3, page 9-6

Table 9.4, page 9-10

Table 9.5, page 9-11

Figure 9.1, page 9-12

Table 9.6, page 9-13

Figure 9.2, page 9-15

Table 9.7, page 9-16

Table 9.8, page 9-17

Figure 9.3, page 9-18

Table 9.9, page 9-19

: -

2004-2000

2004

2004-2000

2004

2004

2004

2004

( )

2004

( )

2004

( )

2004

( )

2004

( )

2004

( )



<i>Department</i>	<i>2004</i>	<i>2003</i>	<i>2002</i>	<i>2001</i>	<i>2000</i>	
<b>Medical</b>	<b>269</b>	<b>258</b>	<b>256</b>	<b>214</b>	<b>243</b>	
Internal Medicine*	216	205	205	165	194*	
Chest/Respiratory	17	17	17	17	17	
Cardiology	20	20	20	20	20	
Cardiac Care Unit (CCU)	16	16	14	12	12	
<b>Surgical</b>	<b>158</b>	<b>164</b>	<b>164</b>	<b>164</b>	<b>160</b>	
General Surgery	142	142	142	142	138	
Paediatrics Surgery*	16	22	22	22	22*	
<b>Orthopedic Surgery &amp; Fracture*</b>	<b>64</b>	<b>58</b>	<b>58</b>	<b>58</b>	<b>58</b>	*
<b>Plastic Surgery &amp; Burns</b>	<b>21</b>	<b>21</b>	<b>21</b>	<b>21</b>	<b>23</b>	
Plastic Surgery	4	4	4	4	6	
Burns	17	17	17	17	17	
<b>Paediatrics*</b>	<b>92</b>	<b>92</b>	<b>95</b>	<b>95</b>	<b>95</b>	*
General Paediatrics	69	69	72	72	72	
Infectious Diseases	23	23	23	23	23	
Special Care Baby Unit	45	45	45	45	45	
<b>Obstetrics &amp; Gynecology</b>	<b>146</b>	<b>156</b>	<b>156</b>	<b>156</b>	<b>166</b>	
Obstetrics*	80	80	80	80	80*	
Gynecology*	66	76	76	76	86*	
<b>E.N.T</b>	<b>35</b>	<b>35</b>	<b>35</b>	<b>38</b>	<b>38</b>	
<b>Ophthalmology</b>	<b>35</b>	<b>35</b>	<b>35</b>	<b>44</b>	<b>44</b>	
<b>Dental</b>	<b>4</b>	<b>4</b>	<b>4</b>	<b>-</b>	<b>2</b>	
<b>Intensive Care Unit (ICU)</b>	<b>11</b>	<b>11</b>	<b>11</b>	<b>11</b>	<b>11</b>	
<b>Decanter Ward (12)*</b>	<b>NA</b>	<b>NA</b>	<b>NA</b>	<b>18</b>	<b>NA</b>	* 12
<b>Infectious Diseases Ward (13)*</b>	<b>NA</b>	<b>NA</b>	<b>NA</b>	<b>17</b>	<b>NA</b>	* 13
<b>Other</b>	<b>40</b>	<b>40</b>	<b>40</b>	<b>52</b>	<b>30</b>	
Day Case Unit	18	18	18	18	18	
Private Ward	22	22	22	22	12	
Short Stay Beds (ward 62)*	NA	NA	NA	12	NA*	62
<b>Total*</b>	<b>875</b>	<b>874</b>	<b>875</b>	<b>888</b>	<b>870</b>	*

\* Refer to Conventions used in the report .

<i>SCBU</i>	<i>Total</i>	<sup>1</sup> <i>Private Ward</i>	<i>Intensive Care Unit</i>	<i>Dental</i>	<i>Ophthalmology</i>	<i>E.N.T.</i>	<i>Paediatrics</i>	<i>Obs. &amp; Gyne.</i>	<i>Plastic Surg. &amp; Burn</i>	<i>Orthop Surg. &amp; Fracture</i>	<i>Surgery</i>	<i>Medical</i>	<i>Description</i>
979	<b>43,664</b>	622	223	302	1,219	3,310	4,447	12,060	467	2,284	6,777	12,575	Total admissions
972	<b>43,648</b>	1,347	109	309	1,219	3,313	4,463	12,075	479	2,277	6,836	12,568	Total discharges
45	<b>857</b>	22	11	4	35	35	92	146	21	64	158	269	No. of beds
16,470	<b>313,662</b>	8,052	4,026	1,464	12,810	12,810	33,672	53,436	7,686	23,424	57,828	98,454	Bed days available
12,116	<b>259,272</b>	6,502	1,537	1,622	6,447	10,840	24,167	43,838	4,359	20,421	51,333	94,708	Patient-days overnight
21	<b>951</b>	15	8	6	11	92	123	299	10	33	152	217	> Patient days < 1 day
12,137	<b>260,223</b>	6,517	1,545	1,628	6,458	10,932	24,290	44,137	4,369	20,454	51,485	94,925	Total Patient days
73.7	<b>83.0</b>	80.9	38.4	111.2	50.4	85.3	72.1	82.6	56.8	87.3	89.0	96.4	Bed occupancy rate
21.6	<b>50.9</b>	61.2	9.9	77.3	34.8	94.7	48.5	82.7	22.8	35.6	43.3	46.7	Turnover rate

<sup>1</sup> Private ward 410, 413: data in this column already counted within the related departments except number of beds & bed days available .

( )

: 413 , 410

<sup>1</sup>

<i>SCBU</i>	<i>Total</i>	<sup>1</sup> <i>Private Ward</i>	<i>Intensive Care Unit</i>	<i>Dental</i>	<i>Ophthalmology</i>	<i>E.N.T.</i>	<i>Paediatrics</i>	<i>Obs. &amp; Gyne.</i>	<i>Plastic Surg. &amp; Burn</i>	<i>Orthop Surg. &amp; Fracture</i>	<i>Surgery</i>	<i>Medical</i>	<i>Description</i>
4.5	1.2	1.1	22.8	-0.5	5.2	0.6	2.1	0.8	6.9	1.3	0.9	0.3	<sup>2</sup> Turnover interval <sup>2</sup>
2.7	119.3	1.7	0.6	0.8	3.3	9.0	12.2	33.0	1.3	6.2	18.5	34.4	Average daily admission
2.7	119.3	3.7	0.3	0.8	3.3	9.1	12.2	33.0	1.3	6.2	18.7	34.3	Average daily discharge
12.5	6.0	4.8	14.2	5.3	5.3	3.3	5.4	3.7	9.1	9.0	7.5	7.6	Average length of stay

Note: Total excluding Day Case Unit .

<sup>2</sup> Turnover Interval: Negative sign indicates that the concerned department is utilising more beds than allocated .

2

<i>Department / Unit</i>	<i>2004</i>	<i>2003</i>	<i>2002</i>	<i>2001</i>	<i>2000</i>	<i>/</i>
<b>Medical</b>						
Total Admissions	12,575	11,383	10,097	9,102	8,709	
Total Discharges	12,568	11,409	10,124	9,070	8,667	
No.of beds	269	258	256	214	243	
Total Patient days	94,925	90,403	84,329	81,269	79,174	
Bed occupancy rate	96.4	96.0	90.2	103.8	89.0	
Average length of stay	7.6	7.9	8.3	9.0	9.1	
<b>Surgical *</b>						*
Total Admissions	6,777	6,615	7,109	7,291	6,860	
Total Discharges	6,836	6,691	7,163	7,348	6,961	
No.of beds	158	164	164	164	160	
Total Patient days	51,485	49,818	50,951	55,111	56,875	
Bed occupancy rate	89.0	83.2	85.1	91.8	97.4	
Average length of stay	7.5	7.4	7.1	7.5	8.2	
<b>Paediatrics</b>						
Total Admissions	4,447	4,452	4,564	4,211	4,462	
Total Discharges	4,463	4,441	4,589	4,224	4,486	
No.of beds	92	92	95	95	95	
Total Patient days	24,290	25,773	24,304	24,155	24,816	
Bed occupancy rate	72.1	76.8	70.1	69.5	71.6	
Average length of stay	5.4	5.8	5.3	5.7	5.5	

*Note: Table 9.5 indicates admissions and discharges by department where as this table provides information by department and it's units.*

*\* The 2001 figures only include Dental patients, refer to Conventions used in the report*

9.5

2001

<i>Department / Unit</i>	<i>2004</i>	<i>2003</i>	<i>2002</i>	<i>2001</i>	<i>2000</i>	<i>/</i>
<b>Obstetrics/Gynecology</b>						
Total Admissions	12,060	11,442	11,367	10,882	11,157	
Total Discharges	12,075	11,433	11,372	10,863	11,134	
No.of beds	146	156	156	156	166	
Total Patient days	44,137	41,810	44,423	44,497	46,949	
Bed occupancy rate	82.6	73.4	78.0	77.9	77.3	
Average length of stay	3.7	3.7	3.9	4.1	4.2	
<b>E.N.T</b>						
Total Admissions	3,310	3,206	3,413	3,370	3,235	
Total Discharges	3,313	3,190	3,406	3,357	3,218	
No.of beds	35	35	35	38	38	
Total Patient days	10,932	11,034	11,052	11,243	10,763	
Bed occupancy rate	85.3	86.4	86.5	80.8	77.4	
Average length of stay	3.3	3.5	3.2	3.3	3.3	
<b>Ophthalmology</b>						
Total Admissions	1,219	1,296	1,320	1,385	1,354	
Total Discharges	1,219	1,298	1,313	1,371	1,338	
No.of beds	35	35	35	44	44	
Total Patient days	6,458	8,028	8,764	9,094	9,334	
Bed occupancy rate	50.4	62.8	68.6	56.5	58.0	
Average length of stay	5.3	6.2	6.7	6.6	7.0	

<i>Department / Unit</i>	<i>2004</i>	<i>2003</i>	<i>2002</i>	<i>2001</i>	<i>2000</i>	<i>/</i>
<b>Orthopedic Surgery &amp; Fracture</b>						
Admissions	2,284	2,082	1,997	2,021	1,903	
Discharges	2,277	2,083	2,016	2,010	1,901	
No.of beds	64	58	58	58	58	
Total Patient days	20,454	20,040	17,824	20,385	18,960	
Bed occupancy rate	87.3	94.7	84.0	96.0	89.6	
Average length of stay	9.0	9.6	8.8	10.1	10.0	
<b>Plastic Surgery &amp; Burns</b>						
Total Admissions	467	379	383	347	280	
Total Discharges	479	388	390	369	288	
No.of beds	21	21	21	21	23	
Total Patient days	4,369	4,447	3,749	4,768	4,025	
Bed occupancy rate	56.8	58.0	48.9	62.0	47.8	
Average length of stay	9.1	11.5	9.6	12.9	14.0	
<b>Intensive Care Unit</b>						
Total Admissions	223	204	184	173	159	
Total Discharges	109	122	114	82	66	
No.of beds	11	11	11	11	11	
Total Patient days	1,545	1,755	1,565	1,150	754	
Bed occupancy rate	38.4	43.7	39.0	28.6	18.7	
Average length of stay	14.2	14.4	13.7	14.0	11.4	



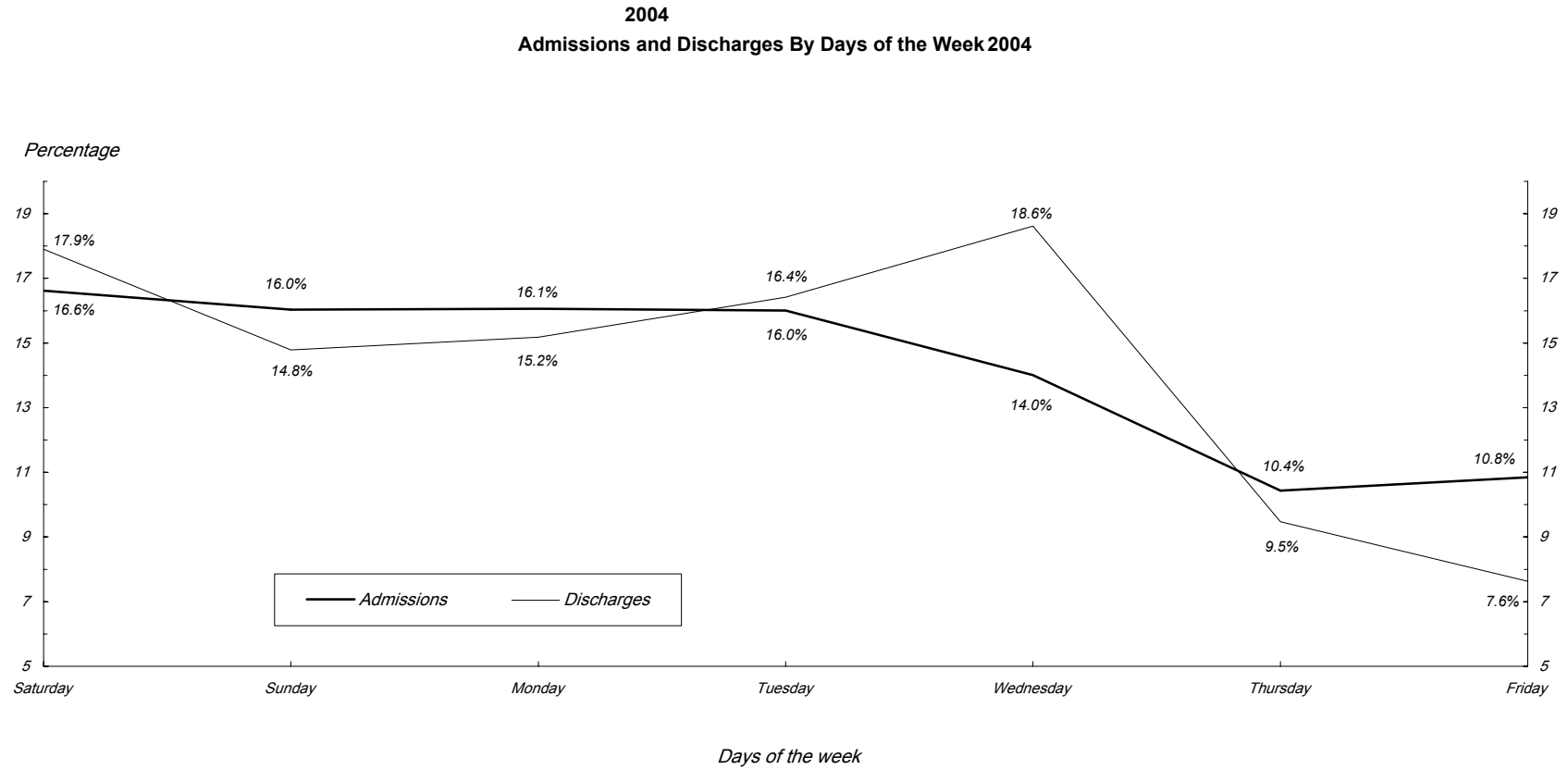
<i>Department / Unit</i>	<i>2004</i>	<i>2003</i>	<i>2002</i>	<i>2001</i>	<i>2000</i>	<i>/</i>
<b>Dental *</b>						*
Total Admissions	302	325	259	245	268	
Total Discharges	309	324	253	253	267	
No.of beds	4	4	4	NA	2	
Total Patient days	1,628	1,611	1,403	NA	1,268	
Bed occupancy rate	111.2	110.3	96.1	NA	173.2	
Average length of stay	5.3	5.0	5.5	NA	4.7	
<b>Private ward</b>						
Total Admissions	622	604	687	747	333	
Total Discharges	1,347	1,228	1,330	1,323	387	
No.of beds	22	22	22	22	12	
Total Patient days	6,517	6,356	6,060	6,116	2,324	
Bed occupancy rate	80.9	79.2	75.5	76.0	52.9	
Average length of stay	4.8	5.2	4.6	4.6	6.0	
<b>Total Admissions</b>	<b>43,664</b>	<b>41,384</b>	<b>40,693</b>	<b>38,782</b>	<b>38,387</b>	
<b>Total Discharges</b>	<b>43,648</b>	<b>41,379</b>	<b>40,740</b>	<b>38,694</b>	<b>38,326</b>	
<b>No.of beds</b>	<b>857</b>	<b>856</b>	<b>857</b>	<b>823</b>	<b>852</b>	
<b>Total Patient days</b>	<b>260,223</b>	<b>254,719</b>	<b>248,364</b>	<b>251,672</b>	<b>252,918</b>	
<b>Bed occupancy rate</b>	<b>83.0</b>	<b>81.5</b>	<b>79.4</b>	<b>83.6</b>	<b>81.1</b>	
<b>Average length of stay</b>	<b>6.0</b>	<b>6.2</b>	<b>6.1</b>	<b>6.5</b>	<b>6.6</b>	
<b>Special Care Baby Unit</b>						
Total Admissions	979	1,001	905	864	828	
Total Discharges	972	982	896	839	787	
No.of beds	45	45	45	45	45	
Total Patient days	12,137	11,096	11,258	11,720	19,817	
Bed occupancy rate	73.7	67.6	68.5	71.2	65.7	
Average length of stay	12.5	11.3	12.6	14.0	13.7	

\* Refer to Conventions used in the report .

\*

<i>Admission Classification</i>	<i>Total</i>		
No previous admission	33,655		
Same condition <= 3 months	3,330		3
Same condition > 3 months	900	3	
Other condition <= 3 months	5,027		3
Other condition > 3 months	1,708	3	

Department	Total		Fri		Thurs		Wed		Tues		Mon		Sun		Sat		
	Disch.	Adm.	Disch.	Adm.	Disch.	Adm.	Disch.	Adm.	Disch.	Adm.	Disch.	Adm.	Disch.	Adm.	Disch.	Adm.	
Medical	12,568	12,575	671	1,411	933	1,623	2,565	1,845	1,903	1,857	1,915	1,833	2,088	1,945	2,493	2,061	
Surgical	6,836	6,777	618	675	626	521	1,223	935	1,096	1,178	1,097	1,132	987	1,082	1,189	1,254	
Ophthalmology	1,219	1,219	34	86	73	68	291	146	254	244	226	214	133	193	208	268	
E.N.T.	3,313	3,310	282	182	301	168	646	536	643	644	538	669	376	602	527	509	
Dental	309	302	13	16	24	24	61	37	51	43	61	50	37	52	62	80	
Pediatrics	4,463	4,447	348	591	435	548	793	588	781	629	752	753	607	753	747	585	
Orthopedic Surgery & Fracture	2,277	2,284	75	144	191	178	503	343	367	371	356	381	351	413	434	454	
Plastic Surgery & Burns	479	467	24	45	28	37	118	112	47	38	87	72	70	49	105	114	
Obstetrics & Gynecology	12,075	12,060	1,223	1,504	1,472	1,303	1,926	1,533	1,997	1,972	1,595	1,913	1,810	1,921	2,052	1,914	
Intensive Care Unit (ICU)	109	223	13	40	15	41	18	25	19	33	18	29	12	21	14	34	
<b>Total</b>	<b>43,648</b>	<b>43,664</b>	<b>3,301</b>	<b>4,694</b>	<b>4,098</b>	<b>4,511</b>	<b>8,144</b>	<b>6,100</b>	<b>7,158</b>	<b>7,009</b>	<b>6,645</b>	<b>7,046</b>	<b>6,471</b>	<b>7,031</b>	<b>7,831</b>	<b>7,273</b>	
Special Care Baby Unit (SCBU)	972	979	102	148	127	148	164	152	166	135	127	123	128	125	158	148	
<b>Grand Total</b>	<b>44,620</b>	<b>44,643</b>	<b>3,403</b>	<b>4,842</b>	<b>4,225</b>	<b>4,659</b>	<b>8,308</b>	<b>6,252</b>	<b>7,324</b>	<b>7,144</b>	<b>6,772</b>	<b>7,169</b>	<b>6,599</b>	<b>7,156</b>	<b>7,989</b>	<b>7,421</b>	



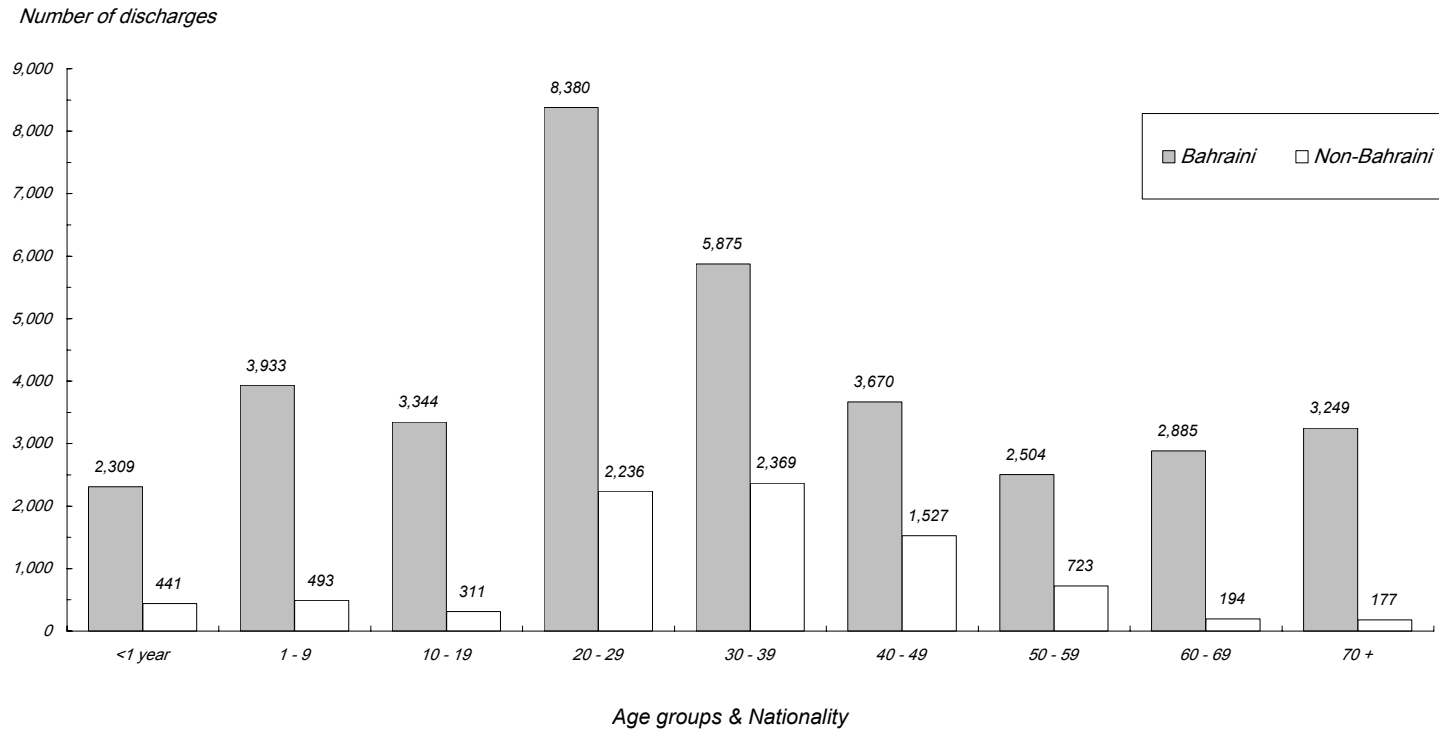
Reference: Table 9.5

9.5 :

<i>Total</i>			<i>Non-Bahraini</i>			<i>Bahraini</i>				
<i>Total</i>	<i>Female</i>	<i>Male</i>	<i>Total</i>	<i>Female</i>	<i>Male</i>	<i>Total</i>	<i>Female</i>	<i>Male</i>		( ) <i>Age Group (Years)</i>
2,650	1,117	1,533	422	176	246	2,228	941	1,287	Alive	<1 year
100	53	47	19	12	7	81	41	40	Dead	
<b>2,750</b>	<b>1,170</b>	<b>1,580</b>	<b>441</b>	<b>188</b>	<b>253</b>	<b>2,309</b>	<b>982</b>	<b>1,327</b>	<b>Total</b>	
4,411	1,725	2,686	491	173	318	3,920	1,552	2,368	Alive	1 - 9
15	5	10	2	1	1	13	4	9	Dead	
<b>4,426</b>	<b>1,730</b>	<b>2,696</b>	<b>493</b>	<b>174</b>	<b>319</b>	<b>3,933</b>	<b>1,556</b>	<b>2,377</b>	<b>Total</b>	
3,637	1,689	1,948	309	184	125	3,328	1,505	1,823	Alive	10 - 19
18	11	7	2	1	1	16	10	6	Dead	
<b>3,655</b>	<b>1,700</b>	<b>1,955</b>	<b>311</b>	<b>185</b>	<b>126</b>	<b>3,344</b>	<b>1,515</b>	<b>1,829</b>	<b>Total</b>	
10,589	7,500	3,089	2,229	1,423	806	8,360	6,077	2,283	Alive	20 - 29
27	13	14	7	3	4	20	10	10	Dead	
<b>10,616</b>	<b>7,513</b>	<b>3,103</b>	<b>2,236</b>	<b>1,426</b>	<b>810</b>	<b>8,380</b>	<b>6,087</b>	<b>2,293</b>	<b>Total</b>	
8,198	5,622	2,576	2,351	1,275	1,076	5,847	4,347	1,500	Alive	30 - 39
46	19	27	18	3	15	28	16	12	Dead	
<b>8,244</b>	<b>5,641</b>	<b>2,603</b>	<b>2,369</b>	<b>1,278</b>	<b>1,091</b>	<b>5,875</b>	<b>4,363</b>	<b>1,512</b>	<b>Total</b>	
5,113	2,762	2,351	1,511	493	1,018	3,602	2,269	1,333	Alive	40 - 49
84	31	53	16	1	15	68	30	38	Dead	
<b>5,197</b>	<b>2,793</b>	<b>2,404</b>	<b>1,527</b>	<b>494</b>	<b>1,033</b>	<b>3,670</b>	<b>2,299</b>	<b>1,371</b>	<b>Total</b>	
3,128	1,364	1,764	702	162	540	2,426	1,202	1,224	Alive	50 - 59
99	40	59	21	6	15	78	34	44	Dead	
<b>3,227</b>	<b>1,404</b>	<b>1,823</b>	<b>723</b>	<b>168</b>	<b>555</b>	<b>2,504</b>	<b>1,236</b>	<b>1,268</b>	<b>Total</b>	

<i>Total</i>			<i>Non-Bahraini</i>			<i>Bahraini</i>				<i>( ) Age Group (Years)</i>
<i>Total</i>	<i>Female</i>	<i>Male</i>	<i>Total</i>	<i>Female</i>	<i>Male</i>	<i>Total</i>	<i>Female</i>	<i>Male</i>		
2,880	1,526	1,354	181	60	121	2,699	1,466	1,233	Alive	60 - 69
199	103	96	13	3	10	186	100	86	Dead	
3,079	1,629	1,450	194	63	131	2,885	1,566	1,319	Total	
3,005	1,380	1,625	158	84	74	2,847	1,296	1,551	Alive	70 +
421	204	217	19	10	9	402	194	208	Dead	
3,426	1,584	1,842	177	94	83	3,249	1,490	1,759	Total	
43,611	24,685	18,926	8,354	4,030	4,324	35,257	20,655	14,602	Alive	Total
1,009	479	530	117	40	77	892	439	453	Dead	
44,620	25,164	19,456	8,471	4,070	4,401	36,149	21,094	15,055	Total	

2004 ( )  
Discharges (Alive and Dead) By Age Groups and Nationality 2004



Reference: Table 9.6

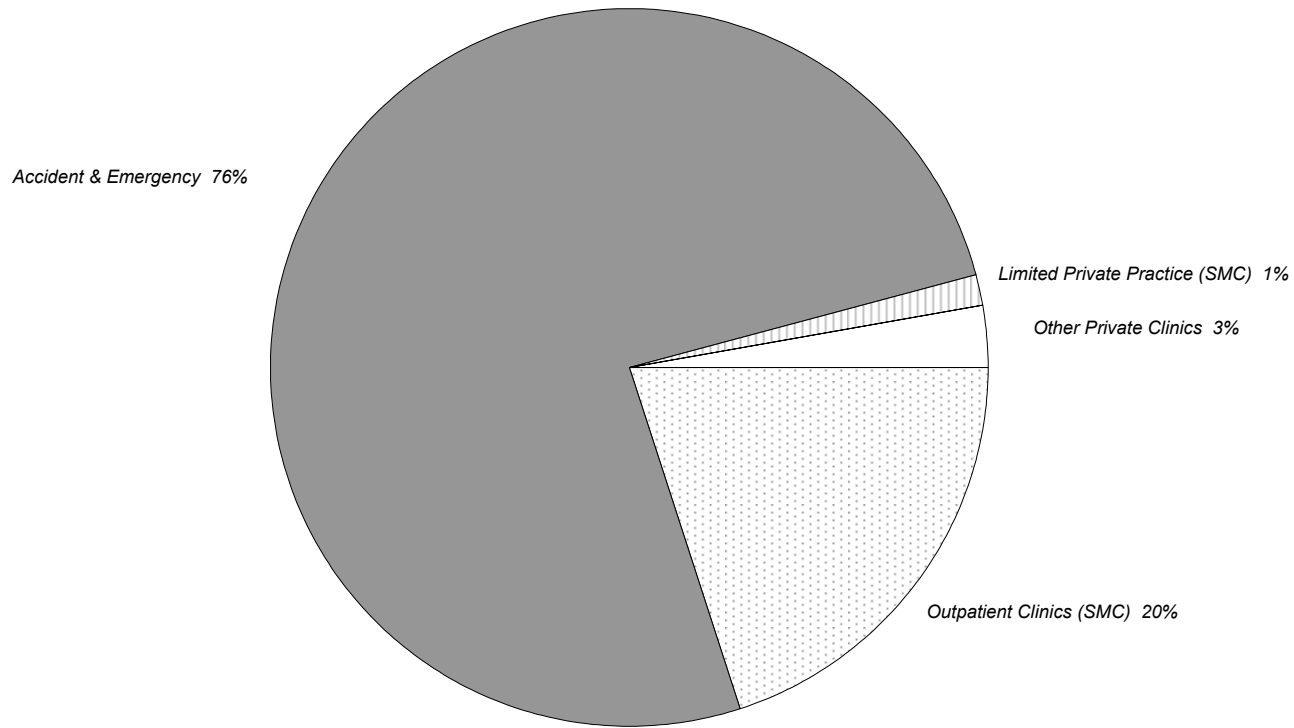
9.6 :

Region	Total		Dead		Alive	
	%	No.	%	No.	%	No.
Hidd	1.8	785	2.5	25	1.7	760
Muharraq	14.5	6,470	22.1	223	14.3	6,247
Manama	20.9	9,330	23.2	234	20.9	9,096
Jidhafs	11.2	5,005	10.9	110	11.2	4,895
Northern	7.5	3,366	6.2	63	7.6	3,303
Sitra	8.8	3,908	7.8	79	8.8	3,829
Central	9.1	4,040	6.5	66	9.1	3,974
Isa Town	6.7	2,995	6.5	66	6.7	2,929
Riffa	6.0	2,699	5.4	54	6.1	2,645
Western	5.1	2,281	3.7	37	5.1	2,244
Southern	0.2	94	-	-	0.2	94
Hamad Town	7.5	3,337	4.1	41.0	7.6	3,296
Undetermined	0.7	310	1.1	11.0	0.7	299
<b>Total</b>	<b>100.0</b>	<b>44,620</b>	<b>100.0</b>	<b>1,009</b>	<b>100.0</b>	<b>43,611</b>



<i>Source of Admission</i>	<i>Total</i>		<i>Dead</i>		<i>Alive</i>		
	<i>%</i>	<i>No.</i>	<i>%</i>	<i>No.</i>	<i>%</i>	<i>No.</i>	
Outpatient Clinics (SMC)	20	8,961	4.6	46	20.4	8,915	( )
Accident & Emergency	76	33,807	94.5	954	75.3	32,853	
Limited Private Practice (SMC)	1	597	0.3	3	1.4	594	( )
Other Private Clinics	3	1,255	0.6	6	2.9	1,249	( )
<b>Total</b>	<b>100.0</b>	<b>44,620</b>	<b>100.0</b>	<b>1,009</b>	<b>100.0</b>	<b>43,611</b>	

2004 ( )  
Discharges (Alive and Dead) By Source of Admission 2004



Reference: Table 9.8

9.8 :

<i>Marital Status</i>	<i>Total</i>		<i>Dead</i>		<i>Alive</i>	
	<i>%</i>	<i>No.</i>	<i>%</i>	<i>No.</i>	<i>%</i>	<i>No.</i>
Single	40	17,773	29.9	302	40.1	17,471
Married	55	24,331	49.4	498	54.6	23,833
Widowed	4	1,694	17.3	175	3.5	1,519
Divorced	1	352	1.9	19	0.8	333
Unknown	1	470	1.5	15	1.0	455
<b>Total</b>	<b>100.0</b>	<b>44,620</b>	<b>100.0</b>	<b>1,009</b>	<b>100.0</b>	<b>43,611</b>

<i>Nationality</i>	<i>Total</i>		<i>Dead</i>		<i>Alive</i>		
	<i>%</i>	<i>No.</i>	<i>%</i>	<i>No.</i>	<i>%</i>	<i>No.</i>	
Bahraini	81.0	36,149	88.4	892	80.8	35,257	
Indian	7.4	3,319	3.3	33	7.5	3,286	
Pakistani	2.6	1,175	1.7	17	2.7	1,158	
Other Arab	2.6	1,150	1.2	12	2.6	1,138	
Bangladeshi	1.8	807	0.6	6	1.8	801	
Philipino	1.0	424	0.6	6	1.0	418	
Saudi Arabian	0.9	391	0.9	9	0.9	382	
Iranian	0.4	200	1.1	11	0.4	189	
Srilankan	0.5	231	0.2	2	0.5	229	
Other Countries of Gulf Co-operation Council (G.C.C.)	0.5	241	0.9	9	0.5	232	
European	0.3	124	0.1	1	0.3	123	
Other Asians	0.5	233	0.8	8	0.5	225	
African (non Arab)	0.2	96	0.3	3	0.2	93	( )
American	0.1	36	-	-	0.1	36	
Other Nationalities	0.1	44	-	-	0.1	44	
<b>Total</b>	<b>100.0</b>	<b>44,620</b>	<b>100.0</b>	<b>1,009</b>	<b>100.0</b>	<b>43,611</b>	

Grand Total	Total				Non-Bahraini				Bahraini				Principal Diagnosis	ICD-10 Code
	Female		Male		Female		Male		Female		Male			
	Dead	Alive	Dead	Alive	Dead	Alive	Dead	Alive	Dead	Alive	Dead	Alive		
1,847	117	678	133	919	8	109	9	266	109	569	124	653	Certain infectious & parasitic diseases	A00-B99
1,556	66	801	82	607	6	79	9	102	60	722	73	505	Neoplasms	C00-D49
3,175	8	1,195	9	1,963	-	47	-	59	8	1,148	9	1,904	Diseases of the blood and blood-forming organs and certain disorders involving the immune mechanism	D50-D89
1,181	8	586	10	577	-	51	-	105	8	535	10	472	( ) Endocrine, nutritional and metabolic diseases	E00-E90
130	-	30	-	100	-	8	-	33	-	22	-	67	Mental and behavioural disorders	F00-F99
651	8	295	11	337	-	40	3	69	8	255	8	268	Diseases of the nervous system	G00-G99
1,121	-	501	-	620	-	40	-	105	-	461	-	515	Diseases of the eye and adnexa	H00-H59
475	-	235	-	240	-	23	-	31	-	212	-	209	Diseases of the ear and mastoid process	H60-H95
3,718	121	1,353	117	2,127	6	145	26	685	115	1,208	91	1,442	Diseases of the circulatory system	I00-I99
4,261	48	1,725	53	2,435	5	180	7	401	43	1,545	46	2,034	Diseases of the respiratory system	J00-J99
3,502	21	1,399	30	2,052	1	225	9	563	20	1,174	21	1,489	Diseases of the digestive system	K00-K99
551	1	200	-	350	-	39	-	98	1	161	-	252	Diseases of the skin and subcutaneous tissue	L00-L99

Grand Total	Total				Non-Bahraini				Bahraini				Principal Diagnosis	ICD-10 Code
	Female		Male		Female		Male		Female		Male			
	Dead	Alive	Dead	Alive	Dead	Alive	Dead	Alive	Dead	Alive	Dead	Alive		
1,271	-	525	1	745	-	39	-	120	-	486	1	625	Diseases of the musculoskeletal system and connective tissue	M00-M99
2,386	8	1,421	10	947	-	248	-	241	8	1,173	10	706	Diseases of the genitourinary system	N00-N99
10,426	1	10,425	-	-	-	2,162	-	-	1	8,263	-	-	Pregnancy, childbirth and the puerperium	O00-O99
1,360	39	562	35	724	12	102	3	104	27	460	32	620	Certain conditions originating in the perinatal period	P00-P99
512	7	180	5	320	-	30	1	44	7	150	4	276	( ) Congenital malformations, deformations and chromosomal abnormalities	Q00-Q99
2,107	20	943	13	1,131	1	155	3	304	19	788	10	827	Symptoms, signs and abnormal clinical and laboratory findings not elsewhere classified	R00-R99
3,395	6	1,049	21	2,319	1	220	7	910	5	829	14	1,409	Injury, poisoning and certain other consequences of external causes	S00-T98
7	-	1	-	6	-	1	-	1	-	-	-	5	External causes of morbidity and mortality	V00-Y98
987	-	581	-	406	-	87	-	83	-	494	-	323	Factors influencing health status and contact with health services	Z00-Z99
1	-	-	-	1	-	-	-	-	-	-	-	1	Other Diagnoses	other
44,620	479	24,685	530	18,926	40	4,030	77	4,324	439	20,655	453	14,602	Total	

Total	70+	60-69	50-59	40-49	30-39	20-29	10-19	1-9	< 1 yr		Principal Diagnosis	ICD-10 Code
1,597	123	81	84	103	167	182	121	531	205	Alive		A00-B99
250	142	42	22	14	9	9	3	4	5	Dead	Certain infectious & parasitic diseases	
1,408	173	251	261	292	145	105	43	119	19	Alive		C00-D49
148	45	47	21	16	10	5	3	1	-	Dead	Neoplasms	
3,158	26	26	31	220	452	1,112	850	413	28	Alive		D50-D89
17	5	2	1	3	-	1	1	3	1	Dead	immune mechanism	
1,163	173	196	190	170	126	94	116	74	24	Alive	( )	E00-E90
18	13	4	-	1	-	-	-	-	-	Dead	Endocrine, nutritional and metabolic diseases	
130	15	8	22	42	17	10	13	2	1	Alive		F00-F99
-	-	-	-	-	-	-	-	-	-	Dead	Mental and behavioural disorders	
632	53	69	60	105	74	90	70	81	30	Alive		G00-G99
19	3	2	2	5	1	1	2	2	1	Dead	Diseases of the nervous system	
1,121	313	330	187	91	57	60	35	42	6	Alive		H00-H59
-	-	-	-	-	-	-	-	-	-	Dead	Diseases of the eye and adnexa	
475	10	13	25	57	59	58	60	170	23	Alive		H60-H95
-	-	-	-	-	-	-	-	-	-	Dead	Diseases of the ear and mastoid process	
3,480	823	688	731	663	304	181	51	29	10	Alive		I00-I99
238	108	62	27	19	12	5	2	-	3	Dead	Diseases of the circulatory system	
4,160	357	256	212	322	419	576	469	1,270	279	Alive		J00-J99
101	55	23	9	5	1	-	4	2	2	Dead	Diseases of the respiratory system	
3,451	264	253	319	602	629	648	355	242	139	Alive		K00-K99
51	20	6	6	8	6	2	-	1	2	Dead	Diseases of the digestive system	
550	29	26	50	64	90	110	78	77	26	Alive		L00-L99
1	1	-	-	-	-	-	-	-	-	Dead	Diseases of the skin and subcutaneous tissue	
1,270	102	137	180	272	228	180	102	64	5	Alive		M00-M99
1	-	-	-	1	-	-	-	-	-	Dead	Diseases of the musculoskeletal system and connective tissue	

Total	70+	60-69	50-59	40-49	30-39	20-29	10-19	1-9	< 1 yr		Principal Diagnosis	ICD-10 Code
2,368	166	181	314	593	438	375	140	97	64	Alive		N00-N99
18	12	1	2	3	-	-	-	-	-	Dead	Diseases of the genitourinary system	
10,425	1	2	6	707	3,868	5,514	327	-	-	Alive		O00-O99
1	-	-	-	-	1	-	-	-	-	Dead	Pregnancy, childbirth and the puerperium	
1,286	-	-	-	-	4	3	1	5	1,273	Alive		P00-P99
74	-	-	-	-	-	-	-	-	74	Dead	Certain conditions originating in the perinatal period	
500	2	1	3	9	24	31	53	196	181	Alive	( )	Q00-Q99
12	-	-	-	-	-	-	-	-	12	Dead	Congenital malformations, deformations and chromosomal abnormalities	
2,074	190	174	243	321	271	297	197	238	143	Alive		R00-R99
33	13	6	2	6	2	2	2	-	-	Dead	Symptoms, signs and abnormal clinical and laboratory findings not elsewhere classified	
3,368	151	145	164	369	651	762	470	577	79	Alive		S00-T98
27	4	4	7	3	4	2	1	2	-	Dead	Injury, poisoning and certain other consequences of external causes	
7	1	1	1	1	-	2	-	1	-	Alive		V00-Y98
-	-	-	-	-	-	-	-	-	-	Dead	External causes of morbidity and mortality	
987	33	42	45	110	175	198	86	183	115	Alive		Z00-Z99
-	-	-	-	-	-	-	-	-	-	Dead	Factors influencing health status and contact with health services	
1	-	-	-	-	-	1	-	-	-	Alive	Other Diagnoses	other
-	-	-	-	-	-	-	-	-	-	Dead		
43,611	3,005	2,880	3,128	5,113	8,198	10,589	3,637	4,411	2,650	Alive		
1,009	421	199	99	84	46	27	18	15	100	Dead		
44,620	3,426	3,079	3,227	5,197	8,244	10,616	3,655	4,426	2,750	Total		
											Total	



<i>Grand Total</i>	<i>SCBU</i>	<i>Total</i>	<i>Dental</i>	<i>ICU</i>	<i>Radio-logy</i>	<i>Ophthal-mology</i>	<i>E.N.T.</i>	<i>Paed-iatrics</i>	<i>Obs. &amp; Gyne.</i>	<i>Plastic Surg. Burns</i>	<i>Orthop &amp; Fracture</i>	<i>Surgical</i>	<i>Medical</i>	<i>Nationality</i>	<i>Discharge Status</i>
34,705	723	33,982	235	4	-	1,025	2,967	3,854	9,331	331	1,672	5,152	9,411	Bah	
8,239	159	8,080	71	1	-	193	337	535	2,458	136	586	1,549	2,214	Non-Bah	Routine discharge home
42,944	882	42,062	306	5	-	1,218	3,304	4,389	11,789	467	2,258	6,701	11,625	Total	
416	-	416	2	1	-	1	5	31	224	5	6	49	92	Bah	
92	-	92	1	-	-	-	3	6	43	-	2	12	25	Non-Bah	Left against medical advise
508	-	508	3	1	-	1	8	37	267	5	8	61	117	Total	
155	20	135	-	10	-	-	-	9	-	-	1	3	112	Bah	48
25	4	21	-	5	-	-	-	-	-	1	-	2	13	Non-Bah	Died before 48 hours
180	24	156	-	15	-	-	-	9	-	1	1	5	125	Total	
737	50	687	-	75	-	-	1	22	2	1	8	51	527	Bah	48
92	12	80	-	12	-	-	-	5	-	3	1	12	47	Non-Bah	Died after 48 hours
829	62	767	-	87	-	-	1	27	2	4	9	63	574	Total	
128	3	125	-	1	-	-	-	1	15	1	-	3	104	Bah	
22	1	21	-	-	-	-	-	-	-	1	1	1	18	Non-Bah	Transferred to other hospitals
150	4	146	-	1	-	-	-	1	15	2	1	4	122	Total	
8	-	8	-	-	-	-	-	-	1	-	-	2	5	Bah	
1	-	1	-	-	-	-	-	-	1	-	-	-	-	Non-Bah	Undetermined
9	-	9	-	-	-	-	-	-	2	-	-	2	5	Total	
36,149	796	35,353	237	91	-	1,026	2,973	3,917	9,573	338	1,687	5,260	10,251	Bah	
8,471	176	8,295	72	18	-	193	340	546	2,502	141	590	1,576	2,317	Non-Bah	Total
44,620	972	43,648	309	109	-	1,219	3,313	4,463	12,075	479	2,277	6,836	12,568	Total	

<i>Male</i>						<i>Female</i>						<i>Grand Total</i>	<i>DISCH DOC ALS</i>	<i>Principal Diagnosis</i>	<i>ICD10 Code</i>
<i>Age Groups</i>						<i>Age Groups</i>									
<i>Total</i>	<i>65+</i>	<i>45-64</i>	<i>15-44</i>	<i>1-14</i>	<i>1&gt;</i>	<i>Total</i>	<i>65+</i>	<i>45-64</i>	<i>15-44</i>	<i>1-14</i>	<i>1&gt;</i>				
1,764	6	21	1,357	377	3	1,032	1	48	759	221	3	2,796	DISCH		D57
8,770	29	112	7,055	1,565	9	5,187	7	292	4,046	831	11	13,957	DOC	Sickle-cell disorders	
5	5	5	5	4	3	5	7	6.1	5.3	3.8	4	5	ALS		
NA	NA	NA	NA	NA	NA	2,686	-	13	2,672	1	-	2,686	DISCH		O80
NA	NA	NA	NA	NA	NA	7,469	-	42	7,426	1	-	7,469	DOC	Single spontaneous delivery	
NA	NA	NA	NA	NA	NA	3	-	3.2	2.8	1.0	-	3	ALS		
NA	NA	NA	NA	NA	NA	1,538	-	27	1,511	-	-	1,538	DISCH	-	O03
NA	NA	NA	NA	NA	NA	2,727	-	45	2,682	-	-	2,727	DOC	Spontaneous abortion	
NA	NA	NA	NA	NA	NA	2	-	1.7	1.8	-	-	2	ALS		
705	-	4	125	576	-	530	-	4	114	411	1	1,235	DISCH		J35
2,223	-	20	514	1,689	-	1,690	-	15	427	1,246	2	3,913	DOC	Chronic diseases of tonsils and adenoids	
3	-	5	4	3	-	3	-	3.8	3.7	3.0	2	3	ALS		
NA	NA	NA	NA	NA	NA	1,185	-	4	1,181	-	-	1,185	DISCH		O70
NA	NA	NA	NA	NA	NA	2,960	-	9	2,951	-	-	2,960	DOC	Perineal laceration during delivery	
NA	NA	NA	NA	NA	NA	2	-	2	2.5	-	-	2	ALS		
500	24	45	68	277	86	420	40	33	73	213	61	920	DISCH		A09
1,597	124	212	223	771	267	1,486	335	127	243	586	195	3,083	DOC	Diarrhoea and gastroenteritis of presumed infectious origin	
3	5.2	4.7	3.3	2.8	3.1	4	8.4	3.8	3.3	2.8	3.2	3	ALS		
418	-	-	-	-	418	331	-	-	-	-	331	749	DISCH		P59
3,124	-	-	-	-	3,124	2,409	-	-	-	-	2,409	5,533	DOC	Neonatal jaundice from other and unspecified causes	
7	-	-	-	-	7	7	-	-	-	-	7	7	ALS		

Principle Diagnosis: the leading 100 diagnosis are listed and the total number of discharges made up by the last entry in the table - "others".

100

DISCH : Discharges

DOC : Days of Care (by number of discharges)

ALS : Average Length of Stay

Male						Female						Grand Total	DISCH DOC ALS	Principal Diagnosis	ICD10 Code
Age Groups						Age Groups									
Total	65+	45-64	15-44	1-14	1>	Total	65+	45-64	15-44	1-14	1>				
NA	NA	NA	NA	NA	NA	735	2	5	728	-	-	735	DISCH		O34
NA	NA	NA	NA	NA	NA	4,480	29	19	4,432	-	-	4,480	DOC	Maternal care for known or suspected abnormality of pelvic organs	
NA	NA	NA	NA	NA	NA	6	15	4	6	-	-	6	ALS		
387	217	138	23	8	1	329	182	130	15	2	-	716	DISCH		H26
2,025	1,216	679	94	34	2	1,715	953	674	68	20	-	3,740	DOC	Other cataract	
5	6	5	4	4	2	5	5	5	5	10	-	5	ALS		
443	13	35	243	135	17	162	5	17	52	73	15	605	DISCH		S09
2,087	95	461	1,182	321	28	516	16	60	274	143	23	2,603	DOC	Other and unspecified injuries of head	
5	7	13	5	2	2	3	3	4	5	2	2	4	ALS		
372	94	195	83	-	-	229	92	120	17	-	-	601	DISCH		I20
1,590	472	826	292	-	-	1,007	464	490	53	-	-	2,597	DOC	Angina pectoris	
4	5	4	4	-	-	4	5	4	3	-	-	4	ALS		
NA	NA	NA	NA	NA	NA	564	-	4	559	1	-	564	DISCH		O99
NA	NA	NA	NA	NA	NA	2,642	-	27	2,612	3	-	2,642	DOC	Other maternal diseases classifiable elsewhere but complicating pregnancy, childbirth and the puerperium	
NA	NA	NA	NA	NA	NA	5	-	7	5	3	-	5	ALS		
372	2	18	280	71	1	180	1	16	117	46	-	552	DISCH		K35
1,829	11	145	1,313	348	12	1,045	8	210	582	245	-	2,874	DOC	Acute appendicitis	
5	6	8	5	5	12	6	8	13	5	5	-	5	ALS		
NA	NA	NA	NA	NA	NA	515	-	1	514	-	-	515	DISCH		O36
NA	NA	NA	NA	NA	NA	2,331	-	7	2,324	-	-	2,331	DOC	Maternal care for other known or suspected fetal problems	
NA	NA	NA	NA	NA	NA	5	-	7	5	-	-	5	ALS		
309	33	137	136	3	-	197	55	94	46	2	-	506	DISCH		R07
881	127	409	336	9	-	670	203	340	122	5	-	1,551	DOC	Pain in throat and chest	
3	4	3	2	3	-	3	4	4	3	3	-	3	ALS		

Male						Female						Grand Total	DISCH DOC ALS	Principal Diagnosis	ICD10 Code
Age Groups						Age Groups									
Total	65+	45-64	15-44	1-14	1>	Total	65+	45-64	15-44	1-14	1>				
269	43	52	71	71	32	197	49	29	40	48	31	466	DISCH		J18
1,688	262	423	451	388	164	1,304	397	173	259	306	169	2,992	DOC	Pneumonia, organism unspecified	
6	6	8	6	5	5	7	8	6	6	6	5	6	ALS		
281	-	3	155	114	9	182	3	10	107	59	3	463	DISCH		J03
877	-	13	479	358	27	517	11	31	298	169	8	1,394	DOC	Acute tonsillitis	
3	-	4	3	3	3	3	4	3	3	3	3	3	ALS		
412	54	96	162	39	61	25	-	4	2	8	11	437	DISCH		K40
1,924	407	522	759	91	145	173	-	23	6	9	135	2,097	DOC	Inguinal hernia	
5	8	5	5	2	2	7	-	6	3	1	12	5	ALS		
151	13	22	71	44	1	249	16	21	183	25	4	400	DISCH		R10
556	99	113	269	74	1	958	101	122	661	62	12	1,514	DOC	Abdominal and pelvic pain	
4	8	5	4	2	1	4	6	6	4	2	3	4	ALS		
207	24	40	34	83	26	192	42	67	29	47	7	399	DISCH		J46
1,002	144	244	138	379	97	1,112	300	421	130	244	17	2,114	DOC	Status asthmaticus	
5	6	6	4	5	4	6	7	6	4	5	2	5	ALS		
108	13	18	72	5	-	270	26	61	178	5	-	378	DISCH		K80
855	97	172	547	39	-	1,683	292	380	985	26	-	2,538	DOC	Cholelithiasis	
8	7	10	8	8	-	6	11	6	6	5	-	7	ALS		
187	123	33	14	4	13	190	122	29	18	5	16	377	DISCH		A41
6,830	2,806	523	83	3,191	227	2,738	2,023	340	215	65	95	9,568	DOC	Other septicaemia	
37	23	16	6	798	17	14	17	12	12	13	6	25	ALS		
241	56	143	41	1	-	123	37	65	17	4	-	364	DISCH		E11
3,512	938	2,183	389	2	-	1,458	334	907	196	21	-	4,970	DOC	Non-insulin-dependent diabetes mellitus	
15	17	15	9	2	-	12	9	14	12	5	-	14	ALS		
292	52	159	81	-	-	62	35	23	3	-	1	354	DISCH		I21
2,826	1,495	889	442	-	-	405	252	132	17	-	4	3,231	DOC	Acute myocardial infarction	
10	29	6	5	-	-	7	7	6	6	-	4	9	ALS		

<i>Male</i>						<i>Female</i>						<i>Grand Total</i>	<i>DISCH DOC ALS</i>	<i>Principal Diagnosis</i>	<i>ICD10 Code</i>
<i>Age Groups</i>						<i>Age Groups</i>									
<i>Total</i>	<i>65+</i>	<i>45-64</i>	<i>15-44</i>	<i>1-14</i>	<i>1&gt;</i>	<i>Total</i>	<i>65+</i>	<i>45-64</i>	<i>15-44</i>	<i>1-14</i>	<i>1&gt;</i>				
258	8	83	164	2	1	61	3	24	30	4	-	319	DISCH		
1,541	96	495	924	23	3	299	14	124	137	24	-	1,840	DOC	Calculus of kidney and ureter	N20
6	12	6	6	12	3	5	5	5	5	6	-	6	ALS		
NA	NA	NA	NA	NA	NA	316	-	6	310	-	-	316	DISCH		O16
NA	NA	NA	NA	NA	NA	1,258	-	26	1,232	-	-	1,258	DOC	Unspecified maternal hypertension	
NA	NA	NA	NA	NA	NA	4	-	4	4	-	-	4	ALS		
161	94	61	6	-	-	154	110	39	5	-	-	315	DISCH		I11
1,154	670	454	30	-	-	943	649	260	34	-	-	2,097	DOC	Hypertensive heart disease	
7	7	7	5	-	-	6	6	7	7	-	-	7	ALS		
202	2	27	167	6	-	111	-	12	94	5	-	313	DISCH		J34
768	15	91	640	22	-	403	-	42	344	17	-	1,171	DOC	Other disorders of nose and nasal sinuses	
4	8	3	4	4	-	4	-	4	4	3	-	4	ALS		
NA	NA	NA	NA	NA	NA	308	-	2	306	-	-	308	DISCH		O20
NA	NA	NA	NA	NA	NA	1,712	-	9	1,703	-	-	1,712	DOC	Haemorrhage in early pregnancy	
NA	NA	NA	NA	NA	NA	6	-	5	6	-	-	6	ALS		
169	5	8	13	108	35	136	1	9	17	71	38	305	DISCH		Z01
296	39	32	42	131	52	222	9	39	50	86	38	518	DOC	Other special examinations and investigations of persons without complaint or reported diagnosis	
2	8	4	3	1	1	2	9	4	3	1	1	2	ALS		
152	34	77	41	-	-	139	43	77	19	-	-	291	DISCH		I10
624	119	323	182	-	-	507	173	273	61	-	-	1,131	DOC	Essential (primary) hypertension	
4	4	4	4	-	-	4	4	4	3	-	-	4	ALS		
168	9	16	90	40	13	123	7	22	63	30	1	291	DISCH		T81
938	113	146	503	139	37	816	92	216	422	78	8	1,754	DOC	Complications of procedures, not elsewhere classified	
6	13	9	6	3	3	7	13	10	7	3	8	6	ALS		
NA	NA	NA	NA	NA	NA	290	-	-	290	-	-	290	DISCH		O23
NA	NA	NA	NA	NA	NA	1,047	-	-	1,047	-	-	1,047	DOC	Infections of genitourinary tract in pregnancy	
NA	NA	NA	NA	NA	NA	4	-	-	4	-	-	4	ALS		

<i>Male</i>						<i>Female</i>						<i>Grand Total</i>	<i>DISCH DOC ALS</i>	<i>Principal Diagnosis</i>	<i>ICD10 Code</i>
<i>Age Groups</i>						<i>Age Groups</i>									
<i>Total</i>	<i>65+</i>	<i>45-64</i>	<i>15-44</i>	<i>1-14</i>	<i>1&gt;</i>	<i>Total</i>	<i>65+</i>	<i>45-64</i>	<i>15-44</i>	<i>1-14</i>	<i>1&gt;</i>				
88	27	6	22	10	23	187	39	39	55	38	16	275	DISCH		N39
547	208	33	108	48	150	1,221	316	304	282	235	84	1,768	DOC	Other disorders of urinary system	
6	8	6	5	5	7	7	8	8	5	6	5	6	ALS		
126	35	70	21	-	-	145	69	54	22	-	-	271	DISCH		I12
1,561	745	690	126	-	-	1,735	822	795	118	-	-	3,296	DOC	Hypertensive renal disease	
12	21	10	6	-	-	12	12	15	5	-	-	12	ALS		
133	19	33	77	4	-	116	16	60	39	1	-	249	DISCH		M54
1,019	210	313	483	13	-	958	175	571	208	4	-	1,977	DOC	Dorsalgia	
8	11	9	6	3	-	8	11	10	5	4	-	8	ALS		
112	16	24	49	22	1	134	27	31	35	40	1	246	DISCH		K29
410	107	119	145	35	4	584	127	236	125	95	1	994	DOC	Gastritis and duodenitis	
4	7	5	3	2	4	4	5	8	4	2	1	4	ALS		
156	6	16	61	34	39	89	7	12	31	23	16	245	DISCH		R50
895	40	154	378	154	169	645	32	79	235	198	101	1,540	DOC	Fever of unknown origin	
6	7	10	6	5	4	7	5	7	8	9	6	6	ALS		
180	11	40	129	-	-	60	4	15	40	1	-	240	DISCH		I84
1,190	100	299	791	-	-	301	22	86	192	1	-	1,491	DOC	Haemorrhoids	
7	9	7	6	-	-	5	6	6	5	1	-	6	ALS		
122	37	18	51	16	-	117	66	38	8	5	-	239	DISCH		S72
1,773	600	254	733	186	-	1,839	1,033	530	214	62	-	3,612	DOC	Fracture of femur	
15	16	14	14	12	-	16	16	14	27	12	-	15	ALS		
143	109	33	-	1	-	92	74	18	-	-	-	235	DISCH		J44
1,426	1,033	392	-	1	-	1,057	935	122	-	-	-	2,483	DOC	Other chronic obstructive pulmonary disease	
10	9	12	-	1	-	11	13	7	-	-	-	11	ALS		
NA	NA	NA	NA	NA	NA	234	-	5	229	-	-	234	DISCH		O32
NA	NA	NA	NA	NA	NA	1,207	-	37	1,170	-	-	1,207	DOC	Maternal care for known or suspected malpresentation of fetus	
NA	NA	NA	NA	NA	NA	5	-	7	5	-	-	5	ALS		

Male						Female						Grand Total	DISCH DOC ALS	Principal Diagnosis	ICD10 Code
Age Groups						Age Groups									
Total	65+	45-64	15-44	1-14	1>	Total	65+	45-64	15-44	1-14	1>				
130	55	25	43	4	3	95	33	19	34	6	3	225	DISCH		J98
1,100	412	233	342	28	85	1,111	284	229	327	114	157	2,211	DOC	Other respiratory disorders	
8	7	9	8	7	28	12	9	12	10	19	52	10	ALS		
147	3	30	110	1	3	77	2	15	60	-	-	224	DISCH		K60
836	28	169	628	5	6	418	18	88	312	-	-	1,254	DOC	Fissure and fistula of anal and rectal regions	
6	9	6	6	5	2	5	9	6	5	-	-	6	ALS		
173	4	17	125	27	-	46	7	9	26	4	-	219	DISCH		S82
1,654	58	337	1,111	148	-	307	72	84	144	7	-	1,961	DOC	Fracture of lower leg, including ankle	
10	15	20	9	5	-	7	10	9	6	2	-	9	ALS		
NA	NA	NA	NA	NA	NA	217	2	113	101	1	-	217	DISCH		N93
NA	NA	NA	NA	NA	NA	753	24	413	313	3	-	753	DOC	Other abnormal uterine and vaginal bleeding	
NA	NA	NA	NA	NA	NA	3	12	4	3	3	-	3	ALS		
NA	NA	NA	NA	NA	NA	211	31	107	73	-	-	211	DISCH		C50
NA	NA	NA	NA	NA	NA	2,452	550	1,118	784	-	-	2,452	DOC	Malignant neoplasm of breast	
NA	NA	NA	NA	NA	NA	12	18	10	11	-	-	12	ALS		
98	30	36	26	6	-	100	38	40	18	4	-	198	DISCH		E14
568	251	169	121	27	-	570	202	258	100	10	-	1,138	DOC	Unspecified diabetes mellitus	
6	8	5	5	5	-	6	5	6	6	3	-	6	ALS		
NA	NA	NA	NA	NA	NA	198	-	-	198	-	-	198	DISCH		O71
NA	NA	NA	NA	NA	NA	453	-	-	453	-	-	453	DOC	Other obstetric trauma	
NA	NA	NA	NA	NA	NA	2	-	-	2	-	-	2	ALS		
NA	NA	NA	NA	NA	NA	197	-	90	105	2	-	197	DISCH		N92
NA	NA	NA	NA	NA	NA	722	-	323	395	4	-	722	DOC	Excessive, frequent and irregular menstruation	
NA	NA	NA	NA	NA	NA	4	-	4	4	2	-	4	ALS		

<i>Male</i>						<i>Female</i>						<i>Grand Total</i>	<i>DISCH DOC ALS</i>	<i>Principal Diagnosis</i>	<i>ICD10 Code</i>
<i>Age Groups</i>						<i>Age Groups</i>									
<i>Total</i>	<i>65+</i>	<i>45-64</i>	<i>15-44</i>	<i>1-14</i>	<i>1&gt;</i>	<i>Total</i>	<i>65+</i>	<i>45-64</i>	<i>15-44</i>	<i>1-14</i>	<i>1&gt;</i>				
NA	NA	NA	NA	NA	NA	193	-	-	193	-	-	193	DISCH	( )	O24
NA	NA	NA	NA	NA	NA	1,017	-	-	1,017	-	-	1,017	DOC	Diabetes mellitus in pregnancy	
NA	NA	NA	NA	NA	NA	5	-	-	5	-	-	5	ALS		
NA	NA	NA	NA	NA	NA	192	-	7	185	-	-	192	DISCH		O02
NA	NA	NA	NA	NA	NA	583	-	17	566	-	-	583	DOC	Other abnormal products of conception	
NA	NA	NA	NA	NA	NA	3	-	2	3	-	-	3	ALS		
107	4	17	44	39	3	84	3	8	37	33	3	191	DISCH	( )	E10
791	47	300	228	195	21	586	24	152	230	164	16	1,377	DOC	Insulin-dependent diabetes mellitus	
7	12	18	5	5	7	7	8	19	6	5	5	7	ALS		
92	33	33	26	-	-	96	55	33	8	-	-	188	DISCH		I48
396	193	142	61	-	-	463	319	123	21	-	-	859	DOC	Atrial fibrillation and flutter	
4	6	4	2	-	-	5	6	4	3	-	-	5	ALS		
121	5	12	17	65	22	67	3	3	10	42	9	188	DISCH		R56
397	44	60	45	136	112	200	4	9	44	116	27	597	DOC	Convulsions, not elsewhere classified	
3	9	5	3	2	5	3	1	3	4	3	3	3	ALS		
155	1	7	110	33	4	32	-	1	14	16	1	187	DISCH		S02
615	3	44	479	84	5	101	-	3	31	66	1	716	DOC	Fracture of skull and facial bones	
4	3	6	4	3	1	3	-	3	2	4	1	4	ALS		
116	5	25	59	23	4	70	3	10	28	23	6	186	DISCH		L02
823	99	202	435	80	7	359	21	76	177	72	13	1,182	DOC	Cutaneous abscess, furuncle and carbuncle	
7	20	8	7	3	2	5	7	8	6	3	2	6	ALS		
103	1	3	26	63	10	82	2	10	26	36	8	185	DISCH		H66
358	14	14	116	183	31	315	6	29	138	109	33	673	DOC	Suppurative and unspecified otitis media	
3	14	5	4	3	3	4	3	3	5	3	4	4	ALS		



Male						Female						Grand Total	DISCH DOC ALS	Principal Diagnosis	ICD10 Code
Age Groups						Age Groups									
Total	65+	45-64	15-44	1-14	1>	Total	65+	45-64	15-44	1-14	1>				
NA	NA	NA	NA	NA	NA	184	-	-	184	-	-	184	DISCH		O47
NA	NA	NA	NA	NA	NA	534	-	-	534	-	-	534	DOC	False labour	
NA	NA	NA	NA	NA	NA	3	-	-	3	-	-	3	ALS		
125	4	35	86	-	-	52	5	22	25	-	-	177	DISCH		M51
1,105	29	337	739	-	-	466	75	192	199	-	-	1,571	DOC	Other intervertebral disc disorders	
9	7	10	9	-	-	9	15	9	8	-	-	9	ALS		
105	34	55	16	-	-	71	39	30	2	-	-	176	DISCH		I25
728	296	365	67	-	-	669	482	182	5	-	-	1,397	DOC	Chronic ischaemic heart disease	
7	9	7	4	-	-	9	12	6	3	-	-	8	ALS		
113	14	22	75	2	-	60	2	5	52	1	-	173	DISCH		A16
2,361	239	544	1,553	25	-	1,081	17	53	1,005	6	-	3,442	DOC	Respiratory tuberculosis, not confirmed	
21	17	25	21	13	-	18	9	11	19	6	-	20	ALS	bacteriologically or histologically	
101	3	4	26	36	32	68	4	4	15	26	19	169	DISCH		J06
1,392	9	10	96	109	1,168	224	21	26	40	83	54	1,616	DOC	Acute upper respiratory infections of multiple and	
14	3	3	4	3	37	3	5	7	3	3	3	10	ALS	unspecified sites	
106	37	24	39	5	1	59	24	14	17	4	-	165	DISCH		K92
556	250	169	113	17	7	789	632	76	71	10	-	1,345	DOC	Other diseases of digestive system	
5	7	7	3	3	7	13	26	5	4	3	-	8	ALS		
113	1	28	83	1	-	48	4	12	32	-	-	161	DISCH		N23
444	4	122	317	1	-	220	17	63	140	-	-	664	DOC	Unspecified renal colic	
4	4	4	4	1	-	5	4	5	4	-	-	4	ALS		
113	1	15	77	20	-	37	4	7	18	8	-	150	DISCH		S52
621	11	89	468	53	-	158	29	37	77	15	-	779	DOC	Fracture of forearm	
5	11	6	6	3	-	4	7	5	4	2	-	5	ALS		

<i>Male</i>						<i>Female</i>						<i>Grand Total</i>	<i>DISCH DOC ALS</i>	<i>Principal Diagnosis</i>	<i>ICD10 Code</i>
<i>Age Groups</i>						<i>Age Groups</i>									
<i>Total</i>	<i>65+</i>	<i>45-64</i>	<i>15-44</i>	<i>1-14</i>	<i>1&gt;</i>	<i>Total</i>	<i>65+</i>	<i>45-64</i>	<i>15-44</i>	<i>1-14</i>	<i>1&gt;</i>				
88	51	30	6	1	-	60	37	18	1	2	2	148	DISCH	Heart failure	I50
481	267	175	30	9	-	460	273	166	8	9	4	941	DOC		
5	5	6	5	9	-	8	7	9	8	5	2	6	ALS		
84	12	25	33	11	3	56	5	11	24	11	5	140	DISCH	Cellulitis	L03
511	113	155	175	58	10	268	34	64	101	38	31	779	DOC		
6	9	6	5	5	3	5	7	6	4	3	6	6	ALS		
85	7	6	49	21	2	52	4	8	24	14	2	137	DISCH	Epilepsy	G40
282	47	37	138	49	11	258	18	28	141	64	7	540	DOC		
3	7	6	3	2	6	5	5	4	6	5	4	4	ALS		
71	41	24	5	1	-	65	44	16	5	-	-	136	DISCH	Stroke, not specified as haemorrhage or infarction	I64
968	634	265	59	10	-	1,042	605	396	41	-	-	2,010	DOC		
14	15	11	12	10	-	16	14	25	8	-	-	15	ALS		
105	2	8	86	9	-	27	5	6	14	2	-	132	DISCH	Other orthopaedic follow-up care	Z47
408	21	32	297	58	-	154	61	27	57	9	-	562	DOC		
4	11	4	3	6	-	6	12	5	4	5	-	4	ALS		
NA	NA	NA	NA	NA	NA	131	-	-	131	-	-	131	DISCH	Ectopic pregnancy	O00
NA	NA	NA	NA	NA	NA	633	-	-	633	-	-	633	DOC		
NA	NA	NA	NA	NA	NA	5	-	-	5	-	-	5	ALS		
76	12	48	16	-	-	50	4	35	11	-	-	126	DISCH	Malignant neoplasm of colon	C18
504	64	349	91	-	-	442	24	318	100	-	-	946	DOC		
7	5	7	6	-	-	9	6	9	9	-	-	8	ALS		
28	-	4	21	3	-	96	1	4	79	12	-	124	DISCH	Poisoning by nonopioid analgesics, antipyretics and antirheumatics	T39
45	-	7	35	3	-	218	23	6	158	31	-	263	DOC		
2	-	2	2	1	-	2	23	2	2	3	-	2	ALS		

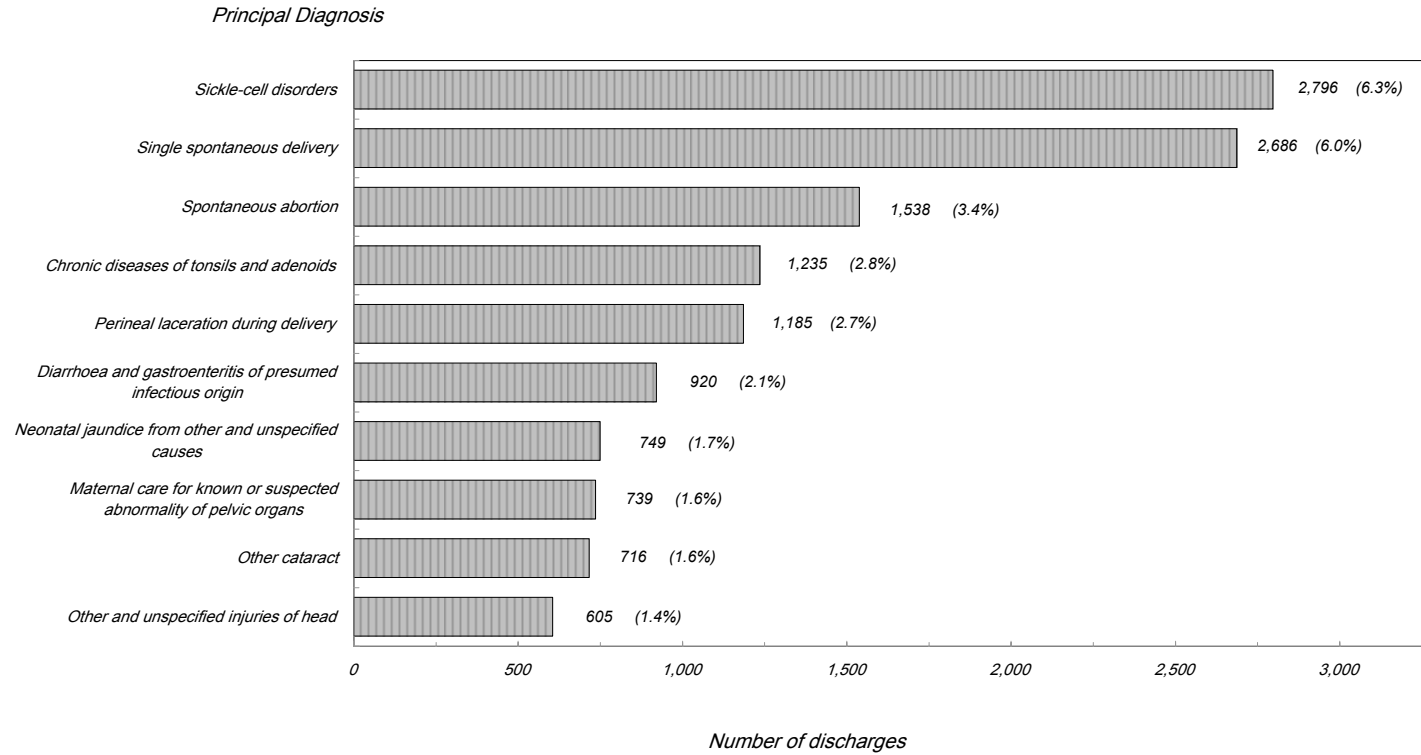
Male						Female						Grand Total	DISCH DOC ALS	Principal Diagnosis	ICD10 Code
Age Groups						Age Groups									
Total	65+	45-64	15-44	1-14	1>	Total	65+	45-64	15-44	1-14	1>				
81	30	34	15	2	-	42	27	14	1	-	-	123	DISCH	Cerebral infarction	I63
1,860	824	645	376	15	-	1,015	738	273	4	-	-	2,875	DOC		
23	27	19	25	8	-	24	27	20	4	-	-	23	ALS		
80	43	36	1	-	-	40	24	14	2	-	-	120	DISCH	Malignant neoplasm of bronchus and lung	C34
1,101	612	464	25	-	-	498	288	192	18	-	-	1,599	DOC		
14	14	13	25	-	-	12	12	14	9	-	-	13	ALS		
NA	NA	NA	NA	NA	NA	120	-	1	119	-	-	120	DISCH	Single delivery by forceps and vacuum extractor	O81
NA	NA	NA	NA	NA	NA	437	-	2	435	-	-	437	DOC		
NA	NA	NA	NA	NA	NA	4	-	2	4	-	-	4	ALS		
27	6	2	13	2	4	89	-	5	76	2	6	116	DISCH	Examination and observation for other reasons	Z04
81	42	4	26	2	7	368	-	16	276	4	72	449	DOC		
3	7	2	2	1	2	4	-	3	4	2	12	4	ALS		
44	3	5	17	7	12	69	8	18	27	5	11	113	DISCH	Gastro-oesophageal reflux disease	K21
163	22	19	76	19	27	387	78	92	143	17	57	550	DOC		
4	7	4	4	3	2	6	10	5	5	3	5	5	ALS		
93	16	27	49	1	-	18	5	5	8	-	-	111	DISCH	Duodenal ulcer	K26
588	126	153	305	4	-	97	33	35	29	-	-	685	DOC		
6	8	6	6	4	-	5	7	7	4	-	-	6	ALS		
55	1	2	14	38	-	55	2	7	18	27	1	110	DISCH	Nonsuppurative otitis media	H65
173	3	7	53	110	-	170	14	19	64	69	4	343	DOC		
3	3	4	4	3	-	3	7	3	4	3	4	3	ALS		
60	-	-	1	3	56	48	3	2	3	1	39	108	DISCH	Acute bronchiolitis	J21
271	-	-	6	5	260	174	12	3	12	3	144	445	DOC		
5	-	-	6	2	5	4	4	2	4	3	4	4	ALS		

<i>Male</i>						<i>Female</i>						<i>Grand Total</i>	<i>DISCH DOC ALS</i>	<i>Principal Diagnosis</i>	<i>ICD10 Code</i>
<i>Age Groups</i>						<i>Age Groups</i>									
<i>Total</i>	<i>65+</i>	<i>45-64</i>	<i>15-44</i>	<i>1-14</i>	<i>1&gt;</i>	<i>Total</i>	<i>65+</i>	<i>45-64</i>	<i>15-44</i>	<i>1-14</i>	<i>1&gt;</i>				
NA	NA	NA	NA	NA	NA	106	3	9	89	3	2	106	DISCH	Noninflammatory disorders of ovary, fallopian tube and broad ligament	N83
NA	NA	NA	NA	NA	NA	523	45	49	400	16	13	523	DOC		
NA	NA	NA	NA	NA	NA	5	15	5	4	5	7	5	ALS		
NA	NA	NA	NA	NA	NA	105	-	-	105	-	-	105	DISCH	Supervision of normal pregnancy	Z34
NA	NA	NA	NA	NA	NA	330	-	-	330	-	-	330	DOC		
NA	NA	NA	NA	NA	NA	3	-	-	3	-	-	3	ALS		
71	-	-	-	-	71	32	-	-	-	-	32	103	DISCH	Neonatal jaundice due to other excessive haemolysis	P58
365	-	-	-	-	365	155	-	-	-	-	155	520	DOC		
5	-	-	-	-	5	5	-	-	-	-	5	5	ALS		
27	4	8	12	3	-	72	4	24	43	1	-	99	DISCH	Umbilical hernia	K42
142	33	40	61	8	-	430	46	159	223	2	-	572	DOC		
5	8	5	5	3	-	6	12	7	5	2	-	6	ALS		
98	-	4	94	-	-	1	-	-	1	-	-	99	DISCH	Internal derangement of knee	M23
529	-	19	510	-	-	7	-	-	7	-	-	536	DOC		
5	-	5	5	-	-	7	-	-	7	-	-	5	ALS		
75	-	3	70	2	-	22	-	-	20	2	-	97	DISCH	Pilonidal cyst	L05
546	-	14	519	13	-	172	-	-	161	11	-	718	DOC		
7	-	5	7	7	-	8	-	-	8	6	-	7	ALS		
48	4	17	22	5	-	47	5	22	15	5	-	95	DISCH	Other soft tissue disorders, not elsewhere classified	M79
214	20	72	93	29	-	177	35	80	54	8	-	391	DOC		
4	5	4	4	6	-	4	7	4	4	2	-	4	ALS		
NA	NA	NA	NA	NA	NA	95	-	-	95	-	-	95	DISCH	Premature separation of placenta [abruptio placentae]	O45
NA	NA	NA	NA	NA	NA	444	-	-	444	-	-	444	DOC		
NA	NA	NA	NA	NA	NA	5	-	-	5	-	-	5	ALS		

Male						Female						Grand Total	DISCH DOC ALS	Principal Diagnosis	ICD10 Code
Age Groups						Age Groups									
Total	65+	45-64	15-44	1-14	1>	Total	65+	45-64	15-44	1-14	1>				
NA	NA	NA	NA	NA	NA	90	2	28	60	-	-	90	DISCH		D25
NA	NA	NA	NA	NA	NA	575	9	217	349	-	-	575	DOC	Leiomyoma of uterus	
NA	NA	NA	NA	NA	NA	6	5	8	6	-	-	6	ALS		
54	11	35	8	-	-	36	17	16	2	-	1	90	DISCH		I24
211	49	133	29	-	-	171	88	72	7	-	4	382	DOC	Other acute ischaemic heart diseases	
4	4	4	4	-	-	5	5	5	4	-	4	4	ALS		
NA	NA	NA	NA	NA	NA	90	-	-	90	-	-	90	DISCH	( )	O30
NA	NA	NA	NA	NA	NA	617	-	-	617	-	-	617	DOC	Multiple gestation	
NA	NA	NA	NA	NA	NA	7	-	-	7	-	-	7	ALS		
44	-	-	-	-	44	46	-	-	-	-	46	90	DISCH		P07
748	-	-	-	-	748	871	-	-	-	-	871	1,619	DOC	Disorders related to short gestation and low birth weight, not elsewhere classified	
17	-	-	-	-	17	19	-	-	-	-	19	18	ALS		
54	3	-	35	16	-	35	5	3	10	16	1	89	DISCH		S42
314	16	-	263	35	-	123	34	22	42	24	1	437	DOC	Fracture of shoulder and upper arm	
6	5	-	8	2	-	4	7	7	4	2	1	5	ALS		
88	58	30	-	-	-	NA	NA	NA	NA	NA	NA	88	DISCH		N40
831	498	333	-	-	-	NA	NA	NA	NA	NA	NA	831	DOC	Hyperplasia of prostate	
9	9	11	-	-	-	NA	NA	NA	NA	NA	NA	9	ALS		
54	10	15	16	9	4	33	12	9	6	2	4	87	DISCH		K56
439	109	131	156	29	14	266	122	90	38	6	10	705	DOC	Paralytic ileus and intestinal obstruction without hernia	
8	11	9	10	3	4	8	10	10	6	3	3	8	ALS		
30	12	10	3	2	3	53	20	11	18	3	1	83	DISCH		E16
213	138	45	13	4	13	251	82	75	79	10	5	464	DOC	Other disorders of pancreatic internal secretion	
7	12	5	4	2	4	5	4	7	4	3	5	6	ALS		

<i>Male</i>						<i>Female</i>						<i>Grand Total</i>	<i>DISCH DOC ALS</i>	<i>Principal Diagnosis</i>	<i>ICD10 Code</i>
<i>Age Groups</i>						<i>Age Groups</i>									
<i>Total</i>	<i>65+</i>	<i>45-64</i>	<i>15-44</i>	<i>1-14</i>	<i>1&gt;</i>	<i>Total</i>	<i>65+</i>	<i>45-64</i>	<i>15-44</i>	<i>1-14</i>	<i>1&gt;</i>				
NA	NA	NA	NA	NA	NA	81	15	63	3	-	-	81	DISCH	Menopausal and other perimenopausal disorders	N95
NA	NA	NA	NA	NA	NA	320	87	223	10	-	-	320	DOC		
NA	NA	NA	NA	NA	NA	4	6	4	3	-	-	4	ALS		
51	1	5	23	22	-	30	1	6	6	15	2	81	DISCH	Foreign body in respiratory tract	T17
122	2	15	55	50	-	49	9	7	6	24	3	171	DOC		
2	2	3	2	2	-	2	9	1	1	2	2	2	ALS		
13,277	1,741	2,437	5,504	2,534	1,061	19,463	1,688	2,202	13,095	1,718	760	32,740	DISCH	100 Total Leading 100 Diagnoses	
85,193	18,044	18,161	29,961	11,612	7,415	92,089	15,679	14,817	50,693	5,906	4,994	177,282	DOC		
6	10	7	5	5	7	5	9	7	4	3	7	5	ALS		
6,179	849	1,248	2,485	1,078	519	5,701	775	1,054	2,793	669	410	11,880	DISCH	Total of Others	
49,579	9,378	10,963	17,882	5,411	5,945	45,867	9,735	10,224	17,086	3,588	5,234	95,446	DOC		
8	11	9	7	5	11	8	13	10	6	5	13	8	ALS		
19,456	2,590	3,685	7,989	3,612	1,580	25,164	2,463	3,256	15,888	2,387	1,170	44,620	DISCH	Total	
134,772	27,422	29,124	47,843	17,023	13,360	137,956	25,414	25,041	67,779	9,494	10,228	272,728	DOC		
7	11	8	6	5	8	5	10	8	4	4	9	6	ALS		

**2004**  
**Discharges by The Ten Leading Diagnosis 2004**



Reference: Table 9.14

9.14 :

<i>Disch.</i>	<i>Post Operation Days</i>				<i>Pre Operation Days</i>				<i>Department</i>
	<i>Avg.L.S.</i>	<i>Median</i>	<i>Max.</i>	<i>Min.</i>	<i>Avg.L.S.</i>	<i>Median</i>	<i>Max.</i>	<i>Min.</i>	
1,865	5	2	145	-	4	1	385	-	Medical
4,537	5	3	171	-	3	1	251	-	Surgical
967	3	2	21	-	3	2	24	-	Ophthalmology
2,436	2	2	46	-	1	1	35	-	E.N.T.
253	3	2	29	-	2	1	22	-	Dental
390	6	-	981	-	7	2	453	-	Pediatrics
1,682	7	4	119	-	2	1	106	-	Orthopedic Surgery & Fracture
308	7	4	96	-	4	1	60	-	Plastic Surgery & Burns
10,310	2	1	64	-	3	1	12,423	-	Obstetrics & Gynecology
52	10	3	96	-	27	17	146	-	SCBU

Avg.L.S: Average Length of Stay .

المتوسط : متوسط مدة الإقامة .



<i>Type of Anaesthesia</i>	<i>2004</i>	<i>2003</i>	<i>2002</i>	<i>2001</i>	<i>2000</i>
General anaesthesia	15,033	14,685	15,333	14,179	14,543
Local anaesthesia	4,349	3,785	3,603	3,696	4,485
Spinal , epidural & regional	1,999	1,994	4,023	2,215	1,384
Sedation	3,526	1,177	1,455	2,808	2,551
<b>Total</b>	<b>24,907</b>	<b>21,641</b>	<b>24,414</b>	<b>22,898</b>	<b>22,963</b>

Cause of Death	Total			48 48 hrs & over			48 Less than 48 hrs			Sex	ICD10 Code	
	Total	Non-Bah	Bah	Total	Non-Bah	Bah	Total	Non-Bah	Bah			
Intestinal infectious Diseases	-	-	-	-	-	-	-	-	-	-	Male	A00-A09
	1	-	1	1	-	1	-	-	-	-	Female	
	1	-	1	1	-	1	-	-	-	-	Total	
Tuberculosis	7	1	6	6	-	6	1	1	-	-	Male	( ) A15-A19
	1	-	1	1	-	1	-	-	-	-	Female	
	8	1	7	7	-	7	1	1	-	-	Total	
Other bacterial diseases	122	8	114	98	7	91	24	1	23	Male	A30-A49	
	112	7	105	89	4	85	23	3	20	Female		
	234	15	219	187	11	176	47	4	43	Total		
Infections with a predominantly sexual mode of transmission	-	-	-	-	-	-	-	-	-	-	Male	A50-A64
	1	-	1	1	-	1	-	-	-	-	Female	
	1	-	1	1	-	1	-	-	-	-	Total	
Viral hepatitis	1	-	1	-	-	-	1	-	1	Male	B15-B19	
	-	-	-	-	-	-	-	-	-	-		Female
	1	-	1	-	-	-	1	-	1	Total		
Human immunodeficiency virus (HIV) disease	3	-	3	3	-	3	-	-	-	Male	( ) B20-B24	
	1	-	1	1	-	1	-	-	-	Female		
	4	-	4	4	-	4	-	-	-	Total		
Protozoal diseases	-	-	-	-	-	-	-	-	-	-	Male	B50-B64
	1	1	-	1	1	-	-	-	-	-	Female	
	1	1	-	1	1	-	-	-	-	-	Total	
Malignant neoplasms of lip, oral cavity and pharynx	1	-	1	1	-	1	-	-	-	Male	C00-C14	
	1	-	1	1	-	1	-	-	-	Female		
	2	-	2	2	-	2	-	-	-	Total		
Malignant neoplasms of digestive organs	-	2	19	17	2	15	4	-	4	Male	C15-C26	
	-	2	10	11	1	10	1	1	-	Female		
	-	4	29	28	3	25	5	1	4	Total		
Malignant neoplasm of respiratory and intrathoracic organs	22	2	20	19	2	17	3	-	3	Male	C30-C39	
	6	-	6	5	-	5	1	-	1	Female		
	28	2	26	24	2	22	4	-	4	Total		

Cause of Death	Total			48 hrs & over			48 Less than 48 hrs			Sex	ICD10 Code
	Total	Non-Bah	Bah	Total	Non-Bah	Bah	Total	Non-Bah	Bah		
Malignant neoplasm of bone and articular cartilage	1	-	1	1	-	1	-	-	-	Male	C40-C41
	1	-	1	1	-	1	-	-	-	Female	
	2	-	2	2	-	2	-	-	-	Total	
Malignant neoplasms of mesothelial and soft tissues	-	-	-	-	-	-	-	-	-	Male	C45-C49
	1	1	-	1	1	-	-	-	-	Female	
	1	1	-	1	1	-	-	-	-	Total	
Malignant neoplasms of breast	-	-	-	-	-	-	-	-	-	Male	C50
	23	2	21	20	2	18	3	-	3	Female	
	23	2	21	20	2	18	3	-	3	Total	
Malignant neoplasms of female genital organs	-	-	-	-	-	-	-	-	-	Male	C51-C58
	10	1	9	10	1	9	-	-	-	Female	
	10	1	9	10	1	9	-	-	-	Total	
Malignant neoplasms of male genital organs	2	-	2	2	-	2	-	-	-	Male	C60-C63
	-	-	-	-	-	-	-	-	-	Female	
	2	-	2	2	-	2	-	-	-	Total	
Malignant neoplasms of urinary tract	7	-	7	6	-	6	1	-	1	Male	C64-C68
	3	-	3	3	-	3	-	-	-	Female	
	10	-	10	9	-	9	1	-	1	Total	
Malignant neoplasms of eye, brain & other parts of central nervous system	5	1	4	5	1	4	-	-	-	Male	C69-C72
	2	-	2	2	-	2	-	-	-	Female	
	7	1	6	7	1	6	-	-	-	Total	
Malignant neoplasms of thyroid and other endocrine glands	-	-	-	-	-	-	-	-	-	Male	C73-C75
	1	-	1	1	-	1	-	-	-	Female	
	1	-	1	1	-	1	-	-	-	Total	
Malignant neoplasms of ill-defined, secondary and unspecified sites	7	1	6	6	1	5	1	-	1	Male	C76-C80
	2	-	2	2	-	2	-	-	-	Female	
	9	1	8	8	1	7	1	-	1	Total	
Malignant neoplasm of lymphoid, haematopoietic and related tissue	12	3	9	9	2	7	3	1	2	Male	C81-C96
	4	-	4	3	-	3	1	-	1	Female	
	16	3	13	12	2	10	4	1	3	Total	

Cause of Death	Total			48 48 hrs & over			48 Less than 48 hrs			Sex	ICD10 Code
	Total	Non-Bah	Bah	Total	Non-Bah	Bah	Total	Non-Bah	Bah		
Neoplasms of uncertain or unknown behaviour	4	-	4	4	-	4	-	-	-	Male	D37-D48
	-	-	-	-	-	-	-	-	-	Female	
	4	-	4	4	-	4	-	-	-	Total	
Nutritional anaemias	-	-	-	-	-	-	-	-	-	Male	D50-D53
	1	-	1	1	-	1	-	-	-	Female	
	1	-	1	1	-	1	-	-	-	Total	
Haemolytic anaemias	2	-	2	2	-	2	-	-	-	Male	D55-D59
	2	-	2	2	-	2	-	-	-	Female	
	4	-	4	4	-	4	-	-	-	Total	
Aplastic and other anaemias	3	-	3	1	-	1	2	-	-	2 Male	D60-D64
	-	-	-	-	-	-	-	-	-	Female	
	3	-	3	1	-	1	2	-	-	2 Total	
Coagulation defects, purpura and other haemorrhagic conditions	4	-	4	3	-	3	1	-	-	1 Male	D65-D69
	5	-	5	4	-	4	1	-	-	1 Female	
	9	-	9	7	-	7	2	-	-	2 Total	
Disorders of thyroid gland	1	-	1	1	-	1	-	-	-	Male	E00-E07
	-	-	-	-	-	-	-	-	-	Female	
	1	-	1	1	-	1	-	-	-	Total	
Diabetes mellitus	3	-	3	3	-	3	-	-	-	Male	E10-E14
	2	-	2	2	-	2	-	-	-	Female	
	5	-	5	5	-	5	-	-	-	Total	
Metabolic disorders	6	-	6	2	-	2	4	-	-	4 Male	E70-E90
	6	-	6	4	-	4	2	-	-	2 Female	
	12	-	12	6	-	6	6	-	-	6 Total	
Inflammatory diseases of the central nervous system	2	1	1	2	1	1	-	-	-	Male	G00-G09
	-	-	-	-	-	-	-	-	-	Female	
	2	1	1	2	1	1	-	-	-	Total	
Systemic atrophies primarily affecting the central nervous system	-	-	-	-	-	-	-	-	-	Male	G10-G13
	2	-	2	2	-	2	-	-	-	Female	
	2	-	2	2	-	2	-	-	-	Total	

Cause of Death	Total			48 48 hrs & over			48 Less than 48 hrs			Sex	ICD10 Code
	Total	Non-Bah	Bah	Total	Non-Bah	Bah	Total	Non-Bah	Bah		
Neoplasms of uncertain or unknown behaviour	4	-	4	4	-	4	-	-	-	Male	D37-D48
	-	-	-	-	-	-	-	-	-	Female	
	4	-	4	4	-	4	-	-	-	Total	
Nutritional anaemias	-	-	-	-	-	-	-	-	-	Male	D50-D53
	1	-	1	1	-	1	-	-	-	Female	
	1	-	1	1	-	1	-	-	-	Total	
Haemolytic anaemias	2	-	2	2	-	2	-	-	-	Male	D55-D59
	2	-	2	2	-	2	-	-	-	Female	
	4	-	4	4	-	4	-	-	-	Total	
Aplastic and other anaemias	3	-	3	1	-	1	2	-	-	2 Male	D60-D64
	-	-	-	-	-	-	-	-	-	Female	
	3	-	3	1	-	1	2	-	-	2 Total	
Coagulation defects, purpura and other haemorrhagic conditions	4	-	4	3	-	3	1	-	-	1 Male	D65-D69
	5	-	5	4	-	4	1	-	-	1 Female	
	9	-	9	7	-	7	2	-	-	2 Total	
Disorders of thyroid gland	1	-	1	1	-	1	-	-	-	Male	E00-E07
	-	-	-	-	-	-	-	-	-	Female	
	1	-	1	1	-	1	-	-	-	Total	
Diabetes mellitus	3	-	3	3	-	3	-	-	-	Male	E10-E14
	2	-	2	2	-	2	-	-	-	Female	
	5	-	5	5	-	5	-	-	-	Total	
Metabolic disorders	6	-	6	2	-	2	4	-	-	4 Male	E70-E90
	6	-	6	4	-	4	2	-	-	2 Female	
	12	-	12	6	-	6	6	-	-	6 Total	
Inflammatory diseases of the central nervous system	2	1	1	2	1	1	-	-	-	Male	G00-G09
	-	-	-	-	-	-	-	-	-	Female	
	2	1	1	2	1	1	-	-	-	Total	
Systemic atrophies primarily affecting the central nervous system	-	-	-	-	-	-	-	-	-	Male	G10-G13
	2	-	2	2	-	2	-	-	-	Female	
	2	-	2	2	-	2	-	-	-	Total	

Cause of Death	Total			48 48 hrs & over			48 Less than 48 hrs			Sex	ICD10 Code
	Total	Non-Bah	Bah	Total	Non-Bah	Bah	Total	Non-Bah	Bah		
Polyneuropathies and other disorders of the peripheral nervous system	1	-	1	-	-	-	1	-	-	1 Male	G60-G64
	-	-	-	-	-	-	-	-	-	- Female	
	1	-	1	-	-	-	1	-	-	1 Total	
Cerebral palsy and other paralytic syndromes	2	-	2	2	-	2	-	-	-	- Male	G80-G83
	3	-	3	3	-	3	-	-	-	- Female	
	5	-	5	5	-	5	-	-	-	- Total	
Other disorders of the nervous system	6	2	4	5	1	4	1	1	1	- Male	G90-G99
	3	-	3	3	-	3	-	-	-	- Female	
	9	2	7	8	1	7	1	1	1	- Total	
Hypertensive diseases	25	3	22	21	3	18	4	-	4	4 Male	I10-I15
	21	2	19	19	2	17	2	-	2	2 Female	
	46	5	41	40	5	35	6	-	6	6 Total	
Ischaemic heart disease	24	4	20	16	2	14	8	2	6	6 Male	I20-I25
	26	1	25	20	1	19	6	-	6	6 Female	
	50	5	45	36	3	33	14	2	12	12 Total	
Pulmonary heart diseases and diseases of pulmonary circulation	1	-	1	1	-	1	-	-	-	- Male	I26-I28
	5	-	5	4	-	4	1	-	1	1 Female	
	6	-	6	5	-	5	1	-	1	1 Total	
Other forms of heart diseases	25	3	22	19	3	16	6	-	6	6 Male	I30-I52
	31	1	30	28	1	27	3	-	3	3 Female	
	56	4	52	47	4	43	9	-	9	9 Total	
Cerebrovascular diseases	41	15	26	38	15	23	3	-	3	3 Male	I60-I69
	37	2	35	33	1	32	4	1	3	3 Female	
	78	17	61	71	16	55	7	1	6	6 Total	
Diseases of veins, lymphatic vessels and lymph nodes, not elsewhere classified	1	1	-	-	-	-	1	1	1	- Male	I80-I89
	1	-	1	1	-	1	-	-	-	- Female	
	2	1	1	1	-	1	1	1	1	- Total	
Influenza and pneumonia	14	3	11	14	3	11	-	-	-	- Male	J10-J18
	7	3	4	4	2	2	3	1	2	2 Female	
	21	6	15	18	5	13	3	1	2	2 Total	

Cause of Death	Total			48 48 hrs & over			48 Less than 48 hrs			Sex	ICD10 Code	
	Total	Non-Bah	Bah	Total	Non-Bah	Bah	Total	Non-Bah	Bah			
Other acute lower respiratory infections	-	-	-	-	-	-	-	-	-	-	Male	J20-J22
	1	-	1	1	-	1	-	-	-	-	Female	
	1	-	1	1	-	1	-	-	-	-	Total	
Chronic lower respiratory diseases	11	-	11	11	-	11	-	-	-	-	Male	J40-J47
	7	-	7	6	-	6	1	-	-	1	Female	
	18	-	18	17	-	17	1	-	-	1	Total	
Lung diseases due to external agents	5	-	5	5	-	5	-	-	-	-	Male	J60-J70
	9	1	8	6	1	5	3	-	-	3	Female	
	14	1	13	11	1	10	3	-	-	3	Total	
Other respiratory diseases principally affecting the interstitium	3	-	3	1	-	1	2	-	-	2	Male	J80-J84
	5	-	5	5	-	5	-	-	-	-	Female	
	8	-	8	6	-	6	2	-	-	2	Total	
Other diseases of pleura	6	1	5	5	1	4	1	-	-	1	Male	J90-J94
	1	-	1	1	-	1	-	-	-	-	Female	
	7	1	6	6	1	5	1	-	-	1	Total	
Other diseases of the respiratory system	14	3	11	13	3	10	1	-	-	1	Male	J95-J99
	18	1	17	13	1	12	5	-	-	5	Female	
	32	4	28	26	4	22	6	-	-	6	Total	
Diseases of oral cavity, salivary glands and jaws	1	-	1	1	-	1	-	-	-	-	Male	K00-K14
	-	-	-	-	-	-	-	-	-	-	Female	
	1	-	1	1	-	1	-	-	-	-	Total	
Diseases of oesophagus, stomach and duodenum	3	1	2	3	1	2	-	-	-	-	Male	K20-K31
	1	-	1	1	-	1	-	-	-	-	Female	
	4	1	3	4	1	3	-	-	-	-	Total	
Hernia	-	-	-	-	-	-	-	-	-	-	Male	K40-K46
	1	-	1	-	-	-	1	-	-	1	Female	
	1	-	1	-	-	-	1	-	-	1	Total	
Other diseases of intestines	1	1	-	1	1	-	-	-	-	-	Male	K55-K63
	1	-	1	1	-	1	-	-	-	-	Female	
	2	1	1	2	1	1	-	-	-	-	Total	

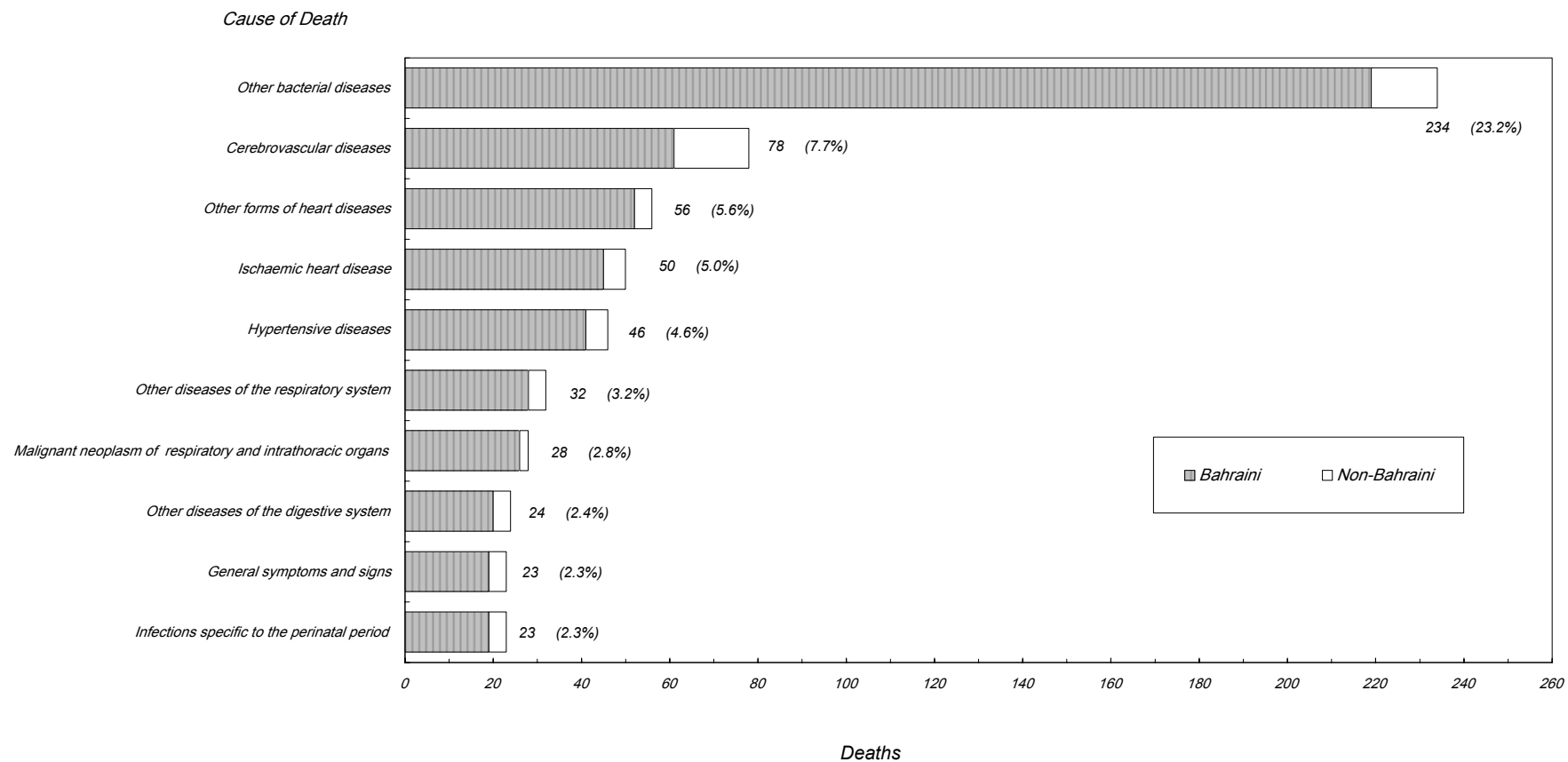
Cause of Death	Total			48 48 hrs & over			48 Less than 48 hrs			Sex	ICD10 Code
	Total	Non-Bah	Bah	Total	Non-Bah	Bah	Total	Non-Bah	Bah		
Diseases of liver	13	4	9	8	1	7	5	3	2	Male	K70-K77
	3	-	3	3	-	3	-	-	-	Female	
	16	4	12	11	1	10	5	3	2	Total	
Disorders of gallbladder, biliary tract and pancreas	1	-	1	1	-	1	-	-	-	Male	K80-K87
	2	-	2	1	-	1	1	-	1	Female	
	3	-	3	2	-	2	1	-	1	Total	
Other diseases of the digestive system	11	3	8	9	2	7	2	1	1	Male	K90-K93
	13	1	12	10	-	10	3	1	2	Female	
	24	4	20	19	2	17	5	2	3	Total	
Other disorders of the skin and subcutaneous tissue	-	-	-	-	-	-	-	-	-	Male	L80-L99
	-	-	-	1	-	1	-	-	-	Female	
	-	-	-	1	-	1	-	-	-	Total	
Dorsopathies	1	-	1	1	-	1	-	-	-	Male	M40-M54
	-	-	-	-	-	-	-	-	-	Female	
	-	-	-	1	-	1	-	-	-	Total	
Renal failure	10	-	10	10	-	10	-	-	-	Male	N17-N19
	8	-	8	7	-	7	1	-	1	Female	
	18	-	18	17	-	17	1	-	1	Total	
Delivery	-	-	-	-	-	-	-	-	-	Male	O80-O84
	-	-	-	1	-	1	-	-	-	Female	
	-	-	-	1	-	1	-	-	-	Total	
Disorders related to length of gestation and fetal growth	11	1	10	4	1	3	7	-	7	Male	P05-P08
	8	5	3	4	3	1	4	2	2	Female	
	19	6	13	8	4	4	11	2	9	Total	
Respiratory and cardiovascular disorders specific to the perinatal period	10	-	10	7	-	7	3	-	3	Male	P20-P29
	9	2	7	4	1	3	5	1	4	Female	
	19	2	17	11	1	10	8	1	7	Total	
Infections specific to the perinatal period	10	1	9	10	1	9	-	-	-	Male	P35-P39
	13	3	10	13	3	10	-	-	-	Female	
	23	4	19	23	4	19	-	-	-	Total	



Cause of Death	Total			48 48 hrs & over			48 Less than 48 hrs			Sex	ICD10 Code
	Total	Non-Bah	Bah	Total	Non-Bah	Bah	Total	Non-Bah	Bah		
Haemorrhagic and haematological disorders of fetus and newborn	4	1	3	4	1	3	-	-	-	Male	P50-P61
	9	2	7	8	1	7	1	1	-	Female	
	13	3	10	12	2	10	1	1	-	Total	
Congenital malformations of the nervous system	-	-	-	-	-	-	-	-	-	Male	Q00-Q07
	2	-	2	2	-	2	-	-	-	Female	
	2	-	2	2	-	2	-	-	-	Total	
Congenital malformations of the circulatory system	2	1	1	2	1	1	-	-	-	Male	Q20-Q28
	1	-	1	1	-	1	-	-	-	Female	
	3	1	2	3	1	2	-	-	-	Total	
Congenital malformations of the respiratory system	-	-	-	-	-	-	-	-	-	Male	Q30-Q34
	1	-	1	-	-	-	1	-	1	Female	
	1	-	1	-	-	-	1	-	1	Total	
Congenital malformations of the urinary system	1	-	1	-	-	-	1	-	-	1 Male	Q60-Q64
	-	-	-	-	-	-	-	-	-	Female	
	1	-	1	-	-	-	1	-	1	Total	
Congenital malformations and deformations of the musculoskeletal system	1	-	1	-	-	-	1	-	-	1 Male	Q65-Q79
	-	-	-	-	-	-	-	-	-	Female	
	1	-	1	-	-	-	1	-	1	Total	
Other congenital malformations	-	-	-	-	-	-	-	-	-	Male	Q80-Q89
	1	-	1	1	-	1	-	-	-	Female	
	1	-	1	1	-	1	-	-	-	Total	
Chromosomal abnormalities, not elsewhere classified	1	-	1	1	-	1	-	-	-	Male	Q90-Q99
	2	-	2	2	-	2	-	-	-	Female	
	3	-	3	3	-	3	-	-	-	Total	
Symptoms and signs involving the circulatory and respiratory systems	2	-	2	2	-	2	-	-	-	Male	R00-R09
	6	-	6	6	-	6	-	-	-	Female	
	8	-	8	8	-	8	-	-	-	Total	
Symptoms and signs involving the skin and subcutaneous tissue	-	-	-	-	-	-	-	-	-	Male	R20-R23
	1	-	1	-	-	-	1	-	1	Female	
	1	-	1	-	-	-	1	-	1	Total	

Cause of Death	Total			48 hrs & over			48 Less than 48 hrs			Sex	ICD10 Code
	Total	Non-Bah	Bah	Total	Non-Bah	Bah	Total	Non-Bah	Bah		
General symptoms and signs	11	3	8	9	2	7	2	1	1	Male	R50-R69
	12	1	11	10	1	9	2	-	2	Female	
	23	4	19	19	3	16	4	1	3	Total	
Ill-defined and unknown causes of mortality	-	-	-	-	-	-	-	-	-	Male	R95-R99
	1	-	1	1	-	1	-	-	-	Female	
	1	-	1	1	-	1	-	-	-	Total	
Injuries to the head	12	5	7	8	3	5	4	2	2	Male	S00-S09
	2	-	2	2	-	2	-	-	-	Female	
	14	5	9	10	3	7	4	2	2	Total	
Injuries to the neck	1	1	-	1	1	-	-	-	-	Male	S10-S19
	-	-	-	-	-	-	-	-	-	Female	
	1	1	-	1	1	-	-	-	-	Total	
Injuries to the abdomen, lower back, lumbar spine and pelvis	1	1	-	1	1	-	-	-	-	Male	S30-S39
	-	-	-	-	-	-	-	-	-	Female	
	1	1	-	1	1	-	-	-	-	Total	
Injuries to the hip and thigh	1	-	1	1	-	1	-	-	-	Male	S70-S79
	2	-	2	1	-	1	1	-	1	Female	
	3	-	3	2	-	2	1	-	1	Total	
Burns and corrosions of multiple and unspecified body regions	1	-	1	1	-	1	-	-	-	Male	T29-T32
	-	-	-	-	-	-	-	-	-	Female	
	1	-	1	1	-	1	-	-	-	Total	
Poisoning by drugs, medicaments and biological substances	2	-	2	1	-	1	1	-	1	Male	T36-T50
	1	-	1	1	-	1	-	-	-	Female	
	3	-	3	2	-	2	1	-	1	Total	
Other and unspecified effects of external causes	-	-	-	-	-	-	-	-	-	Male	T66-T78
	1	1	-	1	1	-	-	-	-	Female	
	1	1	-	1	1	-	-	-	-	Total	
Complications of surgical and medical care, not elsewhere classified	3	-	3	3	-	3	-	-	-	Male	T80-T88
	-	-	-	-	-	-	-	-	-	Female	
	3	-	3	3	-	3	-	-	-	Total	
<b>Total</b>	530	77	453	431	63	368	99	14	85	Male	ذكر انثى الجملة
	479	40	439	398	29	369	81	11	70	Female	
	1,009	117	892	829	92	737	180	25	155	Total	

**2004**  
**Deaths by Cause of Death 2004**



Reference: Table 9.17

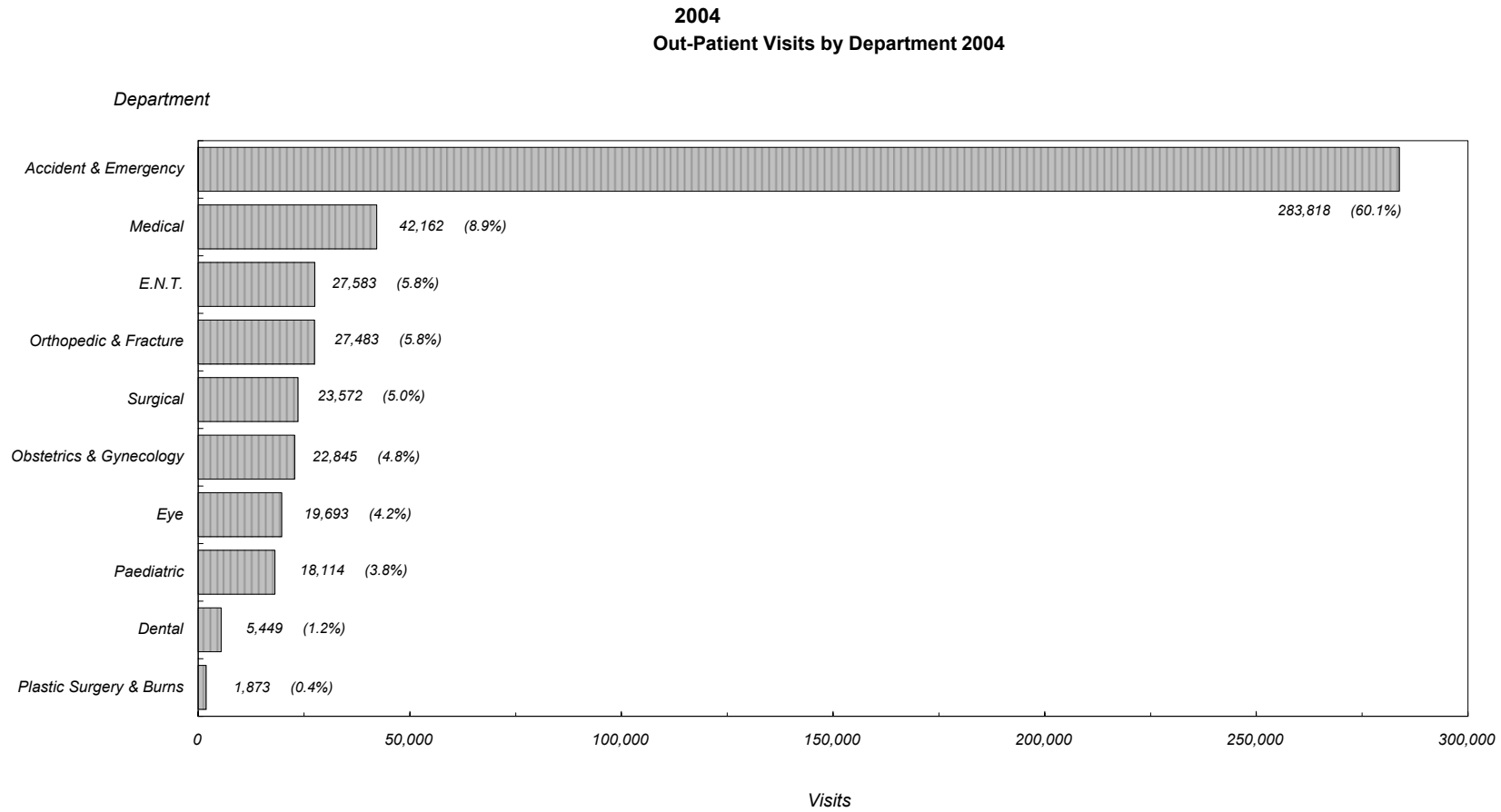
9.17 :

<i>Department / Clinic</i>	<i>2004</i>	<i>2003</i>	<i>2002</i>	<i>2001</i>	<i>2000</i>	<i>/</i>
<b>Accident &amp; Emergency</b> <sup>1</sup>	<b>283,818</b>	<b>288,597</b>	<b>268,578</b>	<b>252,878</b>	<b>234,306</b>	1
A&E Clinic	283,818	288,597	268,578	216,384	163,684	
Triage Room	NA	NA	NA	36,494	70,622	
<b>Out-Patient Clinic</b>	<b>188,774</b>	<b>203,059</b>	<b>183,590</b>	<b>195,620</b>	<b>185,785</b>	
Medical	42,162	50,808	42,110	41,004	37,711	
Surgical	23,572	28,462	29,308	29,409	24,965	
Orthopedic & Fracture	27,483	27,258	23,549	23,162	18,532	
Plastic Surgery & Burns	1,873	2,071	2,216	2,578	2,076	
Eye	19,693	20,660	17,069	21,122	24,751	
E.N.T.	27,583	27,369	21,598	24,353	25,764	
Paediatric	18,114	18,511	17,267	17,726	16,239	
Obstetrics & Gynecology	22,845	22,644	25,230	30,886	30,169	
Gynecology	10,862	11,924	11,850	12,560	11,854	
Antenatal	11,983	10,720	13,380	18,300	18,124	
Postnatal	-	-	-	26	191	
Dental	5,449	5,276	5,243	5,380	5,578	
<b>Total</b>	<b>472,592</b>	<b>491,656</b>	<b>452,168</b>	<b>448,498</b>	<b>420,091</b>	
<b>Other Services</b>						
Physiotherapy (SMC) <sup>*, 2</sup>	83,352	91,143	84,956	105,081	132,272	2, * ( )
Occupational Therapy	8,341	7,811	7,928	6,357	8,965	
Day Case Unit	7,460	7,089	7,422	6,444	6,322	

<sup>1</sup> The separation of number of the Triage patients from A&E clinic started since 2000 .

<sup>2</sup> Physiotherapy (SMC) : 2002 & 2003 data was reviewed and modified .

\* Refer to Conventions used in the report .



Reference: Table 9.18

9.18

Source of Specimen	Total	Bacteriology	Parasitology	Serology	Immunology	Cytology	Histology	FNAC	Blood Bank	Haematology	Biochemistry
Salmaniya Medical Complex	4,023,685	394,970	124,914	34,605	5,172	2,764	8,851	1,168	392,024	1,210,380	1,848,837
Limited Private Practice	14,927	3,346	164	334	18	263	8	18	371	4,122	6,283
Maternity Hospitals	57,851	19,158	418	1,187	5	39	55	3	1,843	7,140	28,003
Psychiatric Hospital	31,920	1,388	702	862	13	1	2	2	65	9,378	19,507
Health Centers *	761,473	195,702	417	25,972	374	6,311	59	1	9,721	30,575	492,341
Medical Commission	1,883	6	3	9	-	-	-	-	2	-	1,863
Public Health	1,738	344	12	43	1	-	-	-	24	591	723
College of Health Sciences	306	48	7	-	-	-	-	-	10	115	126
Military Hospital	652	46	2	34	87	1	2	1	116	22	341
Directorate of Health and Social Welfare	8,339	3,082	6	223	4	64	5	-	175	3,112	1,668
Private Hospitals	6,942	36	3	132	12	1	41	17	3,947	413	2,340
Private Clinics	3,607	220	58	88	20	10	9	73	8	1,045	2,076
Private Companies	4,889	18	8	149	5	2	1	2	43	1,941	2,720
Others	239	106	2	15	-	-	-	-	-	-	116
<b>Total</b>	<b>4,918,451</b>	<b>618,470</b>	<b>126,716</b>	<b>63,653</b>	<b>5,711</b>	<b>9,456</b>	<b>9,033</b>	<b>1,285</b>	<b>408,349</b>	<b>1,268,834</b>	<b>2,406,944</b>

\* Excluding Al Razi Health Center which is specifically provided for labour Force / Workers .

Note: New service "Immunology test" provided at SMC Lab.

<b>Radiology Procedure</b>	<b>Total</b>	<b>* LPP *</b>	<b>SMC</b>	<b>Accident &amp; Emergency</b>
Skull	9,824	485	5,890	3,449
Ultrasound	22,775	1,358	21,001	416
Spines (All Views)	15,107	932	8,142	6,033
Extremities & Joints	77,117	1,431	43,776	31,910
Chest (All Views)	39,472	756	19,156	19,560
Abdomen	13,843	62	4,989	8,792
Mammography	2,765	353	2,412	-
Hysterosalpingogram	512	150	362	-
I.V.U (All G.U.)	2,835	217	2,590	28
Barium Swallow & Barium Meal	2,307	211	2,082	14
Small Bowel Meal	91	5	86	-
Ultrasound portable	379	-	377	2
Barium Enema	900	146	743	11
Fluoroscopy	109	-	104	5
Sinogram (Fistulogram)	35	3	31	1
Sialogram	54	4	49	1
Dacrocystogram	41	2	39	-
Ultrasound Guided Biopsy	39	-	39	-
Myelogram	8	-	8	-
Angiogram	291	3	288	-
Venogram	157	2	155	-
Skeletal Survey	55	-	53	2
C.T. Head, Neck	4,725	60	4,660	5
C.T. Chest and Mediastinum	864	22	840	2
C.T. Abdomen and pelvic	2,193	42	2,137	14
C.T. extremity & all others CT	327	11	306	10

\* LPP : Limited private practice carried out by government physicians from SMC .

: ( ) \*

<i>Radiology Procedure</i>	<i>Total</i>	<i>* LPP *</i>	<i>SMC</i>	<i>Accident &amp; Emergency</i>
E.S.W.L.	302	-	301	1
E.R.C.P.	123	-	122	1
Mobiles (Ward Radiography)	11,548	-	7,827	3,721
RNI	1,668	81	1,587	-
Magnetic Resonance Imaging (MRI)	3,783	359	3,423	1
Bone Mineral Densitometry (BMD)	2,477	745	1,732	-
OPG	1,896	696	1,098	102
C.T. angiogram	4	-	4	-
Operation Theater	2,162	-	2,018	144
Copy	320	1	313	6
Percutaneous Transhepatic Cholangiogram (PTC)	18	2	16	-
Unclassified	17	-	17	-
<b>Total</b>	<b>221,143</b>	<b>8,139</b>	<b>138,773</b>	<b>74,231</b>
Interrupted	120	19	101	-
<b>Grand Total</b>	<b>221,263</b>	<b>8,158</b>	<b>138,874</b>	<b>74,231</b>



Month	Total				Dead				Alive				
	Total		Female	Male	Total		Female	Male	Total		Female	Male	
	%	No.			%	No.			%	No.			
January	7.7	75	32	43	8.1	7	4	3	7.7	68	28	40	
February	8.0	78	36	42	5.8	5	1	4	8.2	73	35	38	
March	7.2	70	33	37	4.7	4	2	2	7.4	66	31	35	
April	7.3	71	34	37	12.8	11	7	4	6.8	60	27	33	
May	8.1	79	40	39	8.1	7	4	3	8.1	72	36	36	
June	7.6	74	32	42	8.1	7	3	4	7.6	67	29	38	
July	10.2	99	45	54	11.6	10	4	6	10.0	89	41	48	
August	7.9	77	35	42	8.1	7	3	4	7.9	70	32	38	
September	8.3	81	40	41	10.5	9	4	5	8.1	72	36	36	
October	9.3	90	48	42	8.1	7	4	3	9.4	83	44	39	
November	8.4	82	38	44	10.5	9	7	2	8.2	73	31	42	
December	9.9	96	49	47	3.5	3	3	-	10.5	93	46	47	
<b>Total</b>	<b>100.0</b>	<b>972</b>	<b>462</b>	<b>510</b>	<b>100.0</b>	<b>86</b>	<b>46</b>	<b>40</b>	<b>100.0</b>	<b>886</b>	<b>416</b>	<b>470</b>	

Region	Discharges					
	Babies at Special Care Baby Unit				Mothers	
	Total		Female	Male	Total	
	%	No.			%	No.
Hidd	2.5	24	13	11	1.7	168
Muharraq	16.2	157	73	84	14.1	1,400
Manama	19.8	192	95	97	22.2	2,202
Jidhafs	11.1	108	55	53	8.7	860
Northern	8.3	81	38	43	6.3	626
Sitra	9.3	90	41	49	9.6	956
Central	6.5	63	28	35	9.2	914
Isa Town	6.4	62	32	30	8.2	810
Riffa	6.8	66	31	35	6.9	685
Western	4.8	47	22	25	5.3	529
Southern	0.5	5	4	1	0.1	9
Hamad Town	7.7	75	30	45	7.4	734
Undetermined	0.2	2	-	2	-	17
<b>Total</b>	<b>100.0</b>	<b>972</b>	<b>462</b>	<b>510</b>	<b>100.0</b>	<b>9,910</b>

<i>Speciality</i>	<i>2004</i>	<i>2003</i>	<i>2002</i>	<i>2001</i>	<i>2000</i>	
General Surgery	6,350	6,697	7,014	6,966	7,153	
Orthopaedic Surgery and Fracture	3,572	3,166	2,913	3,003	2,594	
Surgical Operations of Lung and Vascular	386	490	501	432	407	
Neurology Surgery	214	224	204	265	204	
Urology Surgery	1,581	1,641	1,965	1,865	1,705	
Pediatrics Surgery	1,482	1,403	1,575	1,326	1,469	
Plastic Surgery and Burns	862	758	538	504	580	
Dental & Maxillofacial Surgery	717	738	737	585	501	
Ophthalmology Surgery	1,067	1,074	1,068	1,122	1,328	
Ear, Nose & Throat Surgery	2,287	2,355	2,458	2,394	2,379	
Gynaecology Surgery	2,706	2,580	2,928	2,690	2,863	
Obstetrics (Caesarian)	347	611	1,553	1,298	1,202	( )
Oncology	14	15	4	9	17	
Kidney Transplant	NA	8	6	8	14	
<b>Total</b>	<b>21,585</b>	<b>21,760</b>	<b>23,464</b>	<b>22,467</b>	<b>22,416</b>	
Deaths	5	6	5	2	1	

<i>Description</i>	<i>2004</i>		<i>2003</i>		<i>2002</i>		<i>2001</i>		<i>2000</i>		
	<i>Medical</i>	<i>Surgical</i>	<i>Medical</i>	<i>Surgical</i>	<i>Medical</i>	<i>Surgical</i>	<i>Medical</i>	<i>Surgical</i>	<i>Medical</i>	<i>Surgical</i>	
Gastroscopy	876	197	901	284	1,096	213	204	309	1,366	434	
Colonoscopy	236	91	264	82	241	81	255	81	230	96	
Gastroscopy - Colonoscopy	91	29	112	31	126	36	110	32	140	19	-
ERCP	136	-	114	-	119	-	106	5	97	-	
Bronchoscopy	171	-	109	-	149	-	172	-	141	-	
Others	47	-	104	-	116	-	1,012	-	73	-	
<b>Total</b>	<b>1,557</b>	<b>317</b>	<b>1,604</b>	<b>397</b>	<b>1,847</b>	<b>330</b>	<b>1,859</b>	<b>427</b>	<b>2,047</b>	<b>549</b>	