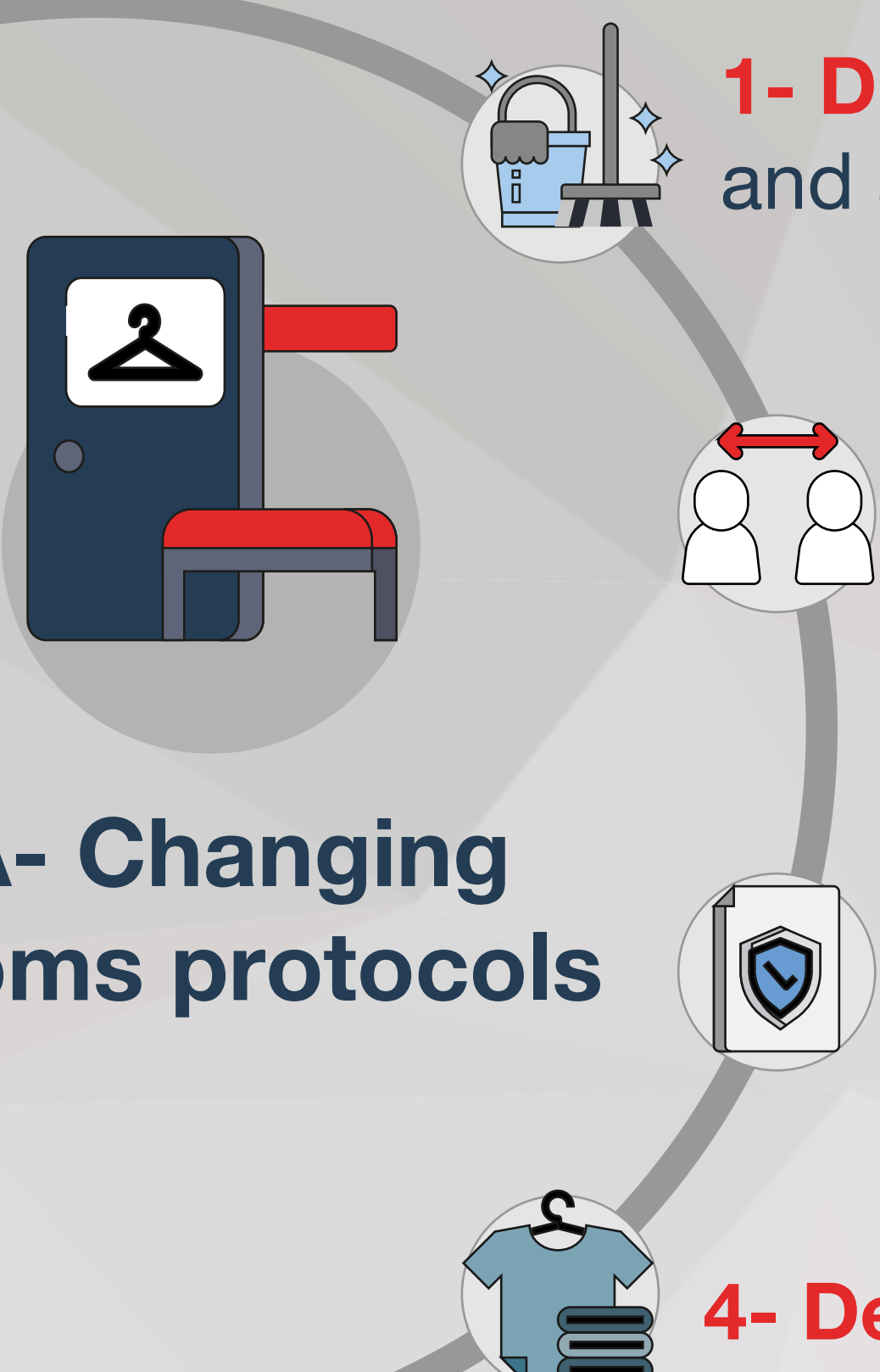


Precautionary and safety measures

to be followed when purchasing goods in order to mitigate the spread of the coronavirus (COVID-19)

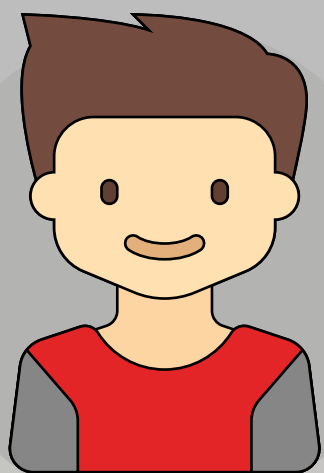
All retail outlets shall abide by the following preventive measures:

Firstly: Allow the reopening of changing rooms at commercial stores as per the following requirements :

- 
- A- Changing rooms protocols**
- 1- Disinfect** changing rooms before and after each use.
 - 2- Ensure** that people queuing in changing rooms maintain at least 2 meters apart.
 - 3- Place** clear social distancing floor marking.
 - 4- Designate** a place for worn clothes.

Precautionary and safety measures

to be followed when purchasing goods in order to mitigate the spread of the coronavirus (COVID-19)



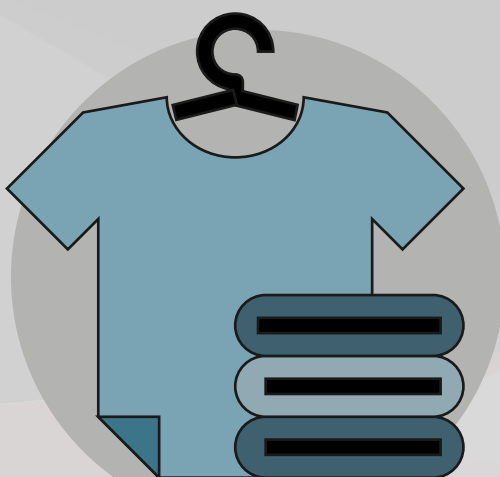
B- Requirements for those using changing rooms



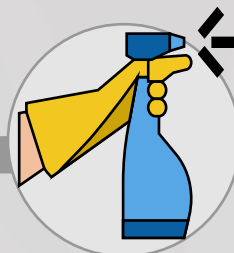
1- Disinfect hands with an alcohol-based sanitizer.



2- Wear a face mask.



C- Clothing requirements



Disinfect worn clothes, or refrain from using them again for 48 hours.

Precautionary and safety measures

to be followed when purchasing goods in order to mitigate the spread of the coronavirus (COVID-19)



Returning and exchanging goods is permitted, subject to the following rules:



Beauty cosmetics and medical masks may not be tried at the store, nor can they be exchanged or returned.



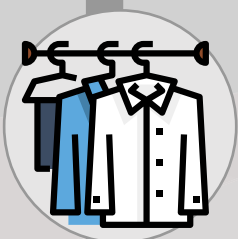
Other goods may be tried and returned, provided they are sterilized by the store's employees before they are displayed again for sale.

Exchanged or returned clothing items must be sterilized using one of the following methods:

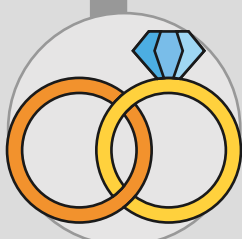
Steamer

Washing clothes
with soap and water

Dry
cleaning



Goods that are difficult to sterilize using one of the approved methods must be isolated in a separate room for (48) hours before they are displayed for sale again.



Eyeglasses, jewelry and other personal items that are placed directly on the human body must be sterilized with a sterilization agent after being touched by the store's visitors or employees.